

Product datasheet

Anti-NBL1 antibody [EPR12397] ab174843

Recombinant RabMAb

4 Images

Overview

Product name	Anti-NBL1 antibody [EPR12397]
Description	Rabbit monoclonal [EPR12397] to NBL1
Host species	Rabbit
Tested applications	Suitable for: Flow Cyt (Intra), ICC/IF, WB Unsuitable for: IHC or IP
Species reactivity	Reacts with: Human Does not react with: Mouse, Rat
Immunogen	Synthetic peptide. This information is proprietary to Abcam and/or its suppliers.
Positive control	A431 and Human prostate lysates; A431 cells.
General notes	This product is a recombinant monoclonal antibody, which offers several advantages including: <ul style="list-style-type: none"> - High batch-to-batch consistency and reproducibility - Improved sensitivity and specificity - Long-term security of supply - Animal-free production For more information see here . Our RabMAb [®] technology is a patented hybridoma-based technology for making rabbit monoclonal antibodies. For details on our patents, please refer to RabMAb[®] patents .

Properties

Form	Liquid
Storage instructions	Shipped at 4°C. Store at +4°C short term (1-2 weeks). Upon delivery aliquot. Store at -20°C long term. Avoid freeze / thaw cycle.
Storage buffer	pH: 7.20 Preservative: 0.01% Sodium azide Constituents: 9% PBS, 40% Glycerol (glycerin, glycerine), 0.05% BSA, 50% Tissue culture supernatant
Purity	Tissue culture supernatant
Clonality	Monoclonal
Clone number	EPR12397

Isotype

IgG

Applications

The Abpromise guarantee

Our **Abpromise guarantee** covers the use of ab174843 in the following tested applications.

The application notes include recommended starting dilutions; optimal dilutions/concentrations should be determined by the end user.

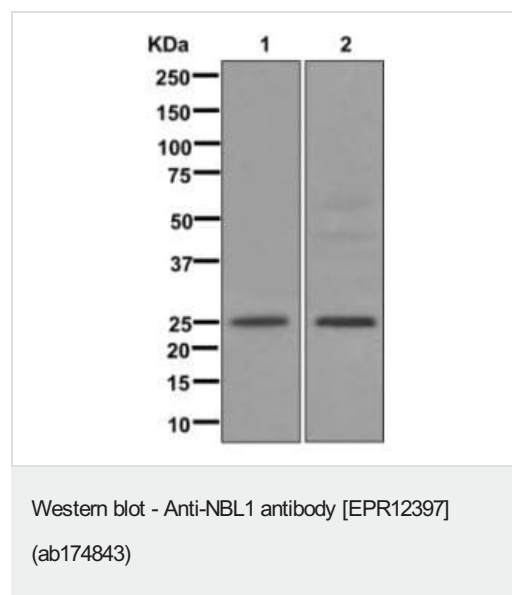
Application	Abreviews	Notes
Flow Cyt (Intra)		1/10 - 1/100. ab172730 - Rabbit monoclonal IgG, is suitable for use as an isotype control with this antibody.
ICC/IF		1/100 - 1/250.
WB		1/1000 - 1/5000. Detects a band of approximately 23 kDa (predicted molecular weight: 19 kDa).

Application notes

Is unsuitable for IHC or IP.

Target

Images



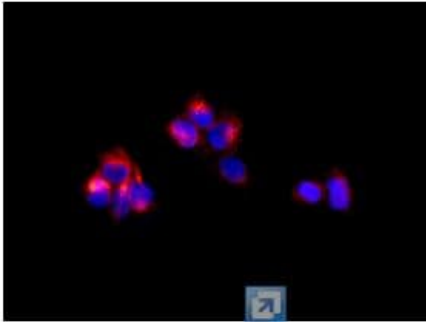
All lanes : Anti-NBL1 antibody [EPR12397] (ab174843) at 1/1000 dilution

Lane 1 : A431 cell lysate

Lane 2 : Human prostate lysate

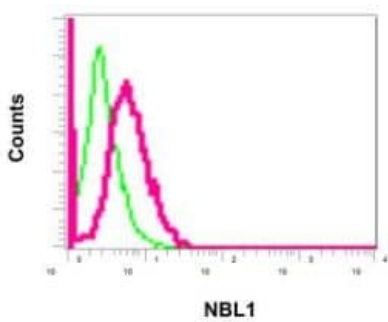
Lysates/proteins at 10 µg per lane.

Predicted band size: 19 kDa



Immunofluorescent analysis of A431 cells labeling NBL1 with ab174843 at 1/100 dilution (red). DAPI nuclear staining (blue).

Immunocytochemistry/ Immunofluorescence - Anti-NBL1 antibody [EPR12397] (ab174843)



Intracellular flow cytometric analysis of permeabilized A431 cells labeling NBL1 with ab174843 at 1/10 dilution (red), or negative control rabbit IgG (green).

Flow Cytometry (Intracellular) - Anti-NBL1 antibody [EPR12397] (ab174843)

Why choose a recombinant antibody?



Research with confidence
Consistent and reproducible results



Long-term and scalable supply
Recombinant technology



Success from the first experiment
Confirmed specificity



Ethical standards compliant
Animal-free production

Anti-NBL1 antibody [EPR12397] (ab174843)

Please note: All products are "FOR RESEARCH USE ONLY. NOT FOR USE IN DIAGNOSTIC PROCEDURES"

Our Abpromise to you: Quality guaranteed and expert technical support

- Replacement or refund for products not performing as stated on the datasheet
- Valid for 12 months from date of delivery
- Response to your inquiry within 24 hours

- We provide support in Chinese, English, French, German, Japanese and Spanish
- Extensive multi-media technical resources to help you
- We investigate all quality concerns to ensure our products perform to the highest standards

If the product does not perform as described on this datasheet, we will offer a refund or replacement. For full details of the Abpromise, please visit <https://www.abcam.com/abpromise> or contact our technical team.

Terms and conditions

- Guarantee only valid for products bought direct from Abcam or one of our authorized distributors