

Product datasheet

Anti-NCAM1 antibody [A24-I] - C-terminal ab179872

[1 Image](#)

Overview

| | |
|----------------------------|---|
| Product name | Anti-NCAM1 antibody [A24-I] - C-terminal |
| Description | Rabbit monoclonal [A24-I] to NCAM1 - C-terminal |
| Host species | Rabbit |
| Tested applications | Suitable for: WB |
| Species reactivity | Reacts with: Human |
| Immunogen | Synthetic peptide corresponding to Human NCAM (C terminal). Database link: P13591 |
| Epitope | Antibody recognizes the epitope located between Glu687 - Ile708 |
| Positive control | Recombinant tagged Human NCAM (aa 611 – 710). |
| General notes | <p>The Life Science industry has been in the grips of a reproducibility crisis for a number of years. Abcam is leading the way in addressing this with our range of recombinant monoclonal antibodies and knockout edited cell lines for gold-standard validation. Please check that this product meets your needs before purchasing.</p> <p>If you have any questions, special requirements or concerns, please send us an inquiry and/or contact our Support team ahead of purchase. Recommended alternatives for this product can be found below, along with publications, customer reviews and Q&As</p> |

Properties

| | |
|-----------------------------|---|
| Form | Liquid |
| Storage instructions | Shipped at 4°C. Store at +4°C short term (1-2 weeks). Upon delivery aliquot. Store at -20°C long term. Avoid freeze / thaw cycle. |
| Storage buffer | pH: 8.00 Preservative: 0.05% Sodium azide Constituents: 0.32% Tris HCl, 1% BSA |
| Purity | Immunogen affinity purified |
| Clonality | Monoclonal |
| Clone number | A24-I |
| Isotype | IgG |

Applications

The Abpromise guarantee

Our **Abpromise guarantee** covers the use of ab179872 in the following tested applications.

The application notes include recommended starting dilutions; optimal dilutions/concentrations should be determined by the end user.

| Application | Abreviews | Notes |
|-------------|-----------|---|
| WB | | 1/1000. Predicted molecular weight: 94 kDa. |

Target

Function

This protein is a cell adhesion molecule involved in neuron-neuron adhesion, neurite fasciculation, outgrowth of neurites, etc.

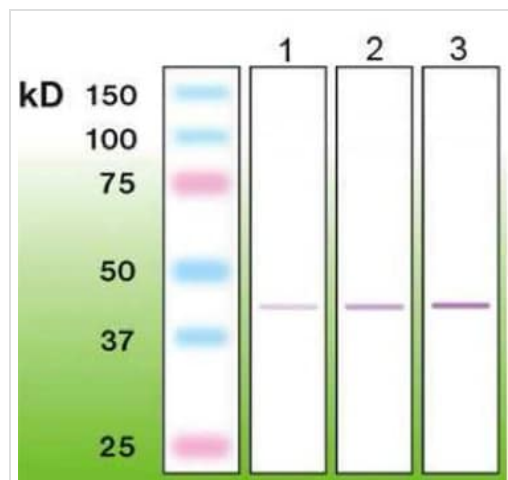
Sequence similarities

Contains 2 fibronectin type-III domains.
Contains 5 Ig-like C2-type (immunoglobulin-like) domains.

Cellular localization

Secreted and Cell membrane.

Images



All lanes : Anti-NCAM1 antibody [A24-I] - C-terminal (ab179872) at 1/1000 dilution

Lane 1 : Recombinant tagged Human NCAM (aa 611 – 710) at 0.1 μ g

Lane 2 : Recombinant tagged Human NCAM (aa 611 – 710) at 0.2 μ g

Lane 3 : Recombinant tagged Human NCAM (aa 611 – 710) at 0.5 μ g

Predicted band size: 94 kDa

Western blot - Anti-NCAM1 antibody [A24-I] - C-terminal (ab179872)

Please note: All products are "FOR RESEARCH USE ONLY. NOT FOR USE IN DIAGNOSTIC PROCEDURES"

Our Abpromise to you: Quality guaranteed and expert technical support

- Replacement or refund for products not performing as stated on the datasheet
- Valid for 12 months from date of delivery
- Response to your inquiry within 24 hours
- We provide support in Chinese, English, French, German, Japanese and Spanish
- Extensive multi-media technical resources to help you

- We investigate all quality concerns to ensure our products perform to the highest standards

If the product does not perform as described on this datasheet, we will offer a refund or replacement. For full details of the Abpromise, please visit <https://www.abcam.com/abpromise> or contact our technical team.

Terms and conditions

- Guarantee only valid for products bought direct from Abcam or one of our authorized distributors