


Anti-NCAPG2 antibody ab70350

★☆☆☆☆ [1 Abreviews](#) [7 References](#) [2 Images](#)

Overview

| | |
|----------------------------|---|
| Product name | Anti-NCAPG2 antibody |
| Description | Rabbit polyclonal to NCAPG2 |
| Host species | Rabbit |
| Tested applications | Suitable for: WB, IP |
| Species reactivity | Reacts with: Human Predicted to work with: Rhesus monkey, Gorilla, Orangutan  |
| Immunogen | Synthetic peptide corresponding to a region between C terminal residues 1100 -1143 of human NCAPG2. (AAH43404.1) |
| Positive control | WB: HeLa whole cell lysate (ab150035) IP: HeLa whole cell extract |
| General notes | <p>The Life Science industry has been in the grips of a reproducibility crisis for a number of years. Abcam is leading the way in addressing this with our range of recombinant monoclonal antibodies and knockout edited cell lines for gold-standard validation. Please check that this product meets your needs before purchasing.</p> <p>If you have any questions, special requirements or concerns, please send us an inquiry and/or contact our Support team ahead of purchase. Recommended alternatives for this product can be found below, along with publications, customer reviews and Q&As</p> |

Properties

| | |
|-----------------------------|---|
| Form | Liquid |
| Storage instructions | Shipped at 4°C. Upon delivery aliquot and store at -20°C. Avoid freeze / thaw cycles. |
| Storage buffer | pH: 6.8 Preservative: 0.09% Sodium azide Constituents: 0.1% BSA, Tris buffered saline |
| Purity | Immunogen affinity purified |
| Clonality | Polyclonal |
| Isotype | IgG |

Applications

The Abpromise guarantee

Our **Abpromise guarantee** covers the use of ab70350 in the following tested applications.

The application notes include recommended starting dilutions; optimal dilutions/concentrations should be determined by the end user.

| Application | Abreviews | Notes |
|-------------|---------------|--|
| WB | ★ ★ ★ ★ ★ (1) | 1/2000 - 1/10000. Detects a band of approximately 131 kDa (predicted molecular weight: 131 kDa). |
| IP | | Use at an assay dependent concentration. |

Target

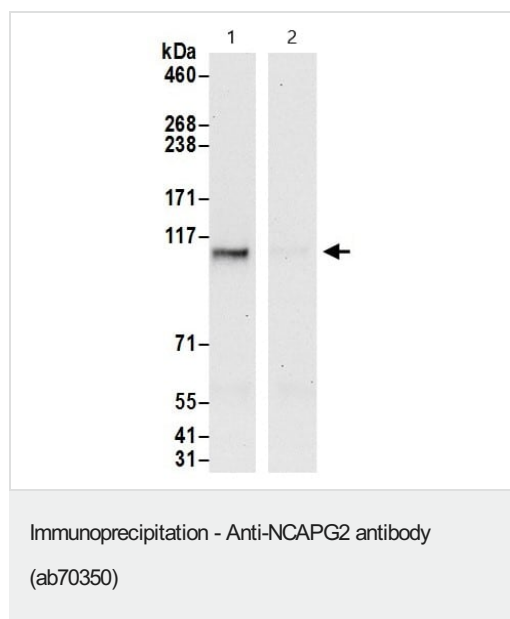
Relevance

NCAPG2 is 1 of 3 non-SMC subunits that define condensin II. Condensin complexes I and II play essential roles in mitotic chromosome assembly and segregation. Both condensins contain 2 invariant structural maintenance of chromosome (SMC) subunits, SMC2 and SMC4, but they contain different sets of non-SMC subunits. NCAPG2 is 1 of 3 non-SMC subunits that defines condensin II.

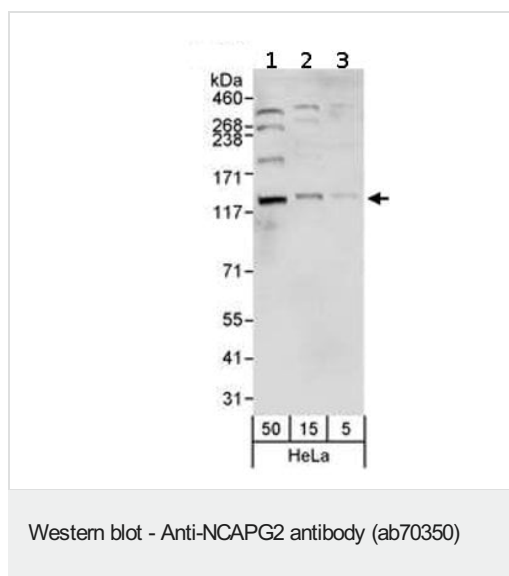
Cellular localization

nucleus

Images



ab70350 immunoprecipitating NCAPG2 at 6 µg per reaction. Lane 1: ab70350 in HeLa whole cell extract (0.5 or 1 mg per IP reaction; 20% of IP loaded). Lane 2: IgG control. For blotting immunoprecipitated NCAPG2, ab70350 was used at 1 µg/mL. Detection: Chemiluminescence with an exposure time of 30 seconds.



All lanes : Anti-NCAPG2 antibody (ab70350) at 0.04 µg/ml

Lane 1 : HeLa whole cell lysate at 50 µg

Lane 2 : HeLa whole cell lysate at 15 µg

Lane 3 : HeLa whole cell lysate at 5 µg

Predicted band size: 131 kDa

Observed band size: 131 kDa

Please note: All products are "FOR RESEARCH USE ONLY. NOT FOR USE IN DIAGNOSTIC PROCEDURES"

Our Abpromise to you: Quality guaranteed and expert technical support

- Replacement or refund for products not performing as stated on the datasheet
- Valid for 12 months from date of delivery
- Response to your inquiry within 24 hours
- We provide support in Chinese, English, French, German, Japanese and Spanish
- Extensive multi-media technical resources to help you
- We investigate all quality concerns to ensure our products perform to the highest standards

If the product does not perform as described on this datasheet, we will offer a refund or replacement. For full details of the Abpromise, please visit <https://www.abcam.com/abpromise> or contact our technical team.

Terms and conditions

- Guarantee only valid for products bought direct from Abcam or one of our authorized distributors