




Product datasheet

Anti-NCF1/p47-phox antibody ab166930

★★★★★ [2 Abreviews](#) [6 References](#) [3 Images](#)

Overview

Product name	Anti-NCF1/p47-phox antibody
Description	Goat polyclonal to NCF1/p47-phox
Host species	Goat
Tested applications	Suitable for: ICC/IF, WB
Species reactivity	Reacts with: Mouse, Human Predicted to work with: Rat, Guinea pig, Cow, Dog, Pig, Chinese hamster 
Immunogen	Synthetic peptide corresponding to Mouse NCF1/p47-phox aa 217-230 (internal sequence) (Cysteine residue). Sequence: DEAEDPDPNYAGEP Database link: NP_035006.3 <div>  Run BLAST with  Run BLAST with </div>
Positive control	WB: Daudi cell lydates ICC/IF: RAW264.7 and NIH3T3 cells
General notes	<p>The Life Science industry has been in the grips of a reproducibility crisis for a number of years. Abcam is leading the way in addressing this with our range of recombinant monoclonal antibodies and knockout edited cell lines for gold-standard validation. Please check that this product meets your needs before purchasing.</p> <p>If you have any questions, special requirements or concerns, please send us an inquiry and/or contact our Support team ahead of purchase. Recommended alternatives for this product can be found below, along with publications, customer reviews and Q&As</p>

Properties

Form	Liquid
Storage instructions	Shipped at 4°C. Upon delivery aliquot and store at -20°C. Avoid freeze / thaw cycles.
Storage buffer	pH: 7.30 Preservative: 0.02% Sodium azide Constituents: 99% Tris buffered saline, 0.5% BSA
Purity	Immunogen affinity purified
Purification notes	ab166930 was purified from goat serum by ammonium sulphate precipitation followed by antigen

	affinity chromatography using the immunizing peptide.
Clonality	Polyclonal
Isotype	IgG

Applications

The Abpromise guarantee Our **Abpromise guarantee** covers the use of ab166930 in the following tested applications. The application notes include recommended starting dilutions; optimal dilutions/concentrations should be determined by the end user.

Application	Abreviews	Notes
ICC/IF		Use a concentration of 10 µg/ml.
WB	★★★★★ (2)	Use a concentration of 0.03 - 0.1 µg/ml. Predicted molecular weight: 45 kDa. 1 hour primary incubation is recommended for this product.

Target

Function	NCF2, NCF1, and a membrane bound cytochrome b558 are required for activation of the latent NADPH oxidase (necessary for superoxide production).
Involvement in disease	Defects in NCF1 are the cause of chronic granulomatous disease autosomal recessive cytochrome-b-positive type 1 (CGD1) [MIM:233700]. Chronic granulomatous disease is a genetically heterogeneous disorder characterized by the inability of neutrophils and phagocytes to kill microbes that they have ingested. Patients suffer from life-threatening bacterial/fungal infections.
Sequence similarities	Contains 1 PX (phox homology) domain. Contains 2 SH3 domains.
Cellular localization	Cytoplasm.

Images

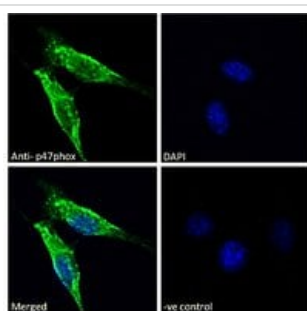


Western blot - Anti-NCF1/p47-phox antibody
(ab166930)

Anti-NCF1/p47-phox antibody (ab166930) at 1 µg/ml + Daudi cell lysate (in RIPA buffer) at 35 µg

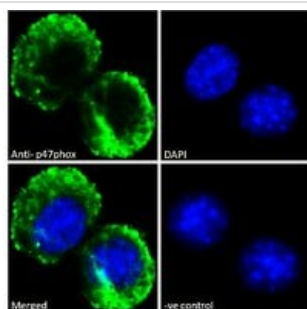
Predicted band size: 45 kDa

Detected by chemiluminescence.



Immunocytochemistry/ Immunofluorescence - Anti-NCF1/p47-phox antibody (ab166930)

Immunocytochemistry/ Immunofluorescence analysis of NIH3T3 cells labeling NCF1/p47-phox ab166930 at 10ug/mL (1hr). Cells were fixed with paraformaldehyde and permeabilized with 0.15% Triton. An Alexa Fluor 488 conjugated antibody at 2ug/mL was used as the secondary antibody. The images is showing cytoplasmic and plasma membrane staining. The nuclear stain is DAPI (blue). Negative control: Unimmunized goat IgG (10ug/ml) followed by Alexa Fluor 488 secondary antibody (2ug/mL).



Immunocytochemistry/ Immunofluorescence - Anti-NCF1/p47-phox antibody (ab166930)

Immunocytochemistry/ Immunofluorescence analysis of RAW264.7 cells labeling NCF1/p47-phox ab166930 at 10ug/mL (1hr). Cells were fixed with paraformaldehyde and permeabilized with 0.15% Triton. An Alexa Fluor 488 conjugated antibody at 2ug/mL was used as the secondary antibody. The images is showing cytoplasmic and plasma membrane staining. The nuclear stain is DAPI (blue). Negative control: Unimmunized goat IgG (10ug/ml) followed by Alexa Fluor 488 secondary antibody (2ug/mL).

Please note: All products are "FOR RESEARCH USE ONLY. NOT FOR USE IN DIAGNOSTIC PROCEDURES"

Our Abpromise to you: Quality guaranteed and expert technical support

- Replacement or refund for products not performing as stated on the datasheet
- Valid for 12 months from date of delivery
- Response to your inquiry within 24 hours

- We provide support in Chinese, English, French, German, Japanese and Spanish
- Extensive multi-media technical resources to help you
- We investigate all quality concerns to ensure our products perform to the highest standards

If the product does not perform as described on this datasheet, we will offer a refund or replacement. For full details of the Abpromise, please visit <https://www.abcam.com/abpromise> or contact our technical team.

Terms and conditions

- Guarantee only valid for products bought direct from Abcam or one of our authorized distributors