

Product datasheet

Anti-NDUFA10 antibody [EPR12135] ab174829

Recombinant **RabMAb**

[3 References](#) [6 Images](#)

Overview

Product name	Anti-NDUFA10 antibody [EPR12135]
Description	Rabbit monoclonal [EPR12135] to NDUFA10
Host species	Rabbit
Tested applications	Suitable for: WB, ICC/IF, IP, IHC-P Unsuitable for: Flow Cyt
Species reactivity	Reacts with: Human
Immunogen	Synthetic peptide. This information is proprietary to Abcam and/or its suppliers.
Positive control	HepG2, HeLa, Jurkat, Raji and Human fetal heart lysates; Human heart and kidney tissues; HeLa cells.
General notes	<p>This product is a recombinant monoclonal antibody, which offers several advantages including:</p> <ul style="list-style-type: none"> - High batch-to-batch consistency and reproducibility - Improved sensitivity and specificity - Long-term security of supply - Animal-free production <p>For more information see here.</p> <p>Our RabMAb[®] technology is a patented hybridoma-based technology for making rabbit monoclonal antibodies. For details on our patents, please refer to RabMAb[®] patents.</p> <p>Mouse, Rat: We have preliminary internal testing data to indicate this antibody may not react with these species. Please contact us for more information.</p>

Properties

Form	Liquid
Storage instructions	Shipped at 4°C. Store at +4°C short term (1-2 weeks). Upon delivery aliquot. Store at -20°C. Avoid freeze / thaw cycle.
Storage buffer	<p>pH: 7.20</p> <p>Preservative: 0.01% Sodium azide</p> <p>Constituents: 9% PBS, 40% Glycerol (glycerin, glycerine), 0.05% BSA, 50% Tissue culture supernatant</p>
Purity	Tissue culture supernatant

Clonality	Monoclonal
Clone number	EPR12135
Isotype	IgG

Applications

The Abpromise guarantee Our **Abpromise guarantee** covers the use of ab174829 in the following tested applications.

The application notes include recommended starting dilutions; optimal dilutions/concentrations should be determined by the end user.

Application	Abreviews	Notes
WB		1/1000 - 1/5000. Detects a band of approximately 37 kDa (predicted molecular weight: 41 kDa).
ICC/IF		1/50 - 1/100.
IP		1/10 - 1/100.
IHC-P		1/50 - 1/100. Perform heat mediated antigen retrieval with citrate buffer pH 6 before commencing with IHC staining protocol.

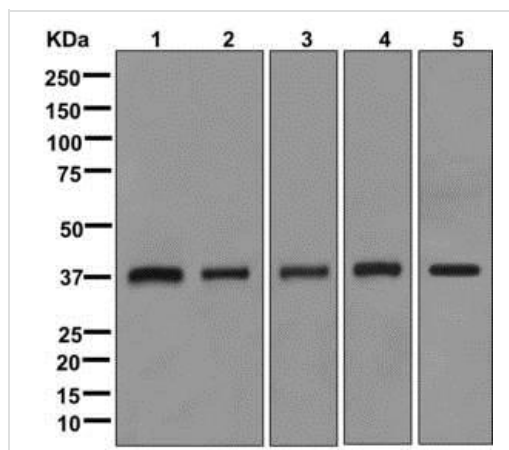
Application notes Is unsuitable for Flow Cyt.

Target

Relevance NDUFA10 protein belongs to the complex I 42kDa subunit family. Mammalian complex I is the first enzyme complex in the electron transport chain of mitochondria. It is composed of 45 different subunits. This protein is a component of the hydrophobic protein fraction and has NADH dehydrogenase activity and oxidoreductase activity. It transfers electrons from NADH to the respiratory chain.

Cellular localization Mitochondrion matrix.

Images



Western blot - Anti-NDUFA10 antibody [EPR12135] (ab174829)

All lanes : Anti-NDUFA10 antibody [EPR12135] (ab174829) at 1/1000 dilution

Lane 1 : HepG2 cell lysate

Lane 2 : HeLa cell lysate

Lane 3 : Jurkat cell lysate

Lane 4 : Raji cell lysate

Lane 5 : Human fetal heart tissue lysate

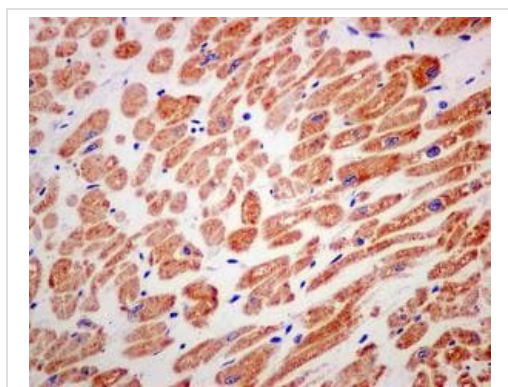
Lysates/proteins at 10 µg per lane.

Secondary

All lanes : Goat anti-rabbit HRP-conjugated at 1/2000 dilution

Developed using the ECL technique.

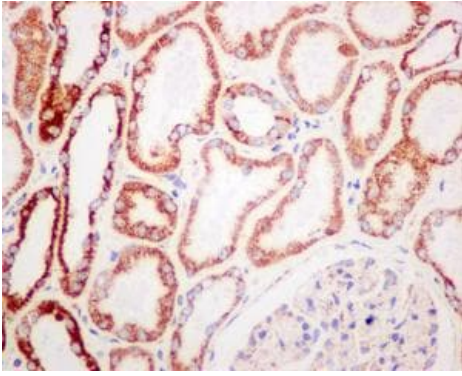
Predicted band size: 41 kDa



Immunohistochemistry (Formalin/PFA-fixed paraffin-embedded sections) - Anti-NDUFA10 antibody [EPR12135] (ab174829)

Immunohistochemical analysis of formalin-fixed, paraffin-embedded Human heart tissue, labeling NDUFA10 with ab174829 at 1/50 dilution.

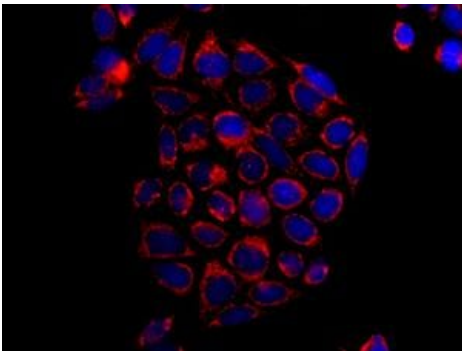
Perform heat mediated antigen retrieval with citrate buffer pH 6 before commencing with IHC staining protocol.



Immunohistochemistry (Formalin/PFA-fixed paraffin-embedded sections) - Anti-NDUF A10 antibody [EPR12135] (ab174829)

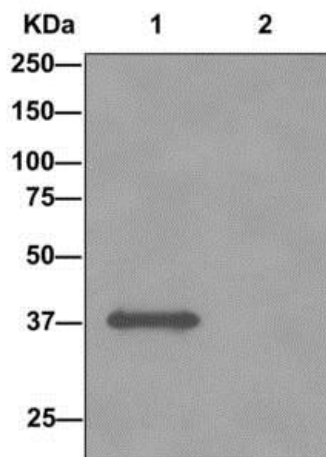
Immunohistochemical analysis of formalin-fixed, paraffin-embedded Human kidney tissue, labeling NDUF A10 with ab174829 at 1/50 dilution.

Perform heat mediated antigen retrieval with citrate buffer pH 6 before commencing with IHC staining protocol.



Immunocytochemistry/ Immunofluorescence - Anti-NDUF A10 antibody [EPR12135] (ab174829)

Immunofluorescent analysis of HeLa cells, labeling NDUF A10 with ab174829 at 1/50 dilution (red). DAPI nuclear staining (blue).



Immunoprecipitation - Anti-NDUF A10 antibody [EPR12135] (ab174829)

Western blot analysis on Immunoprecipitation pellet from either 1) Human fetal heart lysate, or 2) 1x PBS (negative control); labeling NDUF A10, immunoprecipitated using ab174829 at 1/10 dilution and HRP-conjugated anti-rabbit IgG preferentially detecting the non-reduced form of rabbit IgG.

Why choose a recombinant antibody?



Research with confidence
Consistent and reproducible results



Long-term and scalable supply
Recombinant technology



Success from the first experiment
Confirmed specificity



Ethical standards compliant
Animal-free production

Anti-NDUFA10 antibody [EPR12135] (ab174829)

Please note: All products are "FOR RESEARCH USE ONLY. NOT FOR USE IN DIAGNOSTIC PROCEDURES"

Our Abpromise to you: Quality guaranteed and expert technical support

- Replacement or refund for products not performing as stated on the datasheet
- Valid for 12 months from date of delivery
- Response to your inquiry within 24 hours
- We provide support in Chinese, English, French, German, Japanese and Spanish
- Extensive multi-media technical resources to help you
- We investigate all quality concerns to ensure our products perform to the highest standards

If the product does not perform as described on this datasheet, we will offer a refund or replacement. For full details of the Abpromise, please visit <https://www.abcam.com/abpromise> or contact our technical team.

Terms and conditions

- Guarantee only valid for products bought direct from Abcam or one of our authorized distributors