


Product datasheet

Anti-NDUFS8 antibody [EPR11893] - C-terminal ab180183

Recombinant RabMAb

[3 References](#) [6 Images](#)

Overview

Product name	Anti-NDUFS8 antibody [EPR11893] - C-terminal
Description	Rabbit monoclonal [EPR11893] to NDUFS8 - C-terminal
Host species	Rabbit
Tested applications	Suitable for: Flow Cyt (Intra), WB, IHC-P Unsuitable for: ICC/IF or IP
Species reactivity	Reacts with: Human Predicted to work with: Mouse, Rat 
Immunogen	Synthetic peptide. This information is proprietary to Abcam and/or its suppliers.
Positive control	Fetal heart, HepG2, Jurkat and HeLa lysates; Human endometrial carcinoma, Human heart and Human kidney tissues; HeLa cells.
General notes	<p>This product is a recombinant monoclonal antibody, which offers several advantages including:</p> <ul style="list-style-type: none"> - High batch-to-batch consistency and reproducibility - Improved sensitivity and specificity - Long-term security of supply - Animal-free production <p>For more information see here.</p> <p>Our RabMAb[®] technology is a patented hybridoma-based technology for making rabbit monoclonal antibodies. For details on our patents, please refer to RabMAb[®] patents.</p>

Properties

Form	Liquid
Storage instructions	Shipped at 4°C. Store at +4°C short term (1-2 weeks). Upon delivery aliquot. Store at -20°C long term. Avoid freeze / thaw cycle.
Storage buffer	pH: 7.20 Preservative: 0.01% Sodium azide Constituents: 9% PBS, 40% Glycerol (glycerin, glycerine), 0.05% BSA, 50% Tissue culture supernatant

Purity	Tissue culture supernatant
Clonality	Monoclonal
Clone number	EPR11893
Isotype	IgG

Applications

The Abpromise guarantee Our **Abpromise guarantee** covers the use of ab180183 in the following tested applications.

The application notes include recommended starting dilutions; optimal dilutions/concentrations should be determined by the end user.

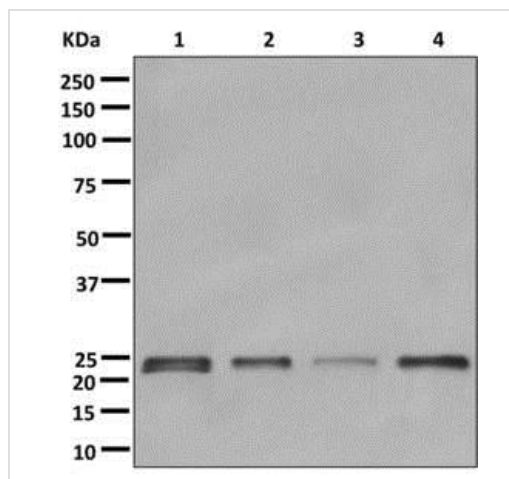
Application	Abreviews	Notes
Flow Cyt (Intra)		1/10 - 1/100. ab172730 - Rabbit monoclonal IgG, is suitable for use as an isotype control with this antibody.
WB		1/1000 - 1/5000. Predicted molecular weight: 23 kDa.
IHC-P		1/50 - 1/100. Perform heat mediated antigen retrieval before commencing with IHC staining protocol.

Application notes Is unsuitable for ICC/IF or IP.

Target

Function	Core subunit of the mitochondrial membrane respiratory chain NADH dehydrogenase (Complex I) that is believed to belong to the minimal assembly required for catalysis. Complex I functions in the transfer of electrons from NADH to the respiratory chain. The immediate electron acceptor for the enzyme is believed to be ubiquinone (By similarity). May donate electrons to ubiquinone.
Involvement in disease	Defects in NDUFS8 are a cause of Leigh syndrome (LS) [MIM:256000]. LS is a severe neurological disorder characterized by bilaterally symmetrical necrotic lesions in subcortical brain regions.
Sequence similarities	Belongs to the complex I 23 kDa subunit family. Contains 2 4Fe-4S ferredoxin-type domains.
Cellular localization	Mitochondrion.

Images



Western blot - Anti-NDUF8 antibody [EPR11893] - C-terminal (ab180183)

All lanes : Anti-NDUF8 antibody [EPR11893] - C-terminal (ab180183) at 1/1000 dilution

Lane 1 : Fetal heart tissue lysate

Lane 2 : HepG2 cell lysate

Lane 3 : Jurkat cell lysate

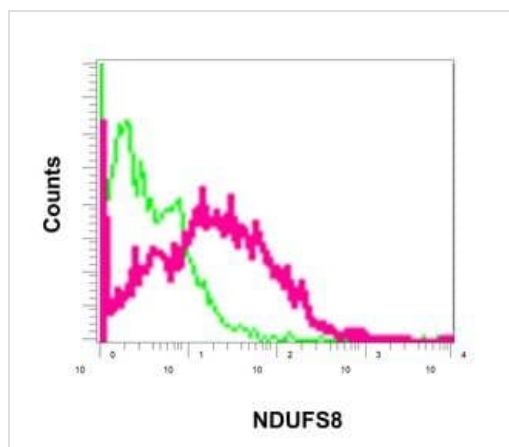
Lane 4 : HeLa cell lysate

Lysates/proteins at 10 µg per lane.

Secondary

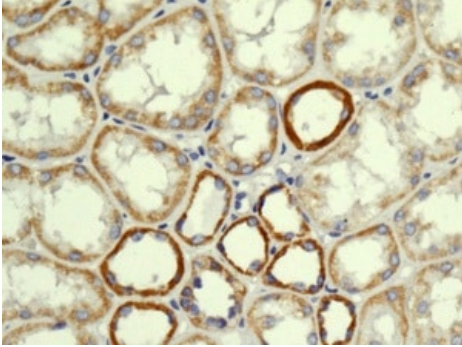
All lanes : HRP labelled goat anti-rabbit at 1/2000 dilution

Predicted band size: 23 kDa



Flow Cytometry (Intracellular) - Anti-NDUF8 antibody [EPR11893] - C-terminal (ab180183)

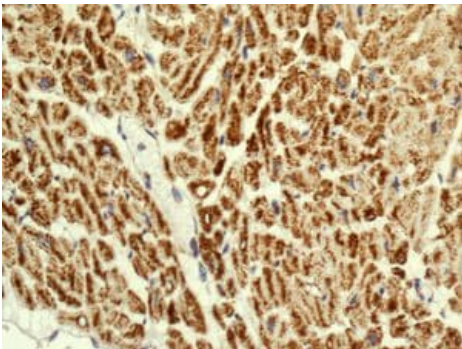
Intracellular flow cytometrical analysis of permeabilized HeLa cells labeling NDUF8 with ab180183 at 1/10 (red) or a rabbit IgG negative (green).



Immunohistochemistry (Formalin/PFA-fixed paraffin-embedded sections) - Anti-NDUF58 antibody [EPR11893] - C-terminal (ab180183)

Immunohistochemical analysis of paraffin embedded Human kidney tissue labeling NDUF58 with ab180183 at 1/50.

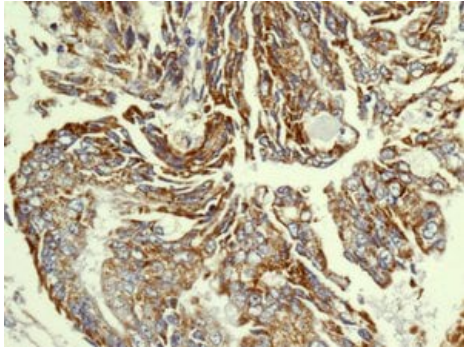
Perform heat mediated antigen retrieval before commencing with IHC staining protocol.



Immunohistochemistry (Formalin/PFA-fixed paraffin-embedded sections) - Anti-NDUF58 antibody [EPR11893] - C-terminal (ab180183)

Immunohistochemical analysis of paraffin embedded Human heart tissue labeling NDUF58 with ab180183 at 1/50.

Perform heat mediated antigen retrieval before commencing with IHC staining protocol.

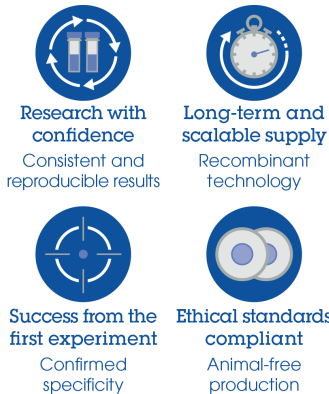


Immunohistochemical analysis of paraffin embedded Human endometrial carcinoma tissue labeling NDUFS8 with ab180183 at 1/50.

Perform heat mediated antigen retrieval before commencing with IHC staining protocol.

Immunohistochemistry (Formalin/PFA-fixed paraffin-embedded sections) - Anti-NDUFS8 antibody [EPR11893] - C-terminal (ab180183)

Why choose a recombinant antibody?



Anti-NDUFS8 antibody [EPR11893] - C-terminal (ab180183)

Please note: All products are "FOR RESEARCH USE ONLY. NOT FOR USE IN DIAGNOSTIC PROCEDURES"

Our Abpromise to you: Quality guaranteed and expert technical support

- Replacement or refund for products not performing as stated on the datasheet
- Valid for 12 months from date of delivery
- Response to your inquiry within 24 hours
- We provide support in Chinese, English, French, German, Japanese and Spanish
- Extensive multi-media technical resources to help you
- We investigate all quality concerns to ensure our products perform to the highest standards

If the product does not perform as described on this datasheet, we will offer a refund or replacement. For full details of the Abpromise, please visit <https://www.abcam.com/abpromise> or contact our technical team.

Terms and conditions

- Guarantee only valid for products bought direct from Abcam or one of our authorized distributors