

Product datasheet

Anti-NEK6 antibody [EPR5282] α b109177


KO VALIDATED

Recombinant

RabMAb

[1 References](#) [3 Images](#)

Overview

| | |
|---------------------|--|
| Product name | Anti-NEK6 antibody [EPR5282] |
| Description | Rabbit monoclonal [EPR5282] to NEK6 |
| Host species | Rabbit |
| Tested applications | Suitable for: WB Unsuitable for: Flow Cyt, ICC/IF, IHC-P or IP |
| Species reactivity | Reacts with: Human Predicted to work with: Rat  |
| Immunogen | Synthetic peptide. This information is proprietary to Abcam and/or its suppliers. |
| Positive control | WB: HepG2, HeLa, 293T and HT-1080 cell lysates |
| General notes | <p>This product is a recombinant monoclonal antibody, which offers several advantages including:</p> <ul style="list-style-type: none"> - High batch-to-batch consistency and reproducibility - Improved sensitivity and specificity - Long-term security of supply - Animal-free production <p>For more information see here.</p> <p>Our RabMAb[®] technology is a patented hybridoma-based technology for making rabbit monoclonal antibodies. For details on our patents, please refer to RabMAb[®] patents.</p> <p>Mouse: We have preliminary internal testing data to indicate this antibody may not react with this species. Please contact us for more information.</p> |

Properties

| | |
|----------------------|--|
| Form | Liquid |
| Storage instructions | Shipped at 4°C. Store at -20°C. Stable for 12 months at -20°C. |
| Storage buffer | pH: 7.20 Preservative: 0.05% Sodium azide Constituents: 0.1% BSA, 40% Glycerol (glycerin, glycerine), 9.85% Tris glycine, 50% Tissue culture supernatant |
| Purity | Protein A purified |

| | |
|---------------------|------------|
| Clonality | Monoclonal |
| Clone number | EPR5282 |
| Isotype | IgG |

Applications

The Abpromise guarantee Our **Abpromise guarantee** covers the use of ab109177 in the following tested applications. The application notes include recommended starting dilutions; optimal dilutions/concentrations should be determined by the end user.

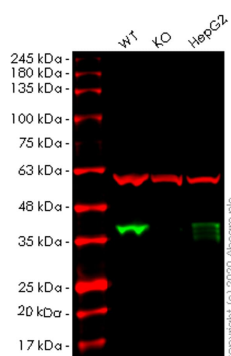
| Application | Abreviews | Notes |
|-------------|-----------|---|
| WB | | 1/1000 - 1/10000. Predicted molecular weight: 36 kDa. |

Application notes Is unsuitable for Flow Cyt, ICC/IF, IHC-P or IP.

Target

| | |
|---|---|
| Function | Activated during M phase. Required for chromosome segregation at metaphase-anaphase transition and therefore for mitotic progression. Inhibition of activity results in apoptosis. Phosphorylates KIF11 to promote mitotic spindle formation. |
| Tissue specificity | Ubiquitous, with highest expression in heart and skeletal muscle. |
| Sequence similarities | Belongs to the protein kinase superfamily. NEK Ser/Thr protein kinase family. NIMA subfamily. Contains 1 protein kinase domain. |
| Post-translational modifications | Autophosphorylated. |
| Cellular localization | Cytoplasm. Nucleus. |

Images



Western blot - Anti-NEK6 antibody [EPR5282] (ab109177)

All lanes : Anti-NEK6 antibody [EPR5282] (ab109177) at 1/1000 dilution

Lane 1 : Wild-type HeLa cell lysate

Lane 2 : NEK6 knockout HeLa cell lysate

Lane 3 : HepG2 cell lysate

Lysates/proteins at 20 µg per lane.

Secondary

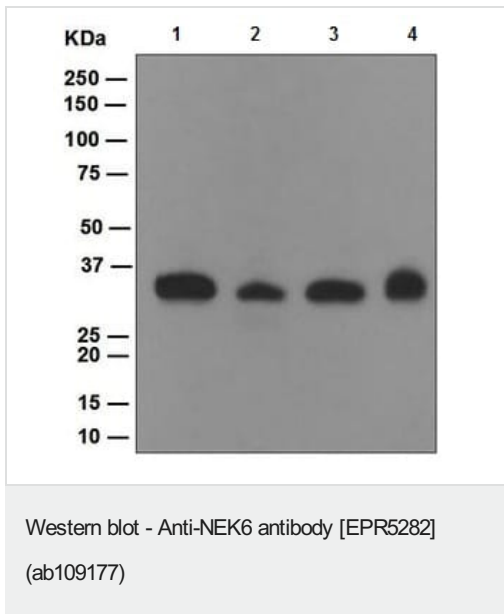
All lanes : Goat anti-Rabbit IgG H&L (IRDye® 800CW) preadsorbed (**ab216773**) at 1/10000 dilution

Predicted band size: 36 kDa

Observed band size: 36 kDa

Lanes 1-3: Merged signal (red and green). Green - ab109177 observed at 36 kDa. Red - loading control **ab7291** observed at 50 kDa.

ab109177 Anti-NEK6 antibody [EPR5282] was shown to specifically react with NEK6 in wild-type HeLa cells. Loss of signal was observed when knockout cell line **ab265910** (knockout cell lysate **ab258072**) was used. Wild-type and NEK6 knockout samples were subjected to SDS-PAGE. ab109177 and Anti-alpha Tubulin antibody [DM1A] - Loading Control (**ab7291**) were incubated overnight at 4°C at 1 in 1000 dilution and 1 in 20000 dilution respectively. Blots were developed with Goat anti-Rabbit IgG H&L (IRDye® 800CW) preadsorbed (**ab216773**) and Goat anti-Mouse IgG H&L (IRDye® 680RD) preadsorbed (**ab216776**) secondary antibodies at 1 in 20000 dilution for 1 hour at room temperature before imaging.



All lanes : Anti-NEK6 antibody [EPR5282] (ab109177) at 1/1000 dilution

Lane 1 : HepG2 lysate

Lane 2 : HeLa cell lysate

Lane 3 : 293T cell lysate

Lane 4 : HT-1080 cell lysate

Lysates/proteins at 10 µg per lane.

Predicted band size: 36 kDa

Why choose a recombinant antibody?



Research with confidence
Consistent and reproducible results



Long-term and scalable supply
Recombinant technology



Success from the first experiment
Confirmed specificity



Ethical standards compliant
Animal-free production

Anti-NEK6 antibody [EPR5282] (ab109177)

Please note: All products are "FOR RESEARCH USE ONLY. NOT FOR USE IN DIAGNOSTIC PROCEDURES"

Our Abpromise to you: Quality guaranteed and expert technical support

- Replacement or refund for products not performing as stated on the datasheet
- Valid for 12 months from date of delivery
- Response to your inquiry within 24 hours
- We provide support in Chinese, English, French, German, Japanese and Spanish
- Extensive multi-media technical resources to help you
- We investigate all quality concerns to ensure our products perform to the highest standards

If the product does not perform as described on this datasheet, we will offer a refund or replacement. For full details of the Abpromise, please visit <https://www.abcam.com/abpromise> or contact our technical team.

Terms and conditions

- Guarantee only valid for products bought direct from Abcam or one of our authorized distributors