


Product datasheet

Anti-NELF-B antibody [EPR11200] ab167401

Recombinant RabMAb

★★★★★ [1 Abreviews](#) [6 References](#) [7 Images](#)

Overview

Product name	Anti-NELF-B antibody [EPR11200]
Description	Rabbit monoclonal [EPR11200] to NELF-B
Host species	Rabbit
Tested applications	Suitable for: WB, ICC/IF, IHC-P Unsuitable for: Flow Cyt or IP
Species reactivity	Reacts with: Human Predicted to work with: Mouse, Rat 
Immunogen	Recombinant fragment within Human NELF-B. The exact sequence is proprietary. Database link: Q8WX92
Positive control	T47D, HeLa, BxPC-3 and HepG2 whole cell lysate (ab7900); Human colon and Human uterus tissues; BxPC-3 cells.
General notes	This product is a recombinant monoclonal antibody, which offers several advantages including: <ul style="list-style-type: none"> - High batch-to-batch consistency and reproducibility - Improved sensitivity and specificity - Long-term security of supply - Animal-free production For more information see here . Our RabMAb [®] technology is a patented hybridoma-based technology for making rabbit monoclonal antibodies. For details on our patents, please refer to RabMAb[®] patents .

Properties

Form	Liquid
Storage instructions	Shipped at 4°C. Store at +4°C short term (1-2 weeks). Upon delivery aliquot. Store at -20°C long term.
Storage buffer	pH: 7.2 Preservative: 0.01% Sodium azide Constituents: 9% PBS, 40% Glycerol (glycerin, glycerine), 0.05% BSA, 50% Tissue culture supernatant
Purity	Tissue culture supernatant

Clonality	Monoclonal
Clone number	EPR11200
Isotype	IgG

Applications

The Abpromise guarantee Our **Abpromise guarantee** covers the use of ab167401 in the following tested applications. The application notes include recommended starting dilutions; optimal dilutions/concentrations should be determined by the end user.

Application	Abreviews	Notes
WB		1/1000 - 1/10000. Predicted molecular weight: 66 kDa.
ICC/IF	★★★★★ (1)	1/100 - 1/250.
IHC-P		1/100 - 1/250. Perform heat mediated antigen retrieval with citrate buffer pH 6 before commencing with IHC staining protocol.

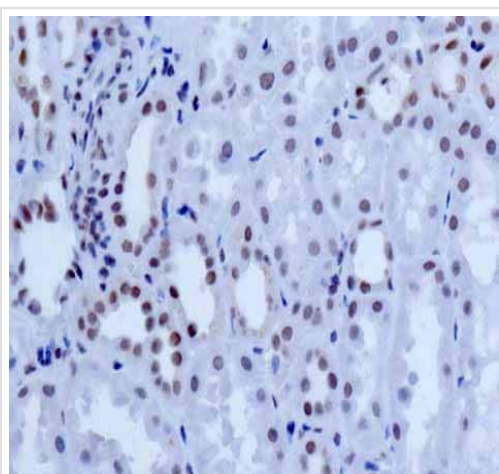
Application notes Is unsuitable for Flow Cyt or IP.

Target

Relevance NELF-B is an essential component of the NELF complex, a complex that negatively regulates the elongation of transcription by RNA polymerase II. The NELF complex causes transcriptional pausing and is counteracted by the P-TEFb kinase complex. It may be able to induce chromatin unfolding.

Cellular localization Nuclear

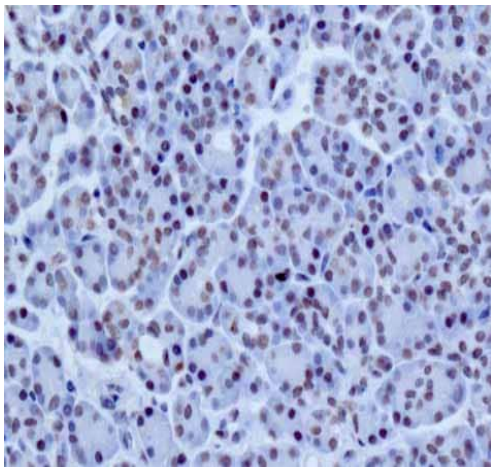
Images



Formalin-fixed, paraffin-embedded human kidney tissue stained for NELF-B with ab167401 (1/100 dilution) in immunohistochemical analysis.

Perform heat mediated antigen retrieval with citrate buffer pH 6 before commencing with IHC staining protocol.

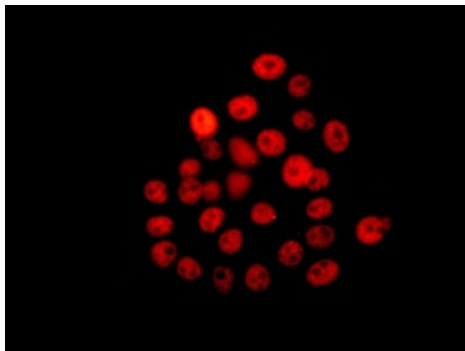
Immunohistochemistry (Formalin/PFA-fixed paraffin-embedded sections) - Anti-NELF-B antibody [EPR11200] (ab167401)



Immunohistochemistry (Formalin/PFA-fixed paraffin-embedded sections) - Anti-NELF-B antibody [EPR11200] (ab167401)

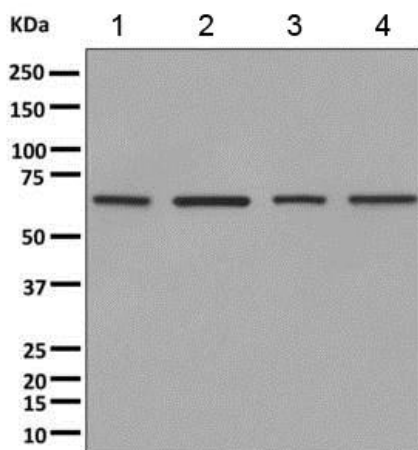
Formalin-fixed, paraffin-embedded human pancreas tissue stained for NELF-B with ab167401 (1/100 dilution) in immunohistochemical analysis.

Perform heat mediated antigen retrieval with citrate buffer pH 6 before commencing with IHC staining protocol.



Immunocytochemistry/ Immunofluorescence - Anti-NELF-B antibody [EPR11200] (ab167401)

Immunofluorescent analysis of BxPC-3 cells labeling NELF-B with ab167401 at 1/100 dilution.



Western blot - Anti-NELF-B antibody [EPR11200] (ab167401)

All lanes : Anti-NELF-B antibody [EPR11200] (ab167401) at 1/1000 dilution

Lane 1 : T47D cell lysate

Lane 2 : HeLa cell lysate

Lane 3 : BxPC-3 cell lysate

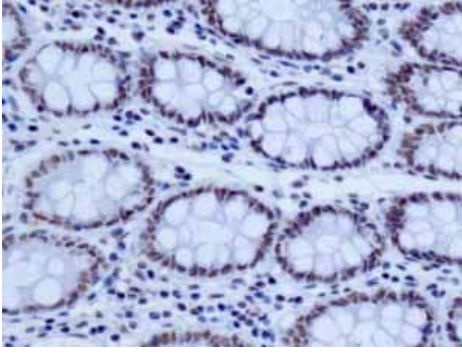
Lane 4 : HepG2 cell lysate

Lysates/proteins at 10 µg per lane.

Secondary

All lanes : Goat anti-rabbit HRP at 1/2000 dilution

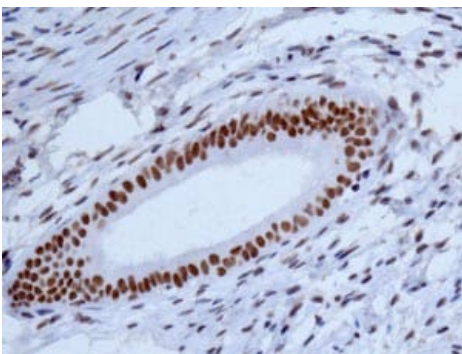
Predicted band size: 66 kDa



Immunohistochemistry (Formalin/PFA-fixed paraffin-embedded sections) - Anti-NELF-B antibody [EPR11200] (ab167401)

Formalin-fixed, paraffin-embedded human colon tissue stained for NELF-B with ab167401 (1/100 dilution) in immunohistochemical analysis.

Perform heat mediated antigen retrieval with citrate buffer pH 6 before commencing with IHC staining protocol.

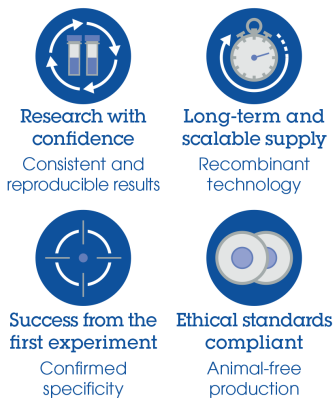


Immunohistochemistry (Formalin/PFA-fixed paraffin-embedded sections) - Anti-NELF-B antibody [EPR11200] (ab167401)

Formalin-fixed, paraffin-embedded human uterus tissue stained for NELF-B with ab167401 (1/100 dilution) in immunohistochemical analysis.

Perform heat mediated antigen retrieval with citrate buffer pH 6 before commencing with IHC staining protocol.

Why choose a recombinant antibody?



Anti-NELF-B antibody [EPR11200] (ab167401)

Please note: All products are "FOR RESEARCH USE ONLY. NOT FOR USE IN DIAGNOSTIC PROCEDURES"

Our Abpromise to you: Quality guaranteed and expert technical support

- Replacement or refund for products not performing as stated on the datasheet
- Valid for 12 months from date of delivery
- Response to your inquiry within 24 hours

- We provide support in Chinese, English, French, German, Japanese and Spanish
- Extensive multi-media technical resources to help you
- We investigate all quality concerns to ensure our products perform to the highest standards

If the product does not perform as described on this datasheet, we will offer a refund or replacement. For full details of the Abpromise, please visit <https://www.abcam.com/abpromise> or contact our technical team.

Terms and conditions

- Guarantee only valid for products bought direct from Abcam or one of our authorized distributors