

Anti-Nephrin antibody ab92887

[1 Image](#)

Overview

| | |
|----------------------------|---|
| Product name | Anti-Nephrin antibody |
| Description | Rabbit polyclonal to Nephrin |
| Host species | Rabbit |
| Tested applications | Suitable for: IHC-P |
| Species reactivity | Reacts with: Human |
| Immunogen | Synthetic peptide within Human Nephrin aa 750-850 (internal sequence). The exact sequence is proprietary. Database link: O60500 |
| Positive control | Human kidney tissue |
| General notes | <p>This product is FOR RESEARCH USE ONLY. For commercial use, please contact partnerships@abcam.com.</p> <p>The Life Science industry has been in the grips of a reproducibility crisis for a number of years. Abcam is leading the way in addressing this with our range of recombinant monoclonal antibodies and knockout edited cell lines for gold-standard validation. Please check that this product meets your needs before purchasing.</p> <p>If you have any questions, special requirements or concerns, please send us an inquiry and/or contact our Support team ahead of purchase. Recommended alternatives for this product can be found below, along with publications, customer reviews and Q&As</p> |

Properties

| | |
|-----------------------------|--|
| Form | Liquid |
| Storage instructions | Shipped at 4°C. Store at +4°C. |
| Storage buffer | pH: 7.60 Preservative: 0.1% Sodium azide Constituents: PBS, 1% BSA |
| Purity | Immunogen affinity purified |
| Clonality | Polyclonal |
| Isotype | IgG |

Applications

The Abpromise guarantee

Our **Abpromise guarantee** covers the use of ab92887 in the following tested applications.

The application notes include recommended starting dilutions; optimal dilutions/concentrations should be determined by the end user.

| Application | Abreviews | Notes |
|-------------|-----------|-------|
| IHC-P | | |

Application notes

IHC-P: 1/50. Perform heat mediated antigen retrieval before commencing with IHC staining protocol by boiling tissue section in 10mM Citrate buffer, pH 6.0 for 10-20 min followed by cooling at RT for 20 min.

Not yet tested in other applications.

Optimal dilutions/concentrations should be determined by the end user.

Target

Function

Seems to play a role in the development or function of the kidney glomerular filtration barrier. Regulates glomerular vascular permeability. May anchor the podocyte slit diaphragm to the actin cytoskeleton. Plays a role in skeletal muscle formation through regulation of myoblast fusion.

Tissue specificity

Specifically expressed in podocytes of kidney glomeruli.

Involvement in disease

Defects in NPHS1 are the cause of nephrotic syndrome type 1 (NPHS1) [MIM:256300]; also known as Finnish congenital nephrosis (CNF). A renal disease characterized clinically by proteinuria, hypoalbuminemia, hyperlipidemia, and edema. Kidney biopsies show non-specific histologic changes such as focal segmental glomerulosclerosis and diffuse mesangial proliferation. Some affected individuals have an inherited steroid-resistant form and progress to end-stage renal failure.

Sequence similarities

Belongs to the immunoglobulin superfamily.
Contains 1 fibronectin type-III domain.
Contains 8 Ig-like C2-type (immunoglobulin-like) domains.

Developmental stage

In 23-week-old embryo found in epithelial podocytes of the periphery of mature and developing glomeruli.

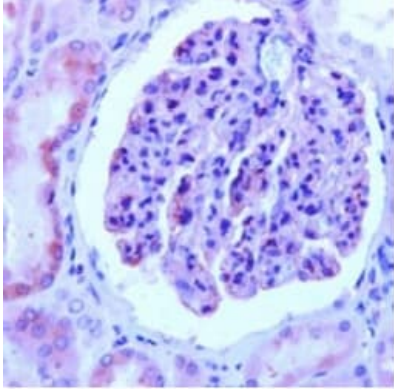
Post-translational modifications

Phosphorylated on tyrosine residues.

Cellular localization

Cell membrane. Predominantly located at podocyte slit diaphragm between podocyte foot processes. Also associated with podocyte apical plasma membrane.

Images



Immunohistochemistry (Formalin/PFA-fixed paraffin-embedded sections) - Anti-Nephryn antibody (ab92887)

ab92887, at 1/50 dilution staining Nephryn in formalin-fixed, paraffin-embedded Human kidney tissue.

Please note: All products are "FOR RESEARCH USE ONLY. NOT FOR USE IN DIAGNOSTIC PROCEDURES"

Our Abpromise to you: Quality guaranteed and expert technical support

- Replacement or refund for products not performing as stated on the datasheet
- Valid for 12 months from date of delivery
- Response to your inquiry within 24 hours
- We provide support in Chinese, English, French, German, Japanese and Spanish
- Extensive multi-media technical resources to help you
- We investigate all quality concerns to ensure our products perform to the highest standards

If the product does not perform as described on this datasheet, we will offer a refund or replacement. For full details of the Abpromise, please visit <https://www.abcam.com/abpromise> or contact our technical team.

Terms and conditions

- Guarantee only valid for products bought direct from Abcam or one of our authorized distributors