


Product datasheet

Anti-Nephrin (phospho Y1217) antibody [EPTPG3] ab80298

Recombinant RabMAb

[8 References](#) [3 Images](#)

Overview

Product name	Anti-Nephrin (phospho Y1217) antibody [EPTPG3]
Description	Rabbit monoclonal [EPTPG3] to Nephrin (phospho Y1217)
Host species	Rabbit
Tested applications	Suitable for: WB, Dot blot
Species reactivity	Reacts with: Human Predicted to work with: Mouse 
Immunogen	Synthetic peptide within Mouse Nephrin (phospho Y1217). The exact sequence is proprietary.
Positive control	WB: 293T transfected with myc-tagged human Nephrin and myc-tagged Src expression vectors.
General notes	<p>This product has switched from a hybridoma to recombinant production method on 20th November 2023.</p> <p>This product is a recombinant monoclonal antibody, which offers several advantages including:</p> <ul style="list-style-type: none">- High batch-to-batch consistency and reproducibility- Improved sensitivity and specificity- Long-term security of supply- Animal-free production <p>For more information see here.</p> <p>Our RabMAb[®] technology is a patented hybridoma-based technology for making rabbit monoclonal antibodies. For details on our patents, please refer to RabMAb[®] patents.</p>

Properties

Form	Liquid
Storage instructions	Shipped at 4°C. Upon delivery aliquot and store at -20°C. Avoid freeze / thaw cycles.
Storage buffer	pH: 7.20 Preservative: 0.01% Sodium azide Constituents: 0.05% BSA, 40% Glycerol (glycerin, glycerine), 59% PBS
Purity	Protein A purified
Clonality	Monoclonal

Clone number	EPTPG3
Isotype	IgG

Applications

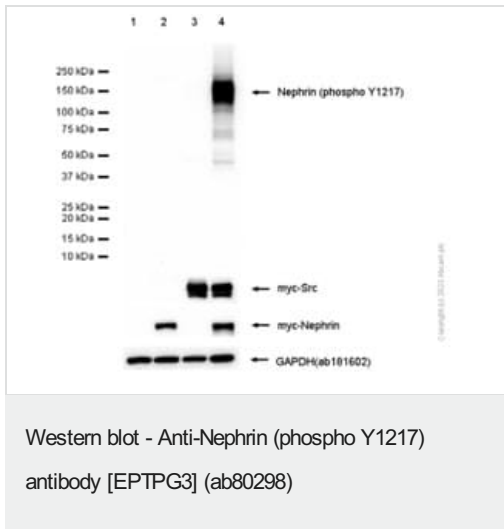
The Abpromise guarantee Our **Abpromise guarantee** covers the use of ab80298 in the following tested applications. The application notes include recommended starting dilutions; optimal dilutions/concentrations should be determined by the end user.

Application	Abreviews	Notes
WB		1/10000. Detects a band of approximately 138 kDa (predicted molecular weight: 138 kDa).
Dot blot		1/1000.

Target

Function	Seems to play a role in the development or function of the kidney glomerular filtration barrier. Regulates glomerular vascular permeability. May anchor the podocyte slit diaphragm to the actin cytoskeleton. Plays a role in skeletal muscle formation through regulation of myoblast fusion.
Tissue specificity	Specifically expressed in podocytes of kidney glomeruli.
Involvement in disease	Defects in NPHS1 are the cause of nephrotic syndrome type 1 (NPHS1) [MIM:256300]; also known as Finnish congenital nephrosis (CNF). A renal disease characterized clinically by proteinuria, hypoalbuminemia, hyperlipidemia, and edema. Kidney biopsies show non-specific histologic changes such as focal segmental glomerulosclerosis and diffuse mesangial proliferation. Some affected individuals have an inherited steroid-resistant form and progress to end-stage renal failure.
Sequence similarities	Belongs to the immunoglobulin superfamily. Contains 1 fibronectin type-III domain. Contains 8 Ig-like C2-type (immunoglobulin-like) domains.
Developmental stage	In 23-week-old embryo found in epithelial podocytes of the periphery of mature and developing glomeruli.
Post-translational modifications	Phosphorylated on tyrosine residues.
Cellular localization	Cell membrane. Predominantly located at podocyte slit diaphragm between podocyte foot processes. Also associated with podocyte apical plasma membrane.

Images



All lanes : Anti-Nephtrin (phospho Y1217) antibody [EPTPG3] (ab80298) at 1/10000 dilution

Lane 1 : 293T (Human embryonic kidney epithelial cell) transfected with a myc-tagged empty vector whole cell lysate

Lane 2 : 293T (Human embryonic kidney epithelial cell) transfected with a myc-tagged human Nephtrin expression vector, whole cell lysate

Lane 3 : 293T (Human embryonic kidney epithelial cell) transfected with a myc-tagged Src expression vector, whole cell lysate

Lane 4 : 293T (Human embryonic kidney epithelial cell) transfected with myc-tagged human Nephtrin and myc-tagged Src expression vectors, whole cell lysate

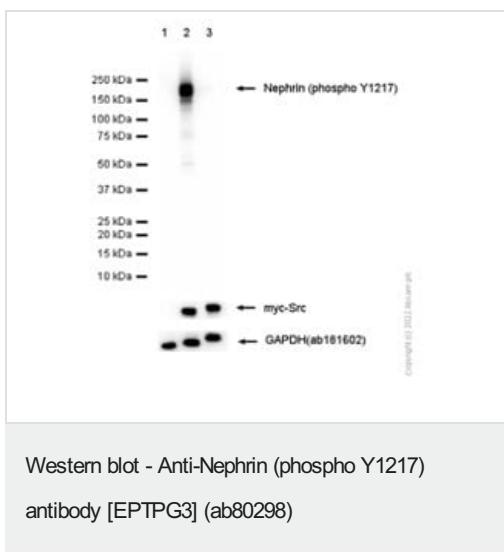
Lysates/proteins at 20 µg per lane.

Predicted band size: 138 kDa

Observed band size: 170 kDa

Exposure time: 3 seconds

Blocking and diluting buffer and concentration: 5% NFDM/TBST.



All lanes : Anti-Nephtrin (phospho Y1217) antibody [EPTPG3] (ab80298) at 1/10000 dilution

Lane 1 : 293T (Human embryonic kidney epithelial cell) transfected with a myc-tagged empty vector whole cell lysate

Lane 2 : 293T (Human embryonic kidney epithelial cell) transfected with with myc-tagged human Nephtrin and myc-tagged Src expression vectors, whole cell lysate

Lane 3 : 293T (Human embryonic kidney epithelial cell) transfected with myc-tagged human Nephtrin and myc-tagged Src expression vectors, whole cell lysate 15 µg. Then the membrane was incubated with Alkaline phosphatase

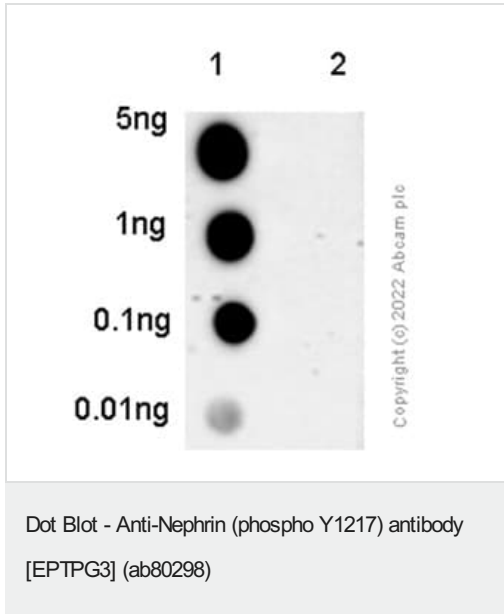
Lysates/proteins at 15 µg per lane.

Predicted band size: 138 kDa

Observed band size: 170 kDa

Exposure time: 3 seconds

Blocking and diluting buffer and concentration: 5% NFDM/TBST.



Dot blot analysis of Nephrin (pY1217) peptide and Nephrin non-phospho peptide labelling PKC alpha Nephrin (pY1217) with ab80298 at a 1/1000 dilution. A peroxidase-conjugated goat anti-rabbit IgG (H+L) was used as the secondary antibody at a 1/20,000 dilution. Blocking and dilution buffer: 5% NFDM/TBST.

Lane 1: Nephrin (pY1217) phospho peptide

Lane 2: Nephrin non-phospho peptide

Please note: All products are "FOR RESEARCH USE ONLY. NOT FOR USE IN DIAGNOSTIC PROCEDURES"

Our Abpromise to you: Quality guaranteed and expert technical support

- Replacement or refund for products not performing as stated on the datasheet
- Valid for 12 months from date of delivery
- Response to your inquiry within 24 hours
- We provide support in Chinese, English, French, German, Japanese and Spanish
- Extensive multi-media technical resources to help you
- We investigate all quality concerns to ensure our products perform to the highest standards

If the product does not perform as described on this datasheet, we will offer a refund or replacement. For full details of the Abpromise, please visit <https://www.abcam.com/abpromise> or contact our technical team.

Terms and conditions

- Guarantee only valid for products bought direct from Abcam or one of our authorized distributors