

# Anti-Nesprin3 antibody ab74261

[5 References](#) [1 Image](#)

### Overview

<b>Product name</b>	Anti-Nesprin3 antibody
<b>Description</b>	Rabbit polyclonal to Nesprin3
<b>Host species</b>	Rabbit
<b>Tested applications</b>	<b>Suitable for:</b> WB
<b>Species reactivity</b>	<b>Reacts with:</b> Human
<b>Immunogen</b>	A synthesized peptide derived from an internal region of human Nesprin3.
<b>General notes</b>	<p>The Life Science industry has been in the grips of a reproducibility crisis for a number of years. Abcam is leading the way in addressing this with our range of recombinant monoclonal antibodies and knockout edited cell lines for gold-standard validation. Please check that this product meets your needs before purchasing.</p> <p>If you have any questions, special requirements or concerns, please send us an inquiry and/or contact our Support team ahead of purchase. Recommended alternatives for this product can be found below, along with publications, customer reviews and Q&amp;As</p>

### Properties

<b>Form</b>	Liquid
<b>Storage instructions</b>	Shipped at 4°C. Upon delivery aliquot and store at -20°C. Avoid freeze / thaw cycles.
<b>Storage buffer</b>	<p>pH: 7.40</p> <p>Preservative: 0.02% Sodium azide</p> <p>Constituents: 50% Glycerol (glycerin, glycerine), 0.87% Sodium chloride, PBS</p> <p>Stabilizing agent.</p>
<b>Purity</b>	Immunogen affinity purified
<b>Purification notes</b>	The antibody was affinity purified from rabbit antiserum by affinity chromatography using epitopespecific immunogen.
<b>Clonality</b>	Polyclonal
<b>Isotype</b>	IgG

### Applications

## The Abpromise guarantee

Our **Abpromise guarantee** covers the use of ab74261 in the following tested applications.

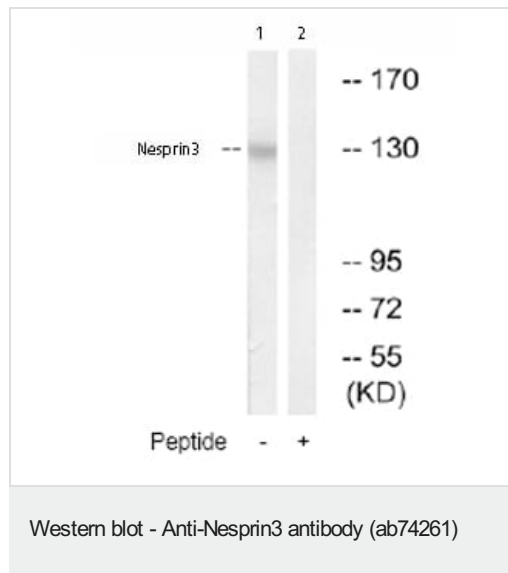
The application notes include recommended starting dilutions; optimal dilutions/concentrations should be determined by the end user.

Application	Abreviews	Notes
WB		1/500 - 1/1000. Predicted molecular weight: 112 kDa.

## Target

<b>Function</b>	Component of SUN-protein-containing multivariate complexes also called LINC complexes which link the nucleoskeleton and cytoskeleton by providing versatile outer nuclear membrane attachment sites for cytoskeletal filaments. Involved in the maintenance of nuclear organization and structural integrity. Probable anchoring protein which tethers the nucleus to the cytoskeleton by binding PLEC which can associate with the intermediate filament system.
<b>Sequence similarities</b>	Belongs to the nesprin family. Contains 1 KASH domain. Contains 2 spectrin repeats.
<b>Domain</b>	The KASH domain is involved in the binding to SUN1 and SUN2 through recognition of their SUN domains.
<b>Cellular localization</b>	Nucleus outer membrane. Located at the rough reticulum endoplasmic (RER) in some cells.

## Images



**All lanes :** Anti-Nesprin3 antibody (ab74261) at 1/500 dilution

**Lane 1 :** Extracts from Jurkat cells

**Lane 2 :** Extracts from Jurkat cells plus 5µg immunizing peptide

Lysates/proteins at 5 µg per lane.

**Predicted band size:** 112 kDa

**Observed band size:** 112 kDa

**Please note:** All products are "FOR RESEARCH USE ONLY. NOT FOR USE IN DIAGNOSTIC PROCEDURES"

## Our Abpromise to you: Quality guaranteed and expert technical support

- Replacement or refund for products not performing as stated on the datasheet
- Valid for 12 months from date of delivery

- Response to your inquiry within 24 hours
- We provide support in Chinese, English, French, German, Japanese and Spanish
- Extensive multi-media technical resources to help you
- We investigate all quality concerns to ensure our products perform to the highest standards

If the product does not perform as described on this datasheet, we will offer a refund or replacement. For full details of the Abpromise, please visit <https://www.abcam.com/abpromise> or contact our technical team.

#### **Terms and conditions**

---

- Guarantee only valid for products bought direct from Abcam or one of our authorized distributors