


### Anti-NET1 antibody ab113202

[2 References](#) [3 Images](#)

#### Overview

<b>Product name</b>	Anti-NET1 antibody
<b>Description</b>	Rabbit polyclonal to NET1
<b>Host species</b>	Rabbit
<b>Tested applications</b>	<b>Suitable for:</b> WB, IP
<b>Species reactivity</b>	<b>Reacts with:</b> Human <b>Predicted to work with:</b> Chimpanzee, Gorilla 
<b>Immunogen</b>	Synthetic peptide, corresponding to a region within amino acids 546-596 of Human NET1 (NP_001040625).
<b>Positive control</b>	WB: Jurkat whole cell lysate and HEK293T whole cell lysate.
<b>General notes</b>	<p>The Life Science industry has been in the grips of a reproducibility crisis for a number of years. Abcam is leading the way in addressing this with our range of recombinant monoclonal antibodies and knockout edited cell lines for gold-standard validation. Please check that this product meets your needs before purchasing.</p> <p>If you have any questions, special requirements or concerns, please send us an inquiry and/or contact our Support team ahead of purchase. Recommended alternatives for this product can be found below, along with publications, customer reviews and Q&amp;As</p>

#### Properties

<b>Form</b>	Liquid
<b>Storage instructions</b>	Shipped at 4°C. Upon delivery aliquot and store at -20°C. Avoid freeze / thaw cycles.
<b>Storage buffer</b>	<p>pH: 7</p> <p>Preservative: 0.09% Sodium azide</p> <p>Constituent: 99% Tris citrate/phosphate</p>
<b>Purity</b>	pH 7 to 8 Immunogen affinity purified
<b>Clonality</b>	Polyclonal
<b>Isotype</b>	IgG

## Applications

### The Abpromise guarantee

Our **Abpromise guarantee** covers the use of ab113202 in the following tested applications.

The application notes include recommended starting dilutions; optimal dilutions/concentrations should be determined by the end user.

Application	Abreviews	Notes
WB		Use a concentration of 0.1 - 1 µg/ml. Predicted molecular weight: 62 kDa.
IP		Use at 2-10 µg/mg of lysate.

## Target

### Function

Acts as guanine nucleotide exchange factor (GEF) for RhoA GTPase. May be involved in activation of the SAPK/JNK pathway Stimulates genotoxic stress-induced RHOB activity in breast cancer cells leading to their cell death.

### Tissue specificity

Widely expressed.

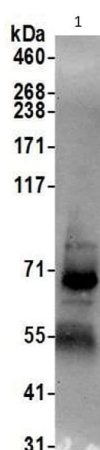
### Sequence similarities

Contains 1 DH (DBL-homology) domain.  
Contains 1 PH domain.

### Cellular localization

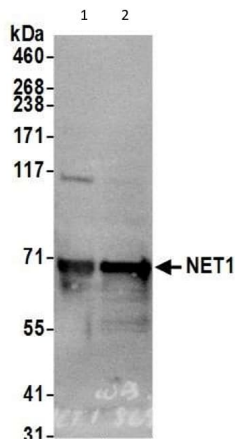
Cytoplasm. Nucleus.

## Images



Immunoprecipitation of NET1 (6 µg of antibody per mg of HEK-293T cell lysate; 20% of the IP loaded). Anti-Net 1 antibody (ab113202) used at 1 µg/ml for western blot. Detection: Chemiluminescence with exposure time of 30 seconds.

Immunoprecipitation - Anti-NET1 antibody  
(ab113202)



Western blot - Anti-NET1 antibody (ab113202)

**All lanes :** Anti-NET1 antibody (ab113202) at 0.1 µg/ml

**Lane 1 :** HEK-293T (Human epithelial cell line from embryonic kidney transformed with large T antigen) whole cell lysate

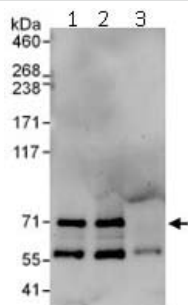
**Lane 2 :** Jurkat (Human T cell leukemia cell line from peripheral blood) whole cell lysate

Lysates/proteins at 50 µg per lane.

**Predicted band size:** 62 kDa

**Exposure time:** 30 seconds

Detected by chemiluminescence.



Immunoprecipitation - Anti-NET1 antibody  
(ab113202)

Immunoprecipitation of NET1 (6 µg of antibody per mg of Jurkat cell lysate; 20% of the IP loaded). Lane 1- Immunoprecipitation with an anti-Net1 antibody that recognizes an upstream epitope; Lane 2- Immunoprecipitation with ab113202; Lane 3- Immunoprecipitation with IgG control. Anti-Net 1 antibody (ab113202) used at 1 µg/ml for western blot. Detection: Chemiluminescence with exposure time of 3 min.

**Please note:** All products are "FOR RESEARCH USE ONLY. NOT FOR USE IN DIAGNOSTIC PROCEDURES"

### Our Abpromise to you: Quality guaranteed and expert technical support

- Replacement or refund for products not performing as stated on the datasheet
- Valid for 12 months from date of delivery
- Response to your inquiry within 24 hours
- We provide support in Chinese, English, French, German, Japanese and Spanish
- Extensive multi-media technical resources to help you

- We investigate all quality concerns to ensure our products perform to the highest standards

If the product does not perform as described on this datasheet, we will offer a refund or replacement. For full details of the Abpromise, please visit <https://www.abcam.com/abpromise> or contact our technical team.

#### **Terms and conditions**

---

- Guarantee only valid for products bought direct from Abcam or one of our authorized distributors