

## Product datasheet

# Anti-Neurotensin Receptor 2 antibody ab48273

[1 References](#) [1 Image](#)

### Overview

---

<b>Product name</b>	Anti-Neurotensin Receptor 2 antibody
<b>Description</b>	Rabbit polyclonal to Neurotensin Receptor 2
<b>Host species</b>	Rabbit
<b>Tested applications</b>	<b>Suitable for:</b> IHC-P
<b>Species reactivity</b>	<b>Reacts with:</b> Human
<b>Immunogen</b>	Synthetic peptide: PQSPTLMDTASGFGDPPETRT , corresponding to C terminal amino acids 381-401 of Human Neurotensin Receptor 2 <a href="#">Run BLAST with</a> <a href="#">Run BLAST with</a>

### General notes

The Life Science industry has been in the grips of a reproducibility crisis for a number of years. Abcam is leading the way in addressing this with our range of recombinant monoclonal antibodies and knockout edited cell lines for gold-standard validation. Please check that this product meets your needs before purchasing.

If you have any questions, special requirements or concerns, please send us an inquiry and/or contact our Support team ahead of purchase. Recommended alternatives for this product can be found below, along with publications, customer reviews and Q&As

### Properties

---

<b>Form</b>	Liquid
<b>Storage instructions</b>	Shipped at 4°C. Upon delivery aliquot and store at -20°C or -80°C. Avoid repeated freeze / thaw cycles.
<b>Storage buffer</b>	Preservative: 0.05% Sodium azide Constituent: Whole serum
<b>Purity</b>	Whole antiserum
<b>Clonality</b>	Polyclonal
<b>Isotype</b>	IgG

### Applications

---

## The Abpromise guarantee

Our **Abpromise guarantee** covers the use of ab48273 in the following tested applications.

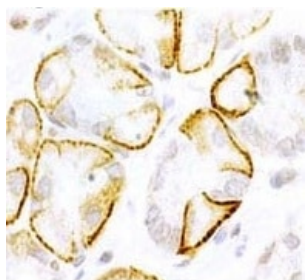
The application notes include recommended starting dilutions; optimal dilutions/concentrations should be determined by the end user.

Application	Abreviews	Notes
IHC-P		Use at an assay dependent concentration.

## Target

<b>Function</b>	Receptor for the tridecapeptide neurotensin. It is associated with G proteins that activate a phosphatidylinositol-calcium second messenger system.
<b>Sequence similarities</b>	Belongs to the G-protein coupled receptor 1 family. Neurotensin receptor subfamily. NTSR2 sub-subfamily.
<b>Cellular localization</b>	Cell membrane.

## Images



Immunostaining of Neurotensin Receptor 2 from paraffin embedded parietal cells of Human gastric mucosa tissue sections using ab48273.

Immunohistochemistry (Formalin/PFA-fixed paraffin-embedded sections) - Anti-Neurotensin Receptor 2 antibody (ab48273)

**Please note:** All products are "FOR RESEARCH USE ONLY. NOT FOR USE IN DIAGNOSTIC PROCEDURES"

## Our Abpromise to you: Quality guaranteed and expert technical support

- Replacement or refund for products not performing as stated on the datasheet
- Valid for 12 months from date of delivery
- Response to your inquiry within 24 hours
- We provide support in Chinese, English, French, German, Japanese and Spanish
- Extensive multi-media technical resources to help you
- We investigate all quality concerns to ensure our products perform to the highest standards

If the product does not perform as described on this datasheet, we will offer a refund or replacement. For full details of the Abpromise, please visit <https://www.abcam.com/abpromise> or contact our technical team.

## Terms and conditions

---

- Guarantee only valid for products bought direct from Abcam or one of our authorized distributors