

Anti-Neutrophil antibody [7/4] ab53457

★★★★★ [1 Abreviews](#) [34 References](#) [1 Image](#)

Overview

Product name	Anti-Neutrophil antibody [7/4]
Description	Rat monoclonal [7/4] to Neutrophil
Host species	Rat
Specificity	Rat anti mouse Ly-6B.2, clone 7/4 recognizes the Ly-6B.2 antigen in 129J; AKR; C57BL/6; C57BL/10; C58; DBA/2; NZB; NZW; SJL; MFI; Swiss (PO) strains. A2G; A/Sn; ASW; BALB/c; C3H/HEH: CBA.T6T6 are negative or demonstrate very weak reactivity.
Tested applications	Suitable for: IHC-P, WB, IHC-Fr, ICC/IF, Flow Cyt
Species reactivity	Reacts with: Mouse
Immunogen	Tissue, cells or virus corresponding to Neutrophil. Cultured bone marrow cells
Epitope	Recognizes the Ly-6B.2 antigen.
Positive control	Flow cytometry: Mouse peripheral blood granulocytes.
General notes	<p>Ly-6B.2 is a ~25-30 kDa GPI-anchored, heavily glycosylated protein expressed on neutrophils, inflammatory monocytes and some activated macrophages. High levels of expression are seen in bone marrow, spleen, lung and lymph nodes. N-glycanase treatment of thioglycollate elicited peritoneal neutrophil lysates lowers the apparent molecular weight of Ly-6B.2 to ~15 kDa.</p> <p>ab53457 has been successfully used for the immunomagnetic depletion of neutrophils during the enrichment of primitive hematopoietic cells from bone marrow and the depletion of myeloid cells <i>in vivo</i>.</p> <p>The Life Science industry has been in the grips of a reproducibility crisis for a number of years. Abcam is leading the way in addressing this with our range of recombinant monoclonal antibodies and knockout edited cell lines for gold-standard validation. Please check that this product meets your needs before purchasing.</p> <p>If you have any questions, special requirements or concerns, please send us an inquiry and/or contact our Support team ahead of purchase. Recommended alternatives for this product can be found below, along with publications, customer reviews and Q&As</p>

Properties

Form	Liquid
Storage instructions	Shipped at 4°C. Store at +4°C short term (1-2 weeks). Store at -20°C or -80°C. Avoid freeze /

	thaw cycle.
Storage buffer	Preservative: 0.09% Sodium azide Constituent: PBS
Purity	Protein G purified
Purification notes	Purified IgG prepared by affinity chromatography on Protein G from tissue culture supernatant.
Clonality	Monoclonal
Clone number	7/4
Myeloma	Y3/Ag1.2.3
Isotype	IgG2a

Applications

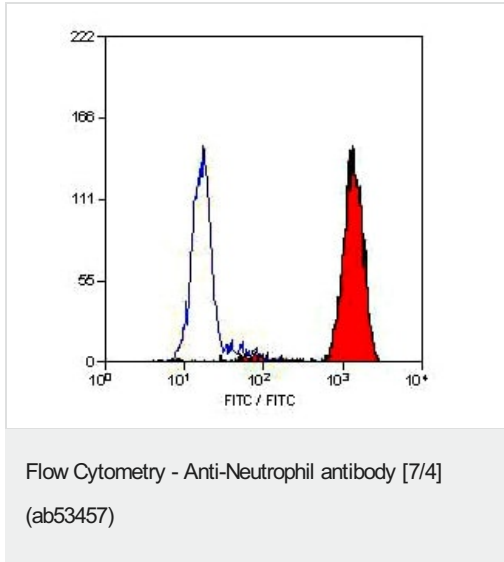
The Abpromise guarantee Our **Abpromise guarantee** covers the use of ab53457 in the following tested applications. The application notes include recommended starting dilutions; optimal dilutions/concentrations should be determined by the end user.

Application	Abreviews	Notes
IHC-P	★★★★★ (1)	Use at an assay dependent concentration. PubMed: 25505239
WB		Use at an assay dependent concentration.
IHC-Fr		Use at an assay dependent concentration.
ICC/IF		Use at an assay dependent concentration.
Flow Cyt		1/50 - 1/100. Use 10µl of the suggested working dilution to label 10 ⁶ cells in 100µl.

Target

Cellular localization Cell membrane; Lipid-anchor, GPI-anchor

Images



Staining of mouse peripheral blood granulocytes with Rat anti mouse neutrophil (ab53457).

Please note: All products are "FOR RESEARCH USE ONLY. NOT FOR USE IN DIAGNOSTIC PROCEDURES"

Our Abpromise to you: Quality guaranteed and expert technical support

- Replacement or refund for products not performing as stated on the datasheet
- Valid for 12 months from date of delivery
- Response to your inquiry within 24 hours
- We provide support in Chinese, English, French, German, Japanese and Spanish
- Extensive multi-media technical resources to help you
- We investigate all quality concerns to ensure our products perform to the highest standards

If the product does not perform as described on this datasheet, we will offer a refund or replacement. For full details of the Abpromise, please visit <https://www.abcam.com/abpromise> or contact our technical team.

Terms and conditions

- Guarantee only valid for products bought direct from Abcam or one of our authorized distributors