


## Product datasheet

# Anti-Neutrophil Elastase antibody ab68672

★★★★★ [19 Abreviews](#) [178 References](#) [3 Images](#)

### Overview

<b>Product name</b>	Anti-Neutrophil Elastase antibody
<b>Description</b>	Rabbit polyclonal to Neutrophil Elastase
<b>Host species</b>	Rabbit
<b>Specificity</b>	We have had mixed results for use of this antibody in IHC-P using Mouse tissue samples. The abReview data below from external researchers reports good staining with this antibody in Mouse tissue samples using IHC-Fr.
<b>Tested applications</b>	<b>Suitable for:</b> IHC-P <b>Unsuitable for:</b> WB
<b>Species reactivity</b>	<b>Reacts with:</b> Mouse, Human <b>Predicted to work with:</b> Horse, Dog 
<b>Immunogen</b>	Synthetic peptide corresponding to Human Neutrophil Elastase aa 1-100 (internal sequence) conjugated to keyhole limpet haemocyanin. (Peptide available as <a href="#">ab68671</a> )
<b>Positive control</b>	IHC-P: Human spleen and mouse spleen tissue.
<b>General notes</b>	<p>The Life Science industry has been in the grips of a reproducibility crisis for a number of years. Abcam is leading the way in addressing this with our range of recombinant monoclonal antibodies and knockout edited cell lines for gold-standard validation. Please check that this product meets your needs before purchasing.</p> <p>If you have any questions, special requirements or concerns, please send us an inquiry and/or contact our Support team ahead of purchase. Recommended alternatives for this product can be found below, along with publications, customer reviews and Q&amp;As</p>

### Properties

<b>Form</b>	Liquid
<b>Storage instructions</b>	Shipped at 4°C. Store at +4°C short term (1-2 weeks). Upon delivery aliquot. Store at -20°C or -80°C. Avoid freeze / thaw cycle.
<b>Storage buffer</b>	pH: 7.40 Preservative: 0.02% Sodium azide Constituent: PBS

Batches of this product that have a concentration < 1mg/ml may have BSA added as a stabilising agent. If you would like information about the formulation of a specific lot, please contact our scientific support team who will be happy to help.

<b>Purity</b>	Immunogen affinity purified
<b>Clonality</b>	Polyclonal
<b>Isotype</b>	IgG

## Applications

**The Abpromise guarantee** Our **Abpromise guarantee** covers the use of ab68672 in the following tested applications. The application notes include recommended starting dilutions; optimal dilutions/concentrations should be determined by the end user.

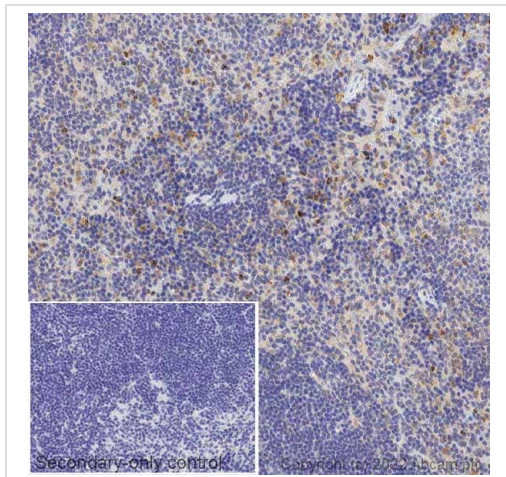
Application	Abreviews	Notes
IHC-P	★★★★★ (8)	1/100 - 1/200. Perform heat mediated antigen retrieval with citrate buffer pH 6 before commencing with IHC staining protocol.

**Application notes** Is unsuitable for WB.

## Target

<b>Function</b>	Modifies the functions of natural killer cells, monocytes and granulocytes. Inhibits C5a-dependent neutrophil enzyme release and chemotaxis.
<b>Tissue specificity</b>	Bone marrow cells.
<b>Involvement in disease</b>	<p>Defects in ELANE are a cause of cyclic haematopoiesis (CH) [MIM:162800]; also known as cyclic neutropenia. CH is an autosomal dominant disease in which blood-cell production from the bone marrow oscillates with 21-day periodicity. Circulating neutrophils vary between almost normal numbers and zero. During intervals of neutropenia, affected individuals are at risk for opportunistic infection. Monocytes, platelets, lymphocytes and reticulocytes also cycle with the same frequency.</p> <p>Defects in ELANE are the cause of neutropenia severe congenital autosomal dominant type 1 (SCN1) [MIM:202700]. SCN1 is a disorder of hematopoiesis characterized by a maturation arrest of granulopoiesis at the level of promyelocytes with peripheral blood absolute neutrophil counts below <math>0.5 \times 10^9/l</math> and early onset of severe bacterial infections.</p>
<b>Sequence similarities</b>	<p>Belongs to the peptidase S1 family. Elastase subfamily.</p> <p>Contains 1 peptidase S1 domain.</p>

## Images

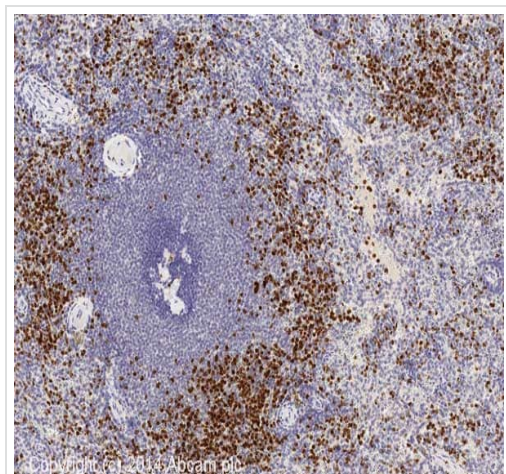


Immunohistochemistry (Formalin/PFA-fixed paraffin-embedded sections) - Anti-Neutrophil Elastase antibody (ab68672)

Lab

IHC image of Neutrophil Elastase staining in a section of formalin-fixed paraffin-embedded normal mouse spleen performed on a Leica Biosystems BOND<sup>®</sup> RX instrument. The section was pre-treated using heat mediated antigen retrieval with sodium citrate buffer (pH6, epitope retrieval solution 1) for 20mins. The section was then incubated with ab68672, 5ug/ml, for 15 mins at room temperature and detected using an HRP conjugated compact polymer system. DAB was used as the chromogen. The section was then counterstained with haematoxylin and mounted with DPX. The inset secondary-only control image is taken from an identical assay without primary antibody.

For other IHC staining systems (automated and non-automated) customers should optimize variable parameters such as antigen retrieval conditions, primary antibody concentration and antibody incubation times.

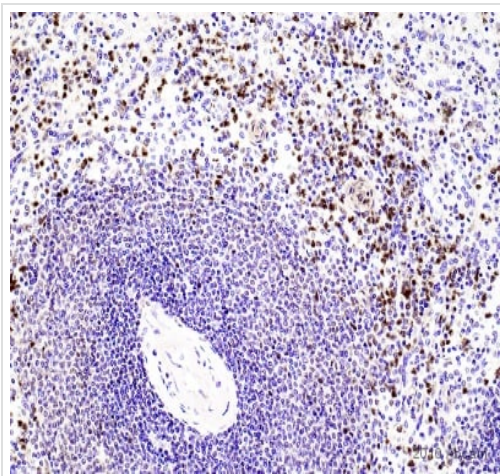


Immunohistochemistry (Formalin/PFA-fixed paraffin-embedded sections) - Anti-Neutrophil Elastase antibody (ab68672)

IHC image of Neutrophil Elastase staining in human spleen formalin fixed paraffin embedded tissue section\*, performed on a Leica Bond<sup>™</sup> system using the standard protocol F. The section was pre-treated using heat mediated antigen retrieval with sodium citrate buffer (pH6, epitope retrieval solution 1) for 20 mins. The section was then incubated with ab68672, 1ug/ml, for 15 mins at room temperature and detected using an HRP conjugated compact polymer system. DAB was used as the chromogen. The section was then counterstained with haematoxylin and mounted with DPX.

For other IHC staining systems (automated and non-automated) customers should optimize variable parameters such as antigen retrieval conditions, primary antibody concentration and antibody incubation times.

\*Tissue obtained from the Human Research Tissue Bank, supported by the NIHR Cambridge Biomedical Research Centre



Immunohistochemistry (Formalin/PFA-fixed paraffin-embedded sections) - Anti-Neutrophil Elastase antibody (ab68672)

This image is courtesy of an abreview submitted by Carl Hobbs, King's College London, United Kingdom

Immunohistochemical detection of Neutrophil Elastase using antibody (ab68672) on formaldehyde-fixed paraffin-embedded human spleen sections. Antigen retrieval step: heat mediated in citric acid pH6 buffer. Permeabilization: No Blocking step: 1% BSA for 10 mins @ rt°C. Primary antibody dilution 1/2000; incubation time: 2 hours in TBS/BSA/azide. Secondary Antibody: anti Rabbit IgG conjugated to biotin (1/200).

**Please note:** All products are "FOR RESEARCH USE ONLY. NOT FOR USE IN DIAGNOSTIC PROCEDURES"

### Our Abpromise to you: Quality guaranteed and expert technical support

- Replacement or refund for products not performing as stated on the datasheet
- Valid for 12 months from date of delivery
- Response to your inquiry within 24 hours
- We provide support in Chinese, English, French, German, Japanese and Spanish
- Extensive multi-media technical resources to help you
- We investigate all quality concerns to ensure our products perform to the highest standards

If the product does not perform as described on this datasheet, we will offer a refund or replacement. For full details of the Abpromise, please visit <https://www.abcam.com/abpromise> or contact our technical team.

### Terms and conditions

- Guarantee only valid for products bought direct from Abcam or one of our authorized distributors