

Product datasheet

Anti-Neutrophil Elastase antibody [SP203] α b183342

Recombinant RabMAb

[1 References](#) [5 Images](#)

Overview

Product name	Anti-Neutrophil Elastase antibody [SP203]
Description	Rabbit monoclonal [SP203] to Neutrophil Elastase
Host species	Rabbit
Tested applications	Suitable for: Flow Cyt (Intra), IHC-P
Species reactivity	Reacts with: Human
Immunogen	Synthetic peptide. This information is proprietary to Abcam and/or its suppliers.
Positive control	IHC-P: Human tonsil, and spleen tissue; Flow Cyt (Intra): THP-1 cells.
General notes	<p>This product is a recombinant monoclonal antibody, which offers several advantages including:</p> <ul style="list-style-type: none"> - High batch-to-batch consistency and reproducibility - Improved sensitivity and specificity - Long-term security of supply - Animal-free production <p>For more information see here.</p> <p>This product is FOR RESEARCH USE ONLY. For commercial use, please contact partnerships@abcam.com.</p>

Properties

Form	Liquid
Storage instructions	Shipped at 4°C. Store at +4°C short term (1-2 weeks). Upon delivery aliquot. Store at -20°C long term. Avoid freeze / thaw cycle.
Storage buffer	<p>pH: 7.60</p> <p>Preservative: 0.1% Sodium azide</p> <p>Constituents: PBS, 1% BSA</p>
Purity	Protein A/G purified
Purification notes	Purified from TCS by protein A/G.
Clonality	Monoclonal
Clone number	SP203
Isotype	IgG

Applications

The Abpromise guarantee Our **Abpromise guarantee** covers the use of ab183342 in the following tested applications.

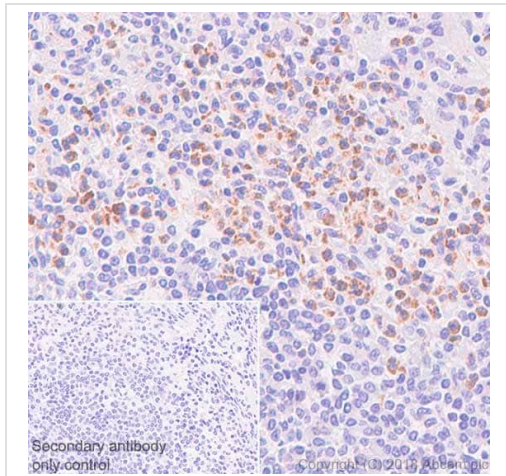
The application notes include recommended starting dilutions; optimal dilutions/concentrations should be determined by the end user.

Application	Abreviews	Notes
Flow Cyt (Intra)		1/20.
IHC-P		1/100.

Target

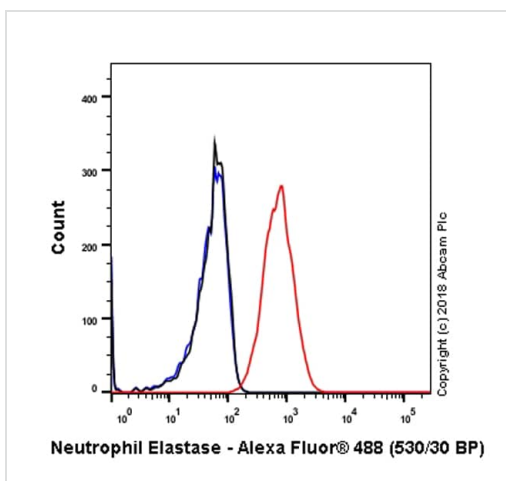
Function	Modifies the functions of natural killer cells, monocytes and granulocytes. Inhibits C5a-dependent neutrophil enzyme release and chemotaxis.
Tissue specificity	Bone marrow cells.
Involvement in disease	<p>Defects in ELANE are a cause of cyclic haematopoiesis (CH) [MIM:162800]; also known as cyclic neutropenia. CH is an autosomal dominant disease in which blood-cell production from the bone marrow oscillates with 21-day periodicity. Circulating neutrophils vary between almost normal numbers and zero. During intervals of neutropenia, affected individuals are at risk for opportunistic infection. Monocytes, platelets, lymphocytes and reticulocytes also cycle with the same frequency.</p> <p>Defects in ELANE are the cause of neutropenia severe congenital autosomal dominant type 1 (SCN1) [MIM:202700]. SCN1 is a disorder of hematopoiesis characterized by a maturation arrest of granulopoiesis at the level of promyelocytes with peripheral blood absolute neutrophil counts below $0.5 \times 10^9/l$ and early onset of severe bacterial infections.</p>
Sequence similarities	<p>Belongs to the peptidase S1 family. Elastase subfamily.</p> <p>Contains 1 peptidase S1 domain.</p>

Images



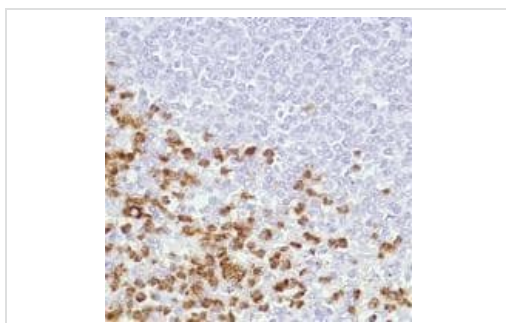
Immunohistochemistry (Formalin/PFA-fixed paraffin-embedded sections) - Anti-Neutrophil Elastase antibody [SP203] (ab183342)

Immunohistochemistry (Formalin/PFA-fixed paraffin-embedded sections) analysis of Human spleen tissue sections labeling Neutrophil Elastase with ab183342 at 1/100 dilution (2.46 µg/ml). Heat mediated antigen retrieval was performed Heat mediated antigen retrieval with Tris-EDTA buffer (pH 9.0, epitope retrieval solution 2) for 10 mins. Rabbit specific IHC polymer detection kit HRP/DAB ([ab209101](#)) was used as the secondary antibody. Negative control: PBS instead of the primary antibody. Hematoxylin was used as a counterstain.



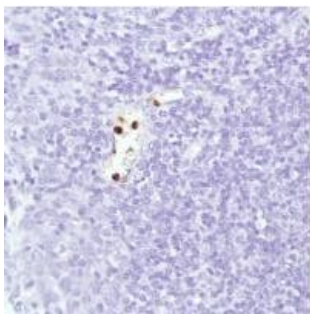
Flow Cytometry (Intracellular) - Anti-Neutrophil Elastase antibody [SP203] (ab183342)

Flow cytometry analysis of THP-1 (human monocytic leukemia monocyte) labeling Neutrophil Elastase with purified ab183342 at 1/20 dilution (12.3 µg/ml) (red). Cells were fixed with 4% paraformaldehyde and permeabilised with 90% methanol. Goat anti rabbit IgG (Alexa Fluor® 488, [ab150081](#)) at 1/2000 dilution was used as a secondary antibody. Isotype control -Rabbit monoclonal IgG ([ab172730](#)) / Black. Unlabeled control -Unlabelled cells / blue.



Immunohistochemistry (Formalin/PFA-fixed paraffin-embedded sections) - Anti-Neutrophil Elastase antibody [SP203] (ab183342)

Immunohistochemical analysis of paraffin-embedded Human spleen tissue labeling Neutrophil Elastase with ab183342 at 1/100 dilution.



Immunohistochemical analysis of paraffin-embedded Human tonsil tissue labeling Neutrophil Elastase with ab183342 at 1/100 dilution.

Immunohistochemistry (Formalin/PFA-fixed paraffin-embedded sections) - Anti-Neutrophil Elastase antibody [SP203] (ab183342)

Why choose a recombinant antibody?



Research with confidence
Consistent and reproducible results



Long-term and scalable supply
Recombinant technology



Success from the first experiment
Confirmed specificity



Ethical standards compliant
Animal-free production

Anti-Neutrophil Elastase antibody [SP203] (ab183342)

Please note: All products are "FOR RESEARCH USE ONLY. NOT FOR USE IN DIAGNOSTIC PROCEDURES"

Our Abpromise to you: Quality guaranteed and expert technical support

- Replacement or refund for products not performing as stated on the datasheet
- Valid for 12 months from date of delivery
- Response to your inquiry within 24 hours
- We provide support in Chinese, English, French, German, Japanese and Spanish
- Extensive multi-media technical resources to help you
- We investigate all quality concerns to ensure our products perform to the highest standards

If the product does not perform as described on this datasheet, we will offer a refund or replacement. For full details of the Abpromise, please visit <https://www.abcam.com/abpromise> or contact our technical team.

Terms and conditions

- Guarantee only valid for products bought direct from Abcam or one of our authorized distributors