


### Anti-NF2 / Merlin antibody ab217016

[1 References](#) [1 Image](#)

#### Overview

<b>Product name</b>	Anti-NF2 / Merlin antibody
<b>Description</b>	Rabbit polyclonal to NF2 / Merlin
<b>Host species</b>	Rabbit
<b>Tested applications</b>	<b>Suitable for:</b> IHC-P
<b>Species reactivity</b>	<b>Reacts with:</b> Rat <b>Predicted to work with:</b> Mouse, Human 
<b>Immunogen</b>	Synthetic peptide within Human NF2/ Merlin aa 430-480 conjugated to keyhole limpet haemocyanin. The exact sequence is proprietary. Database link: <a href="#">P35240</a>
<b>Positive control</b>	Rat brain tissue.
<b>General notes</b>	<p>The Life Science industry has been in the grips of a reproducibility crisis for a number of years. Abcam is leading the way in addressing this with our range of recombinant monoclonal antibodies and knockout edited cell lines for gold-standard validation. Please check that this product meets your needs before purchasing.</p> <p>If you have any questions, special requirements or concerns, please send us an inquiry and/or contact our Support team ahead of purchase. Recommended alternatives for this product can be found below, along with publications, customer reviews and Q&amp;As</p>

#### Properties

<b>Form</b>	Liquid
<b>Storage instructions</b>	Shipped at 4°C. Store at +4°C short term (1-2 weeks). Upon delivery aliquot. Store at -20°C long term. Avoid freeze / thaw cycle.
<b>Storage buffer</b>	pH: 7.40 Preservative: 0.02% Proclin 300 Constituents: 50% Glycerol (glycerin, glycerine), 1% BSA, 48.98% TBS, 1X
<b>Purity</b>	Protein A purified
<b>Clonality</b>	Polyclonal
<b>Isotype</b>	IgG

## Applications

### The Abpromise guarantee

Our **Abpromise guarantee** covers the use of ab217016 in the following tested applications.

The application notes include recommended starting dilutions; optimal dilutions/concentrations should be determined by the end user.

Application	Abreviews	Notes
IHC-P		1/100 - 1/500.

## Target

### Function

Probable regulator of the Hippo/SWH (Sav/Wts/Hpo) signaling pathway, a signaling pathway that plays a pivotal role in tumor suppression by restricting proliferation and promoting apoptosis. Along with WWC1 can synergistically induce the phosphorylation of LATS1 and LATS2 and can probably function in the regulation of the Hippo/SWH (Sav/Wts/Hpo) signaling pathway. May act as a membrane stabilizing protein. May inhibit PI3 kinase by binding to AGAP2 and impairing its stimulating activity. Suppresses cell proliferation and tumorigenesis by inhibiting the CUL4A-RBX1-DDB1-VprBP/DCAF1 E3 ubiquitin-protein ligase complex.

### Tissue specificity

Widely expressed. Isoform 1 and isoform 3 are predominant. Isoform 4, isoform 5 and isoform 6 are expressed moderately. Isoform 8 is found at low frequency. Isoform 7, isoform 9 and isoform 10 are not expressed in adult tissues, with the exception of adult retina expressing isoform 10. Isoform 9 is faintly expressed in fetal brain, heart, lung, skeletal muscle and spleen. Fetal thymus expresses isoforms 1, 7, 9 and 10 at similar levels.

### Involvement in disease

Defects in NF2 are the cause of neurofibromatosis 2 (NF2) [MIM:101000]; also known as central neurofibromatosis. NF2 is a genetic disorder characterized by bilateral vestibular schwannomas (formerly called acoustic neuromas), schwannomas of other cranial and peripheral nerves, meningiomas, and ependymomas. It is inherited in an autosomal dominant fashion with full penetrance. Affected individuals generally develop symptoms of eighth-nerve dysfunction in early adulthood, including deafness and balance disorder. Although the tumors of NF2 are histologically benign, their anatomic location makes management difficult, and patients suffer great morbidity and mortality.

Defects in NF2 are a cause of schwannomatosis (SCHWA) [MIM:162091]; also known as congenital cutaneous neurilemmomatosis. Schwannomas are benign tumors of the peripheral nerve sheath that usually occur singly in otherwise normal individuals. Multiple schwannomas in the same individual suggest an underlying tumor-predisposition syndrome. The most common such syndrome is NF2. The hallmark of NF2 is the development of bilateral vestibular-nerve schwannomas; but two-thirds or more of all NF2-affected individuals develop schwannomas in other locations, and dermal schwannomas may precede vestibular tumors in NF2-affected children. There have been several reports of individuals with multiple schwannomas who do not show evidence of vestibular schwannoma. Clinical report suggests that schwannomatosis is a clinical entity distinct from other forms of neurofibromatosis.

### Sequence similarities

Contains 1 FERM domain.

### Post-translational modifications

Phosphorylation of Ser-518 inhibits nuclear localization by disrupting the intramolecular association of the FERM domain with the C-terminal tail.

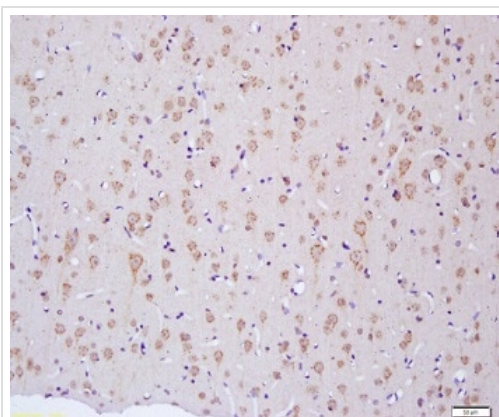
Ubiquitinated by the CUL4A-RBX1-DDB1-DCAF1/VprBP E3 ubiquitin-protein ligase complex for ubiquitination and subsequent proteasome-dependent degradation.

### Cellular localization

Cytoplasm > perinuclear region. Cytoplasmic granule. Observed in cytoplasmic granules concentrated in a perinuclear location. Isoform 7 is absent from ruffling membranes and filopodia; Cytoplasm > perinuclear region. Cytoplasmic granule. Observed in cytoplasmic granules

concentrated in a perinuclear location. Isoform 9 is absent from ruffling membranes and filopodia; Nucleus. Cell projection > filopodium membrane. Cell projection > ruffle membrane. Cytoplasm > perinuclear region. Cytoplasmic granule. Cytoplasm > cytoskeleton. In a fibroblastic cell line, isoform 10 is found homogeneously distributed over the entire cell, with a particularly strong staining in ruffling membranes and filopodia and Cell projection > filopodium membrane. Cell projection > ruffle membrane. Nucleus. In a fibroblastic cell line, isoform 1 is found homogeneously distributed over the entire cell, with a particularly strong staining in ruffling membranes and filopodia. Colocalizes with MPP1 in non-myelin-forming Schwann cells. Binds with VPRBP in the nucleus. The intramolecular association of the FERM domain with the C-terminal tail promotes nuclear accumulation. The unphosphorylated form accumulates predominantly in the nucleus while the phosphorylated form is largely confined to the non-nuclear fractions.

## Images



Immunohistochemical analysis of formalin-fixed and paraffin-embedded rat brain tissue labeling NF2 / Merlin with ab217016 at 1/200 dilution, followed by conjugation to the secondary antibody and DAB staining.

Immunohistochemistry (Formalin/PFA-fixed paraffin-embedded sections) - Anti-NF2 / Merlin antibody (ab217016)

**Please note:** All products are "FOR RESEARCH USE ONLY. NOT FOR USE IN DIAGNOSTIC PROCEDURES"

## Our Abpromise to you: Quality guaranteed and expert technical support

- Replacement or refund for products not performing as stated on the datasheet
- Valid for 12 months from date of delivery
- Response to your inquiry within 24 hours
- We provide support in Chinese, English, French, German, Japanese and Spanish
- Extensive multi-media technical resources to help you
- We investigate all quality concerns to ensure our products perform to the highest standards

If the product does not perform as described on this datasheet, we will offer a refund or replacement. For full details of the Abpromise, please visit <https://www.abcam.com/abpromise> or contact our technical team.

## Terms and conditions

- Guarantee only valid for products bought direct from Abcam or one of our authorized distributors