



Product datasheet

Anti-NFkB Inducing Kinase NIK antibody ab19144

[4 References](#) [3 Images](#)

Overview

| | |
|----------------------------|---|
| Product name | Anti-NFkB Inducing Kinase NIK antibody |
| Description | Rabbit polyclonal to NFkB Inducing Kinase NIK |
| Host species | Rabbit |
| Specificity | This antibody recognises human NFkB Inducing Kinase NIK. |
| Tested applications | Suitable for: IHC-P, ICC/IF, WB |
| Species reactivity | Reacts with: Human |
| Immunogen | Synthetic peptide: SFAWSWRVKHGGLENRP , corresponding to amino acids 931-947 of Human NFkB Inducing Kinase NIK  Run BLAST with  Run BLAST with |
| Positive control | Whole cell lysate of 293. |
| General notes | <p>The Life Science industry has been in the grips of a reproducibility crisis for a number of years. Abcam is leading the way in addressing this with our range of recombinant monoclonal antibodies and knockout edited cell lines for gold-standard validation. Please check that this product meets your needs before purchasing.</p> <p>If you have any questions, special requirements or concerns, please send us an inquiry and/or contact our Support team ahead of purchase. Recommended alternatives for this product can be found below, along with publications, customer reviews and Q&As</p> |

Properties

| | |
|-----------------------------|---|
| Form | Liquid |
| Storage instructions | Shipped at 4°C. Upon delivery aliquot and store at -20°C or -80°C. Avoid repeated freeze / thaw cycles. |
| Storage buffer | pH: 7.40 Preservative: 0.02% Sodium azide Constituent: PBS |
| Purity | Immunogen affinity purified |
| Clonality | Polyclonal |
| Isotype | IgG |

Applications

The Abpromise guarantee

Our **Abpromise guarantee** covers the use of ab19144 in the following tested applications.

The application notes include recommended starting dilutions; optimal dilutions/concentrations should be determined by the end user.

| Application | Abreviews | Notes |
|-------------|-----------|--|
| IHC-P | | Use a concentration of 5 µg/ml. Perform heat mediated antigen retrieval with citrate buffer pH 6 before commencing with IHC staining protocol. |
| ICC/IF | | Use a concentration of 1 - 5 µg/ml. |
| WB | | 1/500. Detects a band of approximately 105 kDa (predicted molecular weight: 105.4 kDa). |

Target

Function

Lymphotoxin beta-activated kinase which seems to be exclusively involved in the activation of NF-kappa-B and its transcriptional activity. Promotes proteolytic processing of NFKB2/P100, which leads to activation of NF-kappa-B via the non-canonical pathway. Could act in a receptor-selective manner.

Tissue specificity

Weakly expressed in testis, small intestine, spleen, thymus, peripheral blood leukocytes, prostate, ovary and colon.

Sequence similarities

Belongs to the protein kinase superfamily. STE Ser/Thr protein kinase family. MAP kinase kinase kinase subfamily.

Contains 1 protein kinase domain.

Post-translational modifications

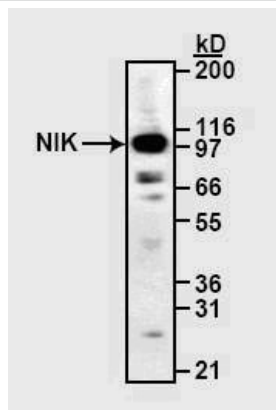
Autophosphorylated. Phosphorylation at Thr-559 is required to activates its kinase activity and 'Lys-63'-linked polyubiquitination. Phosphorylated by CHUK/IKKA leading to MAP3K14 destabilization.

Ubiquitinated. Undergoes both 'Lys-48'- and 'Lys-63'-linked polyubiquitination. 'Lys-48'-linked polyubiquitination leads to its degradation by the proteasome, while 'Lys-63'-linked polyubiquitination stabilizes and activates it.

Cellular localization

Cytoplasm.

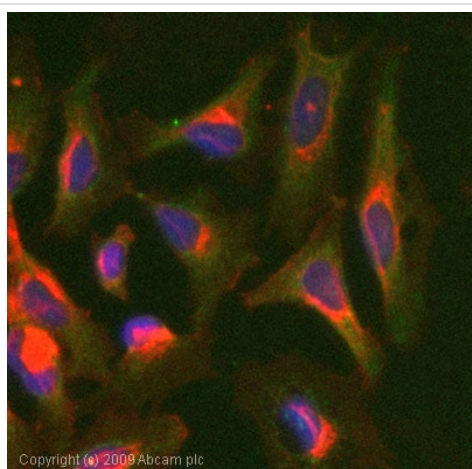
Images



Western blot - Anti-NFkB Inducing Kinase NIK antibody (ab19144)

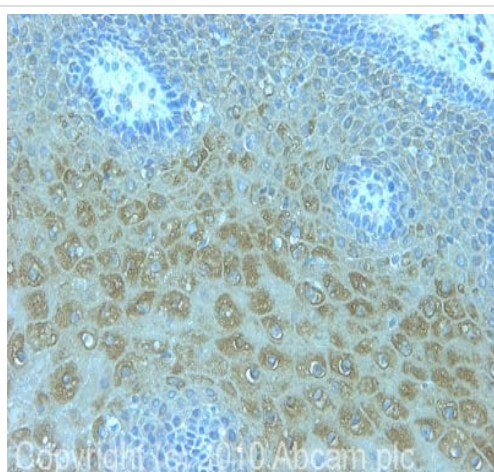
Anti-NFkB Inducing Kinase NIK antibody (ab19144) at 1/500 dilution + NIK-transfected 293 cell lysate

Predicted band size: 105.4 kDa



Immunocytochemistry/ Immunofluorescence - Anti-NFkB Inducing Kinase NIK antibody (ab19144)

ICC/IF image of ab19144 stained HeLa cells. The cells were 100% methanol fixed (5 min) and then incubated in 1%BSA / 10% normal goat serum / 0.3M glycine in 0.1% PBS-Tween for 1h to permeabilise the cells and block non-specific protein-protein interactions. The cells were then incubated with the antibody (ab19144, 1µg/ml) overnight at +4°C. The secondary antibody (green) was Alexa Fluor® 488 goat anti-rabbit IgG (H+L) used at a 1/1000 dilution for 1h. Alexa Fluor® 594 WGA was used to label plasma membranes (red) at a 1/200 dilution for 1h. DAPI was used to stain the cell nuclei (blue) at a concentration of 1.43µM.



Immunohistochemistry (Formalin/PFA-fixed paraffin-embedded sections) - Anti-NFkB Inducing Kinase NIK antibody (ab19144)

IHC image of ab19144 staining in human cervix formalin fixed paraffin embedded tissue section, performed on a Leica Bond™ system using the standard protocol F. The section was pre-treated using heat mediated antigen retrieval with sodium citrate buffer (pH6, epitope retrieval solution 1) for 20 mins. The section was then incubated with ab19144, 5µg/ml, for 15 mins at room temperature and detected using an HRP conjugated compact polymer system. DAB was used as the chromogen. The section was then counterstained with haematoxylin and mounted with DPX.

For other IHC staining systems (automated and non-automated) customers should optimize variable parameters such as antigen retrieval conditions, primary antibody concentration and antibody incubation times.

Please note: All products are "FOR RESEARCH USE ONLY. NOT FOR USE IN DIAGNOSTIC PROCEDURES"

Our Abpromise to you: Quality guaranteed and expert technical support

- Replacement or refund for products not performing as stated on the datasheet
- Valid for 12 months from date of delivery
- Response to your inquiry within 24 hours

- We provide support in Chinese, English, French, German, Japanese and Spanish
- Extensive multi-media technical resources to help you
- We investigate all quality concerns to ensure our products perform to the highest standards

If the product does not perform as described on this datasheet, we will offer a refund or replacement. For full details of the Abpromise, please visit <https://www.abcam.com/abpromise> or contact our technical team.

Terms and conditions

- Guarantee only valid for products bought direct from Abcam or one of our authorized distributors