

## Product datasheet

# Anti-Nicotinic Acetylcholine Receptor alpha 7 antibody ab216485

★★★★★ [5 Abreviews](#) [13 References](#) [9 Images](#)

### Overview

<b>Product name</b>	Anti-Nicotinic Acetylcholine Receptor alpha 7 antibody
<b>Description</b>	Rabbit polyclonal to Nicotinic Acetylcholine Receptor alpha 7
<b>Host species</b>	Rabbit
<b>Tested applications</b>	<b>Suitable for:</b> IHC-P, WB, ICC/IF
<b>Species reactivity</b>	<b>Reacts with:</b> Mouse, Rat, Human
<b>Immunogen</b>	Synthetic peptide within Human Nicotinic Acetylcholine Receptor alpha 7 aa 450 to the C-terminus conjugated to keyhole limpet haemocyanin. The exact immunogen sequence used to generate this antibody is proprietary information. If additional detail on the immunogen is needed to determine the suitability of the antibody for your needs, please <b><a href="#">contact</a></b> our Scientific Support team to discuss your requirements. Database link: <b><a href="#">P36544</a></b>

 [Run BLAST with](#)

 [Run BLAST with](#)

<b>Positive control</b>	ICC/IF: HEK 293T cells. IHC-P: Mouse brain tissues, rat adrenal gland and human kidney tissue. WB: mouse brain lysates, mouse lymph node lysates, mouse cerebrum lysates, mouse adrenal gland lysates, mouse placenta lysates, mouse lung lysates, mouse spleen lysates, mouse thymus lysates, human SH-SY5Y cell lysates, human U-87 MG cell lysates, human U251 cell lysates, rat cerebrum lysates, rat adrenal gland lysates, rat testis lysates and human HepG2 cell lysates.
-------------------------	---

<b>General notes</b>	<p>The Life Science industry has been in the grips of a reproducibility crisis for a number of years. Abcam is leading the way in addressing this with our range of recombinant monoclonal antibodies and knockout edited cell lines for gold-standard validation. Please check that this product meets your needs before purchasing.</p> <p>If you have any questions, special requirements or concerns, please send us an inquiry and/or contact our Support team ahead of purchase. Recommended alternatives for this product can be found below, along with publications, customer reviews and Q&amp;As</p>
----------------------	---

### Properties

<b>Form</b>	Liquid
<b>Storage instructions</b>	Shipped at 4°C. Store at +4°C short term (1-2 weeks). Upon delivery aliquot. Store at -20°C long term. Avoid freeze / thaw cycle.

<b>Storage buffer</b>	pH: 7.40 Preservative: 0.02% Proclin 300 Constituents: 50% Glycerol (glycerin, glycerine), 1% BSA, 48.98% TBS, 1X
<b>Purity</b>	Protein A purified
<b>Clonality</b>	Polyclonal
<b>Isotype</b>	IgG

## Applications

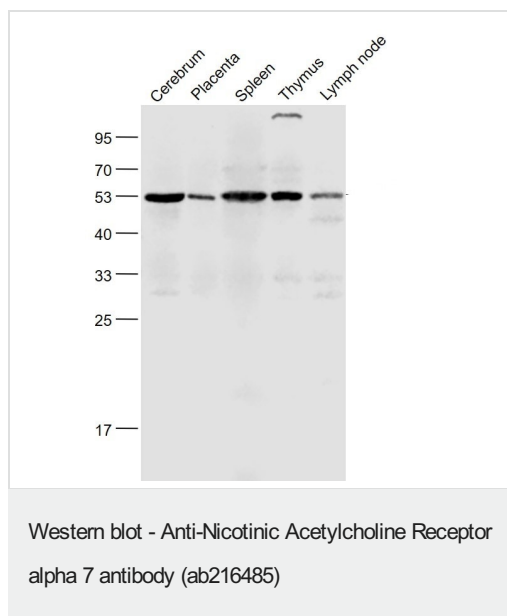
**The Abpromise guarantee** Our **Abpromise guarantee** covers the use of ab216485 in the following tested applications. The application notes include recommended starting dilutions; optimal dilutions/concentrations should be determined by the end user.

Application	Abreviews	Notes
IHC-P		1/100 - 1/500. Perform heat mediated antigen retrieval with citrate buffer pH 6 before commencing with IHC staining protocol. When using a fluorescent probe the recommended dilution is 1/50 – 1/200.
WB	★★★★★ (3)	1/100 - 1/1000. Predicted molecular weight: 56 kDa.
ICC/IF	★★★★★ (1)	1/500.

## Target

<b>Function</b>	After binding acetylcholine, the AChR responds by an extensive change in conformation that affects all subunits and leads to opening of an ion-conducting channel across the plasma membrane. The channel is blocked by alpha-bungarotoxin.
<b>Sequence similarities</b>	Belongs to the ligand-gated ion channel (TC 1.A.9) family. Acetylcholine receptor (TC 1.A.9.1) subfamily. Alpha-7/CHRNA7 sub-subfamily.
<b>Cellular localization</b>	Cell junction > synapse > postsynaptic cell membrane. Cell membrane.

## Images



**All lanes :** Anti-Nicotinic Acetylcholine Receptor alpha 7 antibody (ab216485) at 1/1000 dilution

**Lane 1 :** Rat Cerebrum lysates

**Lane 2 :** Mouse Placenta lysates

**Lane 3 :** Mouse Spleen lysates

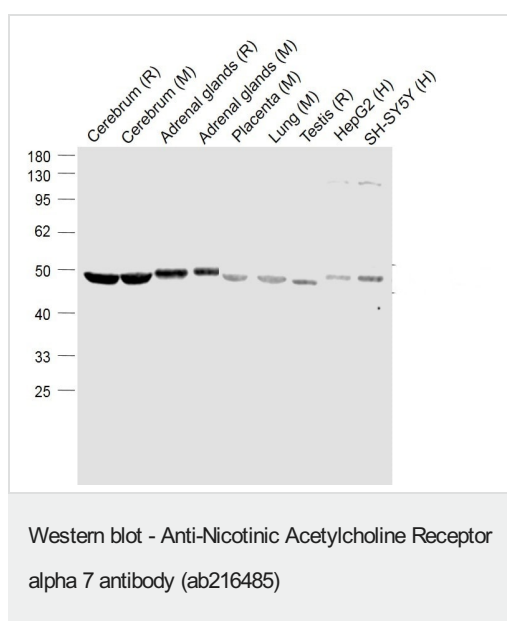
**Lane 4 :** Mouse Thymus lysates

**Lane 5 :** Mouse Lymph node lysates

Lysates/proteins at 1/1000 dilution per lane.

**Predicted band size:** 56 kDa

Probed with Anti-Nicotinic Acetylcholine Receptor alpha 7 antibody, Unconjugated (ab216485) at 1:1000 dilution and 4°C overnight incubation. Followed by conjugated secondary antibody incubation at 1:20000 for 60 min at 37°C.



**All lanes :** Anti-Nicotinic Acetylcholine Receptor alpha 7 antibody (ab216485) at 1/1000 dilution

**Lane 1 :** Rat Cerebrum lysates at 1/1000 dilution

**Lane 2 :** Mouse Cerebrum lysates at 1/1000 dilution

**Lane 3 :** Rat Adrenal gland lysates at 1/1000 dilution

**Lane 4 :** Mouse Adrenal gland lysates at 1/1000 dilution

**Lane 5 :** Mouse Placenta lysates at 1/1000 dilution

**Lane 6 :** Mouse Lung lysates at 1/1000 dilution

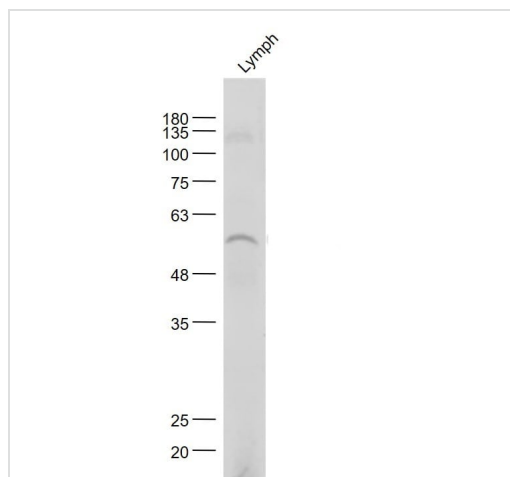
**Lane 7 :** Rat Testis lysates at 1/1000 dilution

**Lane 8 :** Human HepG2 cell lysates at 1/1000 dilution

**Lane 9 :** Human SH-SY5Y cell lysates at 1/1000 dilution

**Predicted band size:** 56 kDa

Probed with Anti-Nicotinic Acetylcholine Receptor alpha 7 Antibody, Unconjugated (ab216485) at 1:1000 dilution and 4°C overnight incubation. Followed by conjugated secondary antibody incubation at 1:20000 for 60 min at 37°C.

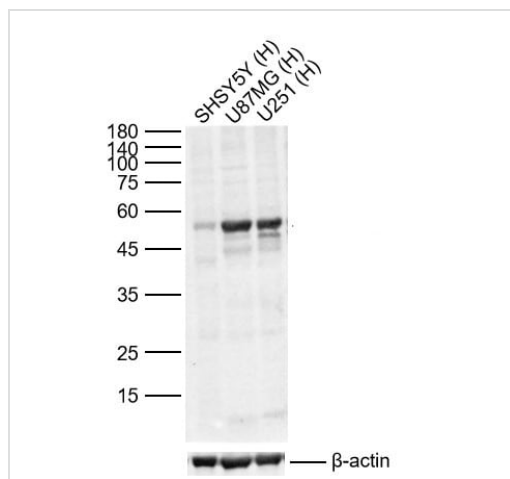


Western blot - Anti-Nicotinic Acetylcholine Receptor alpha 7 antibody (ab216485)

Anti-Nicotinic Acetylcholine Receptor alpha 7 antibody (ab216485) at 1/1000 dilution + Mouse lymph node lysates at 1/1000 dilution

**Predicted band size:** 56 kDa

Mouse lymph node lysates probed with Anti-Nicotinic Acetylcholine Receptor alpha 7 Antibody, Unconjugated (AB216485) at 1:1000 dilution and 4°C overnight incubation. Followed by conjugated secondary antibody incubation at 1:20000 for 60 min at 37°C.



Western blot - Anti-Nicotinic Acetylcholine Receptor alpha 7 antibody (ab216485)

**All lanes :** Anti-Nicotinic Acetylcholine Receptor alpha 7 antibody (ab216485) at 1/1000 dilution

**Lane 1 :** Human SH-SY5Y Cell Lysates

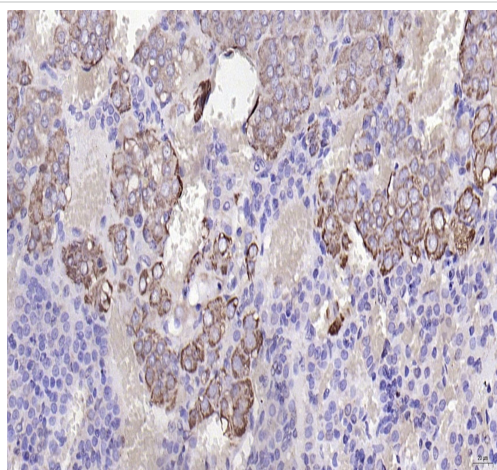
**Lane 2 :** Human U-87 MG Cell Lysates

**Lane 3 :** Human U251 Cell Lysates

Lysates/proteins at 1/1000 dilution per lane.

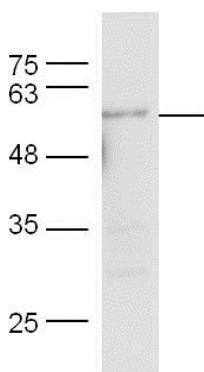
**Predicted band size:** 56 kDa

Probed with Anti-Nicotinic Acetylcholine Receptor alpha 7 polyclonal Antibody, unconjugated (AB216485) at 1:1000 dilution and 4°C overnight incubation. Followed by conjugated secondary antibody incubation at 1:20000 for 60 min at 37°C.



Immunohistochemistry (Formalin/PFA-fixed paraffin-embedded sections) - Anti-Nicotinic Acetylcholine Receptor alpha 7 antibody (ab216485)

Immunohistochemical analysis of paraformaldehyde-fixed and paraffin embedded rat adrenal gland labeling Nicotinic Acetylcholine Receptor alpha 7 using ab216485 at 1/200, followed by secondary detection and DAB staining.



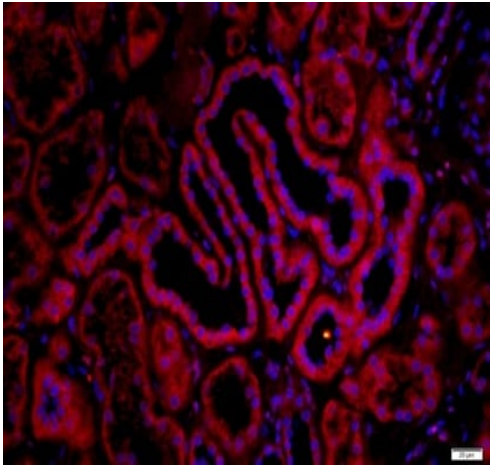
Western blot - Anti-Nicotinic Acetylcholine Receptor alpha 7 antibody (ab216485)

Anti-Nicotinic Acetylcholine Receptor alpha 7 antibody (ab216485) at 1/300 dilution + mouse brain lysate

### Secondary

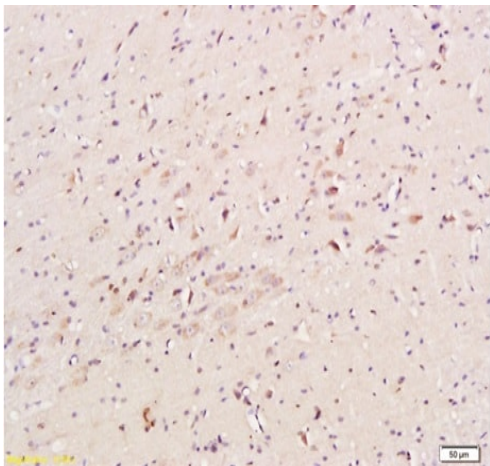
Goat Anti-Rabbit IgG Antibody (H+L), HRP Conjugated at 1/500 dilution

**Predicted band size:** 56 kDa



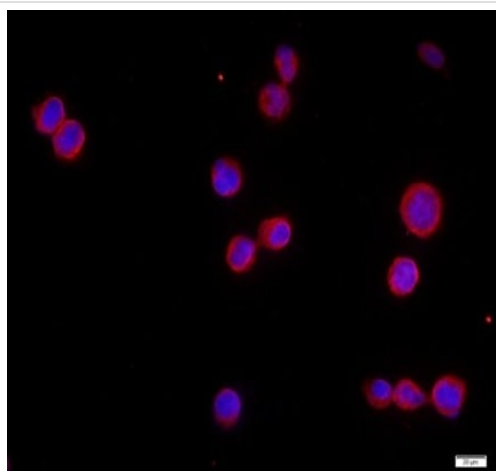
Immunohistochemistry (Formalin/PFA-fixed paraffin-embedded sections) - Anti-Nicotinic Acetylcholine Receptor alpha 7 antibody (ab216485)

Immunohistochemical analysis of formalin-fixed and paraffin embedded human kidney tissue labeling Nicotinic Acetylcholine Receptor alpha 7 using ab216485 at 1/200, followed by Cy3 conjugated secondary Goat Anti-Rabbit IgG. DAPI was used to stain the cell nuclei.



Immunohistochemistry (Formalin/PFA-fixed paraffin-embedded sections) - Anti-Nicotinic Acetylcholine Receptor alpha 7 antibody (ab216485)

Immunohistochemical analysis of formalin-fixed and paraffin embedded mouse brain tissue labeling Nicotinic Acetylcholine Receptor alpha 7 using ab216485 at 1/200, followed by secondary detection and DAB staining.



Immunocytochemistry/ Immunofluorescence - Anti-Nicotinic Acetylcholine Receptor alpha 7 antibody (ab216485)

Immunofluorescent analysis of HEK293 cells labeling Nicotinic Acetylcholine Receptor alpha 7 using ab216485 at 1/500 dilution, followed by secondary antibody Goat Anti-Rabbit IgG, Cy3 conjugated. DAPI staining of nuclei is shown too.

**Please note:** All products are "FOR RESEARCH USE ONLY. NOT FOR USE IN DIAGNOSTIC PROCEDURES"

### Our Abpromise to you: Quality guaranteed and expert technical support

---

- Replacement or refund for products not performing as stated on the datasheet
- Valid for 12 months from date of delivery
- Response to your inquiry within 24 hours
- We provide support in Chinese, English, French, German, Japanese and Spanish
- Extensive multi-media technical resources to help you
- We investigate all quality concerns to ensure our products perform to the highest standards

If the product does not perform as described on this datasheet, we will offer a refund or replacement. For full details of the Abpromise, please visit <https://www.abcam.com/abpromise> or contact our technical team.

### Terms and conditions

---

- Guarantee only valid for products bought direct from Abcam or one of our authorized distributors