




## Product datasheet

### Anti-Niemann Pick C1 antibody ab177233

1 Image

#### Overview

<b>Product name</b>	Anti-Niemann Pick C1 antibody
<b>Description</b>	Goat polyclonal to Niemann Pick C1
<b>Host species</b>	Goat
<b>Tested applications</b>	<b>Suitable for:</b> WB
<b>Species reactivity</b>	<b>Reacts with:</b> Human <b>Predicted to work with:</b> Pig 
<b>Immunogen</b>	Synthetic peptide corresponding to Human Niemann Pick C1 aa 1040-1053 (internal sequence) (Cysteine residue). Sequence: TYHTVLQTSADFID  Database link: <a href="#">NP_000262.2</a>  <a href="#">Run BLAST with</a>  <a href="#">Run BLAST with</a>
<b>Positive control</b>	HEK293 cell lysate.
<b>General notes</b>	<p>The Life Science industry has been in the grips of a reproducibility crisis for a number of years. Abcam is leading the way in addressing this with our range of recombinant monoclonal antibodies and knockout edited cell lines for gold-standard validation. Please check that this product meets your needs before purchasing.</p> <p>If you have any questions, special requirements or concerns, please send us an inquiry and/or contact our Support team ahead of purchase. Recommended alternatives for this product can be found below, along with publications, customer reviews and Q&amp;As</p>

#### Properties

<b>Form</b>	Liquid
<b>Storage instructions</b>	Shipped at 4°C. Store at +4°C short term (1-2 weeks). Upon delivery aliquot. Store at -20°C long term. Avoid freeze / thaw cycle.
<b>Storage buffer</b>	pH: 7.30 Preservative: 0.02% Sodium azide Constituents: 99% Tris buffered saline, 0.5% BSA
<b>Purity</b>	Immunogen affinity purified

<b>Purification notes</b>	ab177233 was purified from goat serum by ammonium sulphate precipitation followed by antigen affinity chromatography using the immunizing peptide.
<b>Clonality</b>	Polyclonal
<b>Isotype</b>	IgG

## Applications

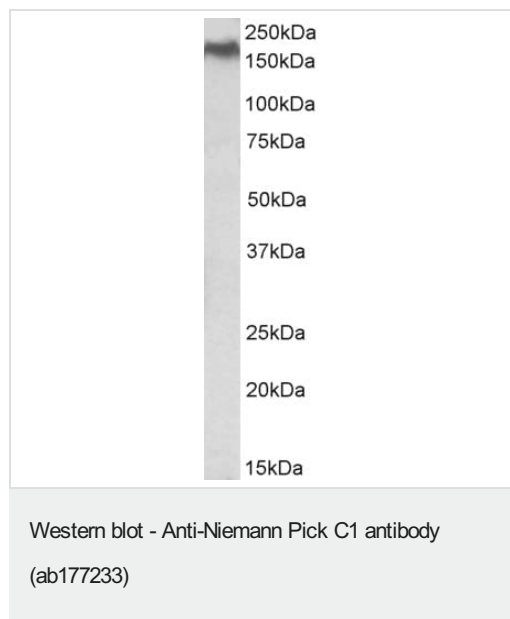
**The Abpromise guarantee** Our **Abpromise guarantee** covers the use of ab177233 in the following tested applications. The application notes include recommended starting dilutions; optimal dilutions/concentrations should be determined by the end user.

Application	Abreviews	Notes
<b>WB</b>		Use a concentration of 0.5 - 1.5 µg/ml. Detects a band of approximately 170 kDa (predicted molecular weight: 142 kDa). 1 hour primary incubation is recommended for this product.

## Target

<b>Function</b>	Involved in the intracellular trafficking of cholesterol. May play a role in vesicular trafficking in glia, a process that may be crucial for maintaining the structural and functional integrity of nerve terminals.
<b>Involvement in disease</b>	Defects in NPC1 are the cause of Niemann-Pick disease type C1 (NPDC1) [MIM:257220]. A lysosomal storage disorder that affects the viscera and the central nervous system. It is due to defective intracellular processing and transport of low-density lipoprotein derived cholesterol. It causes accumulation of cholesterol in lysosomes, with delayed induction of cholesterol homeostatic reactions. Niemann-Pick disease type C1 has a highly variable clinical phenotype. Clinical features include variable hepatosplenomegaly and severe progressive neurological dysfunction such as ataxia, dystonia and dementia. The age of onset can vary from infancy to late adulthood. An allelic variant of Niemann-Pick disease type C1 is found in people with Nova Scotia ancestry. Patients with the Nova Scotian clinical variant are less severely affected.
<b>Sequence similarities</b>	Belongs to the patched family. Contains 1 SSD (sterol-sensing) domain.
<b>Domain</b>	A cysteine-rich N-terminal domain and a C-terminal domain containing a di-leucine motif necessary for lysosomal targeting are critical for mobilization of cholesterol from lysosomes.
<b>Post-translational modifications</b>	Glycosylated.
<b>Cellular localization</b>	Late endosome membrane. Lysosome membrane.

## Images



Anti-Niemann Pick C1 antibody (ab177233) at 0.5 µg/ml + HEK293 cell lysate (in RIPA buffer) at 35 µg

Developed using the ECL technique.

**Predicted band size:** 142 kDa

**Observed band size:** 170 kDa

Primary incubation was 1 hour.

**Please note:** All products are "FOR RESEARCH USE ONLY. NOT FOR USE IN DIAGNOSTIC PROCEDURES"

### Our Abpromise to you: Quality guaranteed and expert technical support

---

- Replacement or refund for products not performing as stated on the datasheet
- Valid for 12 months from date of delivery
- Response to your inquiry within 24 hours
- We provide support in Chinese, English, French, German, Japanese and Spanish
- Extensive multi-media technical resources to help you
- We investigate all quality concerns to ensure our products perform to the highest standards

If the product does not perform as described on this datasheet, we will offer a refund or replacement. For full details of the Abpromise, please visit <https://www.abcam.com/abpromise> or contact our technical team.

### Terms and conditions

---

- Guarantee only valid for products bought direct from Abcam or one of our authorized distributors