


Anti-Ninein/NIN antibody - Centrosome Marker ab4447

★★★★★ [2 Abreviews](#) [31 References](#) [2 Images](#)

Overview

Product name	Anti-Ninein/NIN antibody - Centrosome Marker
Description	Rabbit polyclonal to Ninein/NIN - Centrosome Marker
Host species	Rabbit
Tested applications	Suitable for: ICC/IF
Species reactivity	Reacts with: Human Predicted to work with: Mouse 
Immunogen	Fusion protein corresponding to Human Ninein/NIN. The region used shows good homology to Mouse Ninein/NIN aa 1-550.
Positive control	ICC/IF: HeLa cells
General notes	<p>The centrosomal protein ninein has been identified as a microtubule minus end capping and centriole anchoring protein, but its true physiological function remains to be determined. At mitosis, ninein has been observed in association with the mitotic spindle as well as at the centrosomes.</p> <p>The Life Science industry has been in the grips of a reproducibility crisis for a number of years. Abcam is leading the way in addressing this with our range of recombinant monoclonal antibodies and knockout edited cell lines for gold-standard validation. Please check that this product meets your needs before purchasing.</p> <p>If you have any questions, special requirements or concerns, please send us an inquiry and/or contact our Support team ahead of purchase. Recommended alternatives for this product can be found below, along with publications, customer reviews and Q&As</p>

Properties

Form	Liquid
Storage instructions	Shipped at 4°C. Store at +4°C short term (1-2 weeks). Upon delivery aliquot. Store at -20°C or -80°C. Avoid freeze / thaw cycle.
Storage buffer	Preservative: 0.02% Sodium azide
Purity	Protein A purified
Primary antibody notes	The centrosomal protein ninein has been identified as a microtubule minus end capping and centriole anchoring protein, but its true physiological function remains to be determined. At mitosis, ninein has been observed in association with the mitotic spindle as well as at the

	centrosomes.
Clonality	Polyclonal
Isotype	IgG

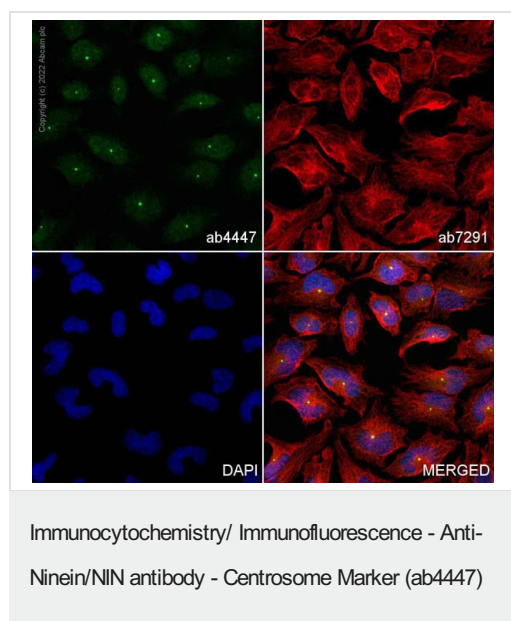
Applications

The Abpromise guarantee Our **Abpromise guarantee** covers the use of ab4447 in the following tested applications. The application notes include recommended starting dilutions; optimal dilutions/concentrations should be determined by the end user.

Application	Abreviews	Notes
ICC/IF	★★★★★ (2)	1/500.

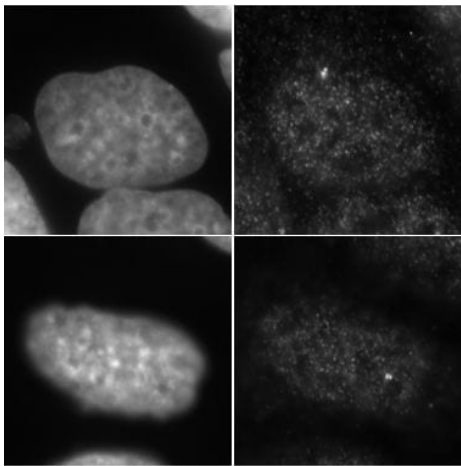
Target

Images



ab4447 staining Ninein in HeLa cells. The cells were fixed with 4% PFA (10 mins), permeabilized with 0.1% Triton X-100 for 5 minutes and then blocked with 1% BSA/10% normal goat serum/0.3M glycine in 0.1% PBS-Tween for 1h. The cells were then incubated overnight at +4°C with ab4447 (shown in green) at 0.1µg/ml and **ab7291** (shown in red), Mouse monoclonal to alpha Tubulin, at 1µg/ml. The secondary antibodies used were **ab150081**, Alexa Fluor® 488 Goat anti-Rabbit IgG (H+L), and **ab150120**, Alexa Fluor® 594 Goat Anti-Mouse IgG (H&L) used at a 1/1000 dilution for 1h at room temperature. Nuclear DNA was labelled with DAPI (shown in blue).

Image was acquired with a high-content analyser (Operetta CLS, Perkin Elmer) and a maximum intensity projection of confocal sections is shown.



Immunocytochemistry/ Immunofluorescence - Anti-Ninein/NIN antibody - Centrosome Marker (ab4447)
Gordon Chan, University of Alberta

IF using ab4447 to detect Ninein/NIN in MCF7 cells (human).

The left hand panels are DAPI stained nuclei. The right hand panels are the same nuclei stained for Ninein/NIN.

ab4447 was used at 1/1000.

Ninein/NIN shows nuclear and centrosome staining, which is expected from the literature.

Please note: All products are "FOR RESEARCH USE ONLY. NOT FOR USE IN DIAGNOSTIC PROCEDURES"

Our Abpromise to you: Quality guaranteed and expert technical support

- Replacement or refund for products not performing as stated on the datasheet
- Valid for 12 months from date of delivery
- Response to your inquiry within 24 hours
- We provide support in Chinese, English, French, German, Japanese and Spanish
- Extensive multi-media technical resources to help you
- We investigate all quality concerns to ensure our products perform to the highest standards

If the product does not perform as described on this datasheet, we will offer a refund or replacement. For full details of the Abpromise, please visit <https://www.abcam.com/abpromise> or contact our technical team.

Terms and conditions

- Guarantee only valid for products bought direct from Abcam or one of our authorized distributors