

Product datasheet

Anti-NINL antibody ab121110

[1 References](#) [2 Images](#)

Overview

Product name	Anti-NINL antibody
Description	Rabbit polyclonal to NINL
Host species	Rabbit
Tested applications	Suitable for: ICC/IF, IHC-P
Species reactivity	Reacts with: Human
Immunogen	Recombinant fragment, corresponding to amino acids 682-787 of Human NINL.
Positive control	Human cerebellum tissue. ICC/IF: U2-OS cells
General notes	<p>The Life Science industry has been in the grips of a reproducibility crisis for a number of years. Abcam is leading the way in addressing this with our range of recombinant monoclonal antibodies and knockout edited cell lines for gold-standard validation. Please check that this product meets your needs before purchasing.</p> <p>If you have any questions, special requirements or concerns, please send us an inquiry and/or contact our Support team ahead of purchase. Recommended alternatives for this product can be found below, along with publications, customer reviews and Q&As</p>

Properties

Form	Liquid
Storage instructions	Shipped at 4°C. Upon delivery aliquot and store at -20°C. Avoid freeze / thaw cycles.
Storage buffer	pH: 7.20 Preservative: 0.02% Sodium azide Constituents: 59% PBS, 40% Glycerol (glycerin, glycerine)
Purity	Immunogen affinity purified
Clonality	Polyclonal
Isotype	IgG

Applications

The Abpromise guarantee Our **Abpromise guarantee** covers the use of ab121110 in the following tested applications. The application notes include recommended starting dilutions; optimal dilutions/concentrations should be determined by the end user.

Application	Abreviews	Notes
ICC/IF		1/0.25 - 1/2. Fixation/Permeabilization: PFA/Triton X-100
IHC-P		1/50 - 1/200. Perform heat mediated antigen retrieval with citrate buffer pH 6 before commencing with IHC staining protocol.

Target

Function

Involved in the microtubule organization in interphase cells. Overexpression induces the fragmentation of the Golgi, and causes lysosomes to disperse toward the cell periphery; it also interferes with mitotic spindle assembly. May play a role in ovarian carcinogenesis.

Tissue specificity

Expressed in KYSE150 esophageal carcinoma, HeLa cervical carcinoma and U2OS osteosarcoma cells. Expression is regulated in a cell cycle-dependent manner and peaks during G2/M phase (at protein level). Expressed in fetal heart, skeletal muscle, liver, lung and cochlea, and in adult brain, testis, kidney and retina.

Sequence similarities

Contains 4 EF-hand domains.

Domain

The KEN and D (destructive) boxes are required for the cell cycle-controlled NINL degradation by the APC/C pathway.

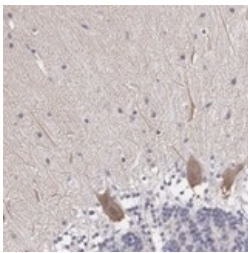
Post-translational modifications

Phosphorylated by PLK1 which disrupts its centrosome association and interaction with gamma-tubulin.
Ubiquitinated by the APC/C complex leading to its degradation.

Cellular localization

Cytoplasm > cytoskeleton > centrosome. Cytoplasm. In interphase cells, NINL is transported to the centrosomes by the dynein-dynactin motor complex. During centrosome maturation, PLK1 directly phosphorylates NINL resulting in its release into the cytoplasm.

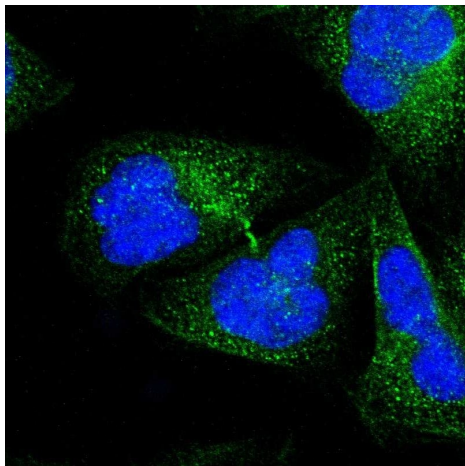
Images



ab121101 at 1/100 dilution staining NINL in Paraffin-embedded Human Cerebellum tissue by Immunohistochemistry.

Note: moderate cytoplasmic positivity in Purkinje cells.

Immunohistochemistry (Formalin/PFA-fixed paraffin-embedded sections) - Anti-NINL antibody (ab121101)



Immunocytochemistry/ Immunofluorescence analysis of U-2 OS labeling NINL with ab121110. The image shows localization to cytosol & cytokinetic bridge.

Fixation/Permeabilization: PFA/Triton X-100

Immunocytochemistry/ Immunofluorescence - Anti-NINL antibody (ab121110)

Please note: All products are "FOR RESEARCH USE ONLY. NOT FOR USE IN DIAGNOSTIC PROCEDURES"

Our Abpromise to you: Quality guaranteed and expert technical support

- Replacement or refund for products not performing as stated on the datasheet
- Valid for 12 months from date of delivery
- Response to your inquiry within 24 hours
- We provide support in Chinese, English, French, German, Japanese and Spanish
- Extensive multi-media technical resources to help you
- We investigate all quality concerns to ensure our products perform to the highest standards

If the product does not perform as described on this datasheet, we will offer a refund or replacement. For full details of the Abpromise, please visit <https://www.abcam.com/abpromise> or contact our technical team.

Terms and conditions

- Guarantee only valid for products bought direct from Abcam or one of our authorized distributors