


Product datasheet

Anti-NIPA (phospho S354) antibody ab63557

[2 References](#) [1 Image](#)

Overview

Product name	Anti-NIPA (phospho S354) antibody
Description	Rabbit polyclonal to NIPA (phospho S354)
Host species	Rabbit
Tested applications	Suitable for: WB
Species reactivity	Reacts with: African green monkey Predicted to work with: Mouse, Rat 
Immunogen	Synthetic peptide corresponding to Human NIPA (phospho S354). Database link: Q86WB0
General notes	<p>The Life Science industry has been in the grips of a reproducibility crisis for a number of years. Abcam is leading the way in addressing this with our range of recombinant monoclonal antibodies and knockout edited cell lines for gold-standard validation. Please check that this product meets your needs before purchasing.</p> <p>If you have any questions, special requirements or concerns, please send us an inquiry and/or contact our Support team ahead of purchase. Recommended alternatives for this product can be found below, along with publications, customer reviews and Q&As</p>

Properties

Form	Liquid
Storage instructions	Shipped at 4°C. Store at -20°C. Stable for 12 months at -20°C.
Storage buffer	pH: 7.40 Preservative: 0.02% Sodium azide Constituents: PBS, 50% Glycerol (glycerin, glycerine), 0.87% Sodium chloride Without Mg ²⁺ and Ca ²⁺
Purity	Immunogen affinity purified
Purification notes	Purified from rabbit antiserum by affinity chromatography using epitope specific phosphopeptide. The antibody against non-phosphopeptide was removed by chromatography using non-phosphopeptide corresponding to the phosphorylation site.
Clonality	Polyclonal
Isotype	IgG

Applications

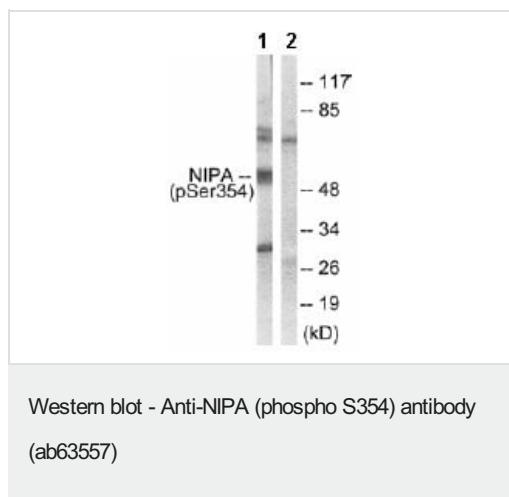
The Abpromise guarantee Our **Abpromise guarantee** covers the use of ab63557 in the following tested applications. The application notes include recommended starting dilutions; optimal dilutions/concentrations should be determined by the end user.

Application	Abreviews	Notes
WB		1/500 - 1/1000. Detects a band of approximately 55 kDa (predicted molecular weight: 55 kDa).

Target

Function	Essential component of an SCF-type E3 ligase complex, SCF(NIPA), a complex that controls mitotic entry by mediating ubiquitination and subsequent degradation of cyclin B1 (CCNB1). Its cell-cycle-dependent phosphorylation regulates the assembly of the SCF(NIPA) complex, restricting CCNB1 ubiquitination activity to interphase. Its inactivation results in nuclear accumulation of CCNB1 in interphase and premature mitotic entry. May have an antiapoptotic role in NPM-ALK-mediated signaling events.
Tissue specificity	Widely expressed. Highly expressed in heart, skeletal muscle and testis. Expressed in brain, placenta, lung, kidney, liver, pancreas, spleen, thymus, prostate, ovary small intestine and colon. Weakly or not expressed in leukocytes.
Pathway	Protein modification; protein ubiquitination.
Sequence similarities	Contains 1 C3HC-type zinc finger.
Developmental stage	Weakly expressed in G0/G1 phases, abundant during S and G2/M phases, and strongly decreases thereafter.
Domain	The F-box-like region is required for the interaction with SKP1.
Post-translational modifications	Phosphorylated. Phosphorylated on Ser residues at G2/M phase, but not during S and G0 phases. May also be weakly phosphorylated on Tyr residues. Ser-354 phosphorylation, a major site during the course of cell-cycle-dependent phosphorylation, results in its dissociation from the SCF(NIPA) complex, thereby preventing CCNB1 degradation leading to mitotic entry.
Cellular localization	Nucleus.

Images



All lanes : Anti-NIPA (phospho S354) antibody (ab63557) at 1/500 dilution

Lane 1 : extracts from COS7 cells, treated with HU (2nM, 24hours)

Lane 2 : extracts from COS7 cells, treated with HU (2nM, 24hours) with immunizing phosphopeptide at 10 µg

Lysates/proteins at 30 µg per lane.

Predicted band size: 55 kDa

Observed band size: 55 kDa

Additional bands at: 30 kDa, 75 kDa. We are unsure as to the identity of these extra bands.

Please note: All products are "FOR RESEARCH USE ONLY. NOT FOR USE IN DIAGNOSTIC PROCEDURES"

Our Abpromise to you: Quality guaranteed and expert technical support

- Replacement or refund for products not performing as stated on the datasheet
- Valid for 12 months from date of delivery
- Response to your inquiry within 24 hours
- We provide support in Chinese, English, French, German, Japanese and Spanish
- Extensive multi-media technical resources to help you
- We investigate all quality concerns to ensure our products perform to the highest standards

If the product does not perform as described on this datasheet, we will offer a refund or replacement. For full details of the Abpromise, please visit <https://www.abcam.com/abpromise> or contact our technical team.

Terms and conditions

- Guarantee only valid for products bought direct from Abcam or one of our authorized distributors