




Product datasheet

Anti-NKG2A antibody ab169285

3 Images

Overview

Product name	Anti-NKG2A antibody
Description	Rabbit polyclonal to NKG2A
Host species	Rabbit
Tested applications	Suitable for: WB
Species reactivity	Reacts with: Mouse, Human Predicted to work with: Chimpanzee, Rhesus monkey 
Immunogen	Recombinant full length protein within Human NKG2A aa 1-250. The exact immunogen sequence used to generate this antibody is proprietary information. If additional detail on the immunogen is needed to determine the suitability of the antibody for your needs, please <u>contact</u> our Scientific Support team to discuss your requirements. <div>  Run BLAST with  Run BLAST with </div>
Positive control	NKG2A transfected 293T cell lysate; Human spleen and Mouse testis lysates.
General notes	<p>The Life Science industry has been in the grips of a reproducibility crisis for a number of years. Abcam is leading the way in addressing this with our range of recombinant monoclonal antibodies and knockout edited cell lines for gold-standard validation. Please check that this product meets your needs before purchasing.</p> <p>If you have any questions, special requirements or concerns, please send us an inquiry and/or contact our Support team ahead of purchase. Recommended alternatives for this product can be found below, along with publications, customer reviews and Q&As</p>

Properties

Form	Liquid
Storage instructions	Shipped at 4°C. Store at +4°C short term (1-2 weeks). Upon delivery aliquot. Store at -20°C long term.
Storage buffer	pH: 7.4 Constituent: 100% PBS
Purity	Protein A purified
Clonality	Polyclonal
Isotype	IgG

Applications

The Abpromise guarantee

Our **Abpromise guarantee** covers the use of ab169285 in the following tested applications.

The application notes include recommended starting dilutions; optimal dilutions/concentrations should be determined by the end user.

Application	Abreviews	Notes
WB		Use a concentration of 1 µg/ml. Predicted molecular weight: 26 kDa.

Target

Function

Plays a role as a receptor for the recognition of MHC class I HLA-E molecules by NK cells and some cytotoxic T-cells.

Tissue specificity

Natural killer cells.

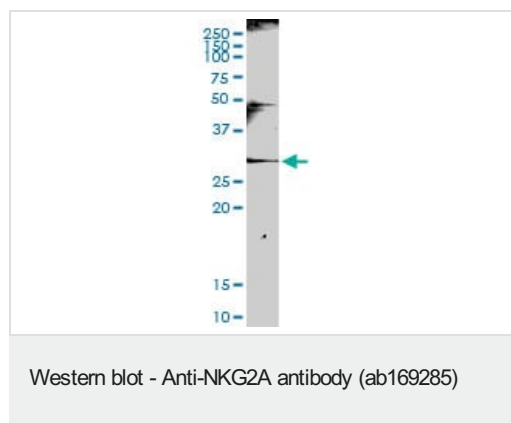
Sequence similarities

Contains 1 C-type lectin domain.

Cellular localization

Membrane.

Images



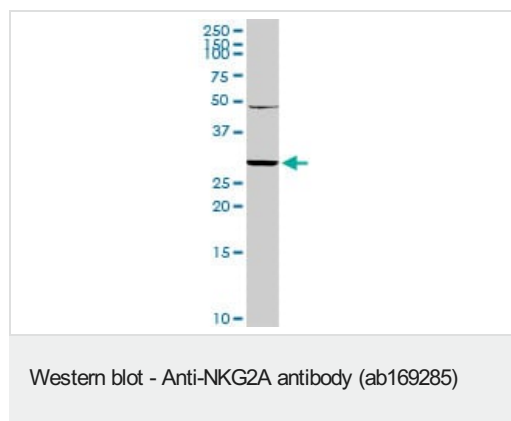
Anti-NKG2A antibody (ab169285) at 1 µg/ml + Human spleen lysate at 50 µg

Secondary

Goat Anti-Rabbit IgG (H+L)-HRP at 1/7500 dilution

Developed using the ECL technique.

Predicted band size: 26 kDa



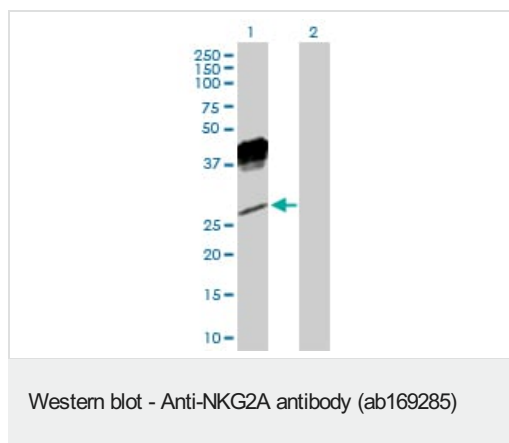
Anti-NKG2A antibody (ab169285) at 1 µg/ml + Mouse testis lysate at 50 µg

Secondary

Goat Anti-Rabbit IgG (H+L)-HRP at 1/7500 dilution

Developed using the ECL technique.

Predicted band size: 26 kDa



All lanes : Anti-NKG2A antibody (ab169285) at 1 µg/ml

Lane 1 : NKG2A transfected 293T cell lysate

Lane 2 : Non-transfected 293T cell lysate

Lysates/proteins at 15 µl per lane.

Secondary

All lanes : Goat Anti-Rabbit IgG (H+L)-HRP at 1/7500 dilution

Developed using the ECL technique.

Predicted band size: 26 kDa

Please note: All products are "FOR RESEARCH USE ONLY. NOT FOR USE IN DIAGNOSTIC PROCEDURES"

Our Abpromise to you: Quality guaranteed and expert technical support

- Replacement or refund for products not performing as stated on the datasheet
- Valid for 12 months from date of delivery
- Response to your inquiry within 24 hours
- We provide support in Chinese, English, French, German, Japanese and Spanish
- Extensive multi-media technical resources to help you
- We investigate all quality concerns to ensure our products perform to the highest standards

If the product does not perform as described on this datasheet, we will offer a refund or replacement. For full details of the Abpromise, please visit <https://www.abcam.com/abpromise> or contact our technical team.

Terms and conditions

- Guarantee only valid for products bought direct from Abcam or one of our authorized distributors