


Product datasheet

Anti-NLK antibody ab26050

★★★★★ [2 Abreviews](#) [8 References](#) [3 Images](#)

Overview

Product name	Anti-NLK antibody
Description	Rabbit polyclonal to NLK
Host species	Rabbit
Tested applications	Suitable for: ICC/IF, IHC-P
Species reactivity	Reacts with: Mouse, Human Predicted to work with: Rat, Chicken, Dog, Xenopus laevis 
Immunogen	Synthetic peptide conjugated to KLH derived from within residues 450 to the C-terminus of Human NLK. Read Abcam's proprietary immunogen policy (Peptide available as ab26986 .)
Positive control	This antibody gave a positive signal in the following tissues: Formalin Fixed Paraffin Embedded Mouse Lung Normal; Formalin Fixed Paraffin Embedded Mouse Brain Normal. This antibody gave a positive signal in the following cell types: U-87 MG.
General notes	<p>The Life Science industry has been in the grips of a reproducibility crisis for a number of years. Abcam is leading the way in addressing this with our range of recombinant monoclonal antibodies and knockout edited cell lines for gold-standard validation. Please check that this product meets your needs before purchasing.</p> <p>If you have any questions, special requirements or concerns, please send us an inquiry and/or contact our Support team ahead of purchase. Recommended alternatives for this product can be found below, along with publications, customer reviews and Q&As</p>

Properties

Form	Liquid
Storage instructions	Shipped at 4°C. Store at +4°C short term (1-2 weeks). Upon delivery aliquot. Store at -20°C or -80°C. Avoid freeze / thaw cycle.
Storage buffer	<p>pH: 7.40</p> <p>Preservative: 0.02% Sodium azide</p> <p>Constituent: PBS</p> <p>Batches of this product that have a concentration < 1mg/ml may have BSA added as a stabilising agent. If you would like information about the formulation of a specific lot, please contact our scientific support team who will be happy to help.</p>

Purity	Immunogen affinity purified
Clonality	Polyclonal
Isotype	IgG

Applications

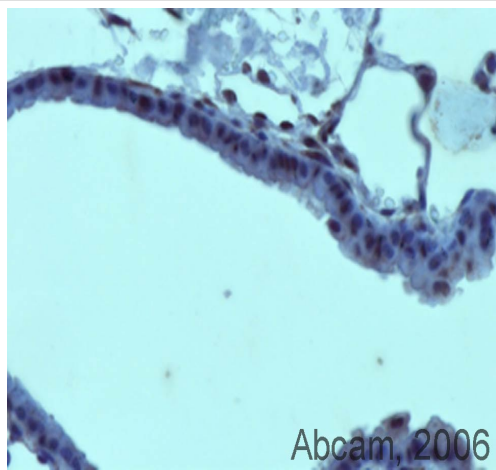
The Abpromise guarantee Our **Abpromise guarantee** covers the use of ab26050 in the following tested applications. The application notes include recommended starting dilutions; optimal dilutions/concentrations should be determined by the end user.

Application	Abreviews	Notes
ICC/IF		Use a concentration of 1 µg/ml.
IHC-P		Use at an assay dependent concentration.

Target

Function	Role in cell fate determination, required for differentiation of bone marrow stromal cells. Acts downstream of MAP3K7 and HIPK2 to negatively regulate the canonical Wnt/beta-catenin signaling pathway and the phosphorylation and destruction of the MYB transcription factor. May suppress a wide range of transcription factors by phosphorylation of the coactivator, CREBBP (By similarity). Involved in TGFbeta-mediated mesoderm induction, acting downstream of MAP3K7/TAK1 to phosphorylate STAT3.
Sequence similarities	Belongs to the protein kinase superfamily. CMGC Ser/Thr protein kinase family. MAP kinase subfamily. Contains 1 protein kinase domain.
Post-translational modifications	Dually phosphorylated on Thr-303 and Tyr-305, which activates the enzyme.
Cellular localization	Nucleus. Cytoplasm. Predominantly nuclear. A smaller fraction is cytoplasmic.

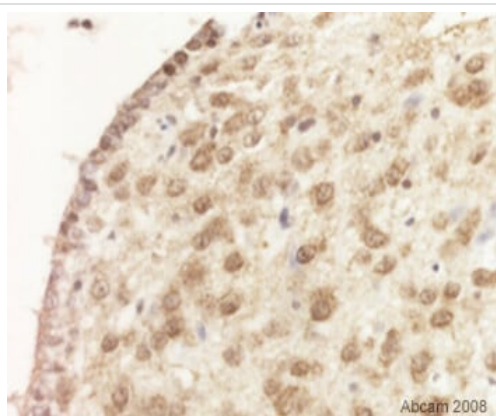
Images



Immunohistochemistry (Formalin/PFA-fixed paraffin-embedded sections) - Anti-NLK antibody (ab26050)

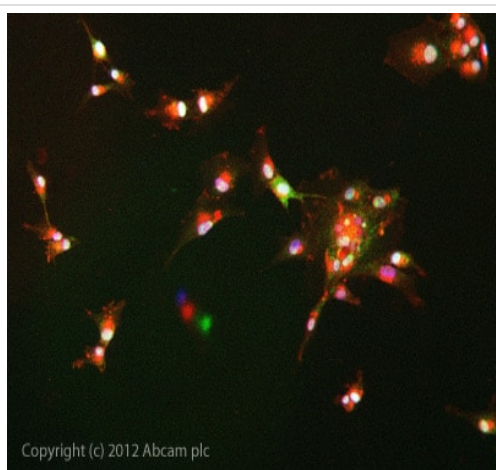
This image is courtesy of Melissa R. Mazan, DVM

Anti-NLK was used in standard Vector ABC protocol on paraffin embedded mouse lung with the following modifications: HIER with Vector antigen unmasking solution for 25 minutes at 98C. Used a 1:100 dilution in PBS/Triton-X 4C overnight.



Immunohistochemistry (Formalin/PFA-fixed paraffin-embedded sections) - Anti-NLK antibody (ab26050)

Adult mouse brain fixed in 10% neutral buffered formulin. Antigen retrieval was performed using Tris-EDTA pH 9.0. The tissue was incubated with ab26050 at a concentration of 2.5µg/ml for 16 hours at 4°C. Nuclear staining can be clearly seen.



Immunocytochemistry/ Immunofluorescence - Anti-NLK antibody (ab26050)

ICC/IF image of ab26050 stained U87-MG cells. The cells were 4% formaldehyde fixed (10 min) and then incubated in 1%BSA / 10% normal goat serum / 0.3M glycine in 0.1% PBS-Tween for 1h to permeabilise the cells and block non-specific protein-protein interactions. The cells were then incubated with the antibody ab26050 at 1µg/ml overnight at +4°C. The secondary antibody (green) was DyLight® 488 goat anti- rabbit ([ab96899](#)) IgG (H+L) used at a 1/1000 dilution for 1h. Alexa Fluor® 594 WGA was used to label plasma membranes (red) at a 1/200 dilution for 1h. DAPI was used to stain the cell nuclei (blue) at a concentration of 1.43µM.

Please note: All products are "FOR RESEARCH USE ONLY. NOT FOR USE IN DIAGNOSTIC PROCEDURES"

Our Abpromise to you: Quality guaranteed and expert technical support

- Replacement or refund for products not performing as stated on the datasheet
- Valid for 12 months from date of delivery
- Response to your inquiry within 24 hours

- We provide support in Chinese, English, French, German, Japanese and Spanish
- Extensive multi-media technical resources to help you
- We investigate all quality concerns to ensure our products perform to the highest standards

If the product does not perform as described on this datasheet, we will offer a refund or replacement. For full details of the Abpromise, please visit <https://www.abcam.com/abpromise> or contact our technical team.

Terms and conditions

- Guarantee only valid for products bought direct from Abcam or one of our authorized distributors