

Product datasheet

Anti-NLRP10 antibody - N-terminal ab198810

[1 Image](#)

Overview

Product name	Anti-NLRP10 antibody - N-terminal
Description	Rabbit polyclonal to NLRP10 - N-terminal
Host species	Rabbit
Tested applications	Suitable for: WB
Species reactivity	Reacts with: Mouse
Immunogen	Synthetic peptide within Human NLRP10 (N terminal). The exact sequence is proprietary. Gene Accession: NP_789791. Database link: Q86W26
Positive control	Mouse heart and skeletal muscle tissue lysates.
General notes	<p>The Life Science industry has been in the grips of a reproducibility crisis for a number of years. Abcam is leading the way in addressing this with our range of recombinant monoclonal antibodies and knockout edited cell lines for gold-standard validation. Please check that this product meets your needs before purchasing.</p> <p>If you have any questions, special requirements or concerns, please send us an inquiry and/or contact our Support team ahead of purchase. Recommended alternatives for this product can be found below, along with publications, customer reviews and Q&As</p>

Properties

Form	Liquid
Storage instructions	Shipped at 4°C. Store at +4°C short term (1-2 weeks). Upon delivery aliquot. Store at -20°C long term. Avoid freeze / thaw cycle.
Storage buffer	pH: 7.4 Preservative: 0.05% Sodium azide Constituents: 49% PBS, 50% Glycerol (glycerin, glycerine)
Purity	Immunogen affinity purified
Clonality	Polyclonal
Isotype	IgG

Applications

The Abpromise guarantee

Our **Abpromise guarantee** covers the use of ab198810 in the following tested applications.

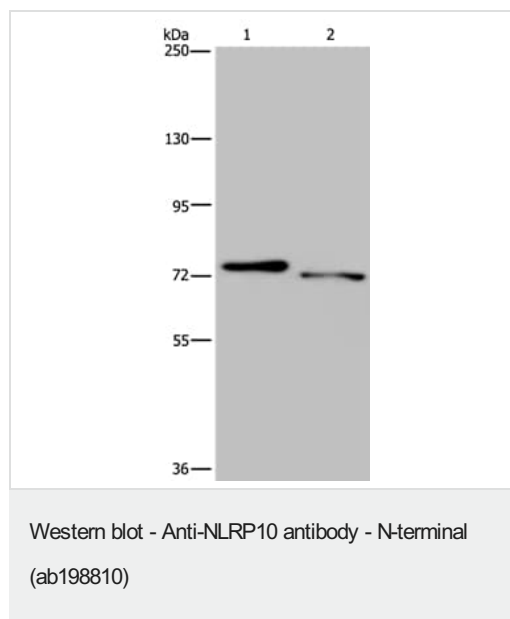
The application notes include recommended starting dilutions; optimal dilutions/concentrations should be determined by the end user.

Application	Abreviews	Notes
WB		1/500 - 1/2000. Predicted molecular weight: 75 kDa.

Target

Function	Inhibits CASP1/caspase-1-dependent IL1B secretion and PYCARD-mediated apoptosis, but not that induced by FAS or BID.
Tissue specificity	Widely expressed with highest levels in heart, brain and skeletal muscle.
Sequence similarities	Belongs to the NLRP family. Contains 1 DAPIN domain. Contains 1 NACHT domain.

Images



All lanes : Anti-NLRP10 antibody - N-terminal (ab198810) at 1/300 dilution

Lane 1 : mouse heart tissue lysate

Lane 2 : mouse skeletal muscle tissue lysate

Lysates/proteins at 40 µg per lane.

Predicted band size: 75 kDa

Exposure time: 1 minute

Gel: 8%SDS-PAGE

Please note: All products are "FOR RESEARCH USE ONLY. NOT FOR USE IN DIAGNOSTIC PROCEDURES"

Our Abpromise to you: Quality guaranteed and expert technical support

- Replacement or refund for products not performing as stated on the datasheet
- Valid for 12 months from date of delivery
- Response to your inquiry within 24 hours
- We provide support in Chinese, English, French, German, Japanese and Spanish

- Extensive multi-media technical resources to help you
- We investigate all quality concerns to ensure our products perform to the highest standards

If the product does not perform as described on this datasheet, we will offer a refund or replacement. For full details of the Abpromise, please visit <https://www.abcam.com/abpromise> or contact our technical team.

Terms and conditions

- Guarantee only valid for products bought direct from Abcam or one of our authorized distributors