

Product datasheet

Anti-NLRX1 antibody ab105412

[3 References](#) [3 Images](#)

Overview

Product name	Anti-NLRX1 antibody
Description	Rabbit polyclonal to NLRX1
Host species	Rabbit
Specificity	At least two isoforms of NLRX1 are known to exist; ab105412 will recognize both. This antibody is predicted to not crossreact with other NLRP family members.
Tested applications	Suitable for: ICC/IF, WB, IHC-P
Species reactivity	Reacts with: Rat
Immunogen	A 14 amino acid peptide near the amino terminus of Human NLRX1 (NP_078894).
Positive control	Rat spleen tissue lysate
General notes	<p>The Life Science industry has been in the grips of a reproducibility crisis for a number of years. Abcam is leading the way in addressing this with our range of recombinant monoclonal antibodies and knockout edited cell lines for gold-standard validation. Please check that this product meets your needs before purchasing.</p> <p>If you have any questions, special requirements or concerns, please send us an inquiry and/or contact our Support team ahead of purchase. Recommended alternatives for this product can be found below, along with publications, customer reviews and Q&As</p>

Properties

Form	Liquid
Storage instructions	Shipped at 4°C. Store at +4°C.
Storage buffer	pH: 7.2 Preservative: 0.02% Sodium azide Constituent: PBS
Purity	Immunogen affinity purified
Clonality	Polyclonal
Isotype	IgG

Applications

The Abpromise guarantee

Our **Abpromise guarantee** covers the use of ab105412 in the following tested applications.

The application notes include recommended starting dilutions; optimal dilutions/concentrations should be determined by the end user.

Application	Abreviews	Notes
ICC/IF		Use a concentration of 20 µg/ml.
WB		Use a concentration of 1 - 2 µg/ml. Predicted molecular weight: 108 kDa.
IHC-P		Use a concentration of 10 µg/ml.

Target

Function

Participates in antiviral signaling. Acts as a negative regulator of MAVS-mediated antiviral responses, through the inhibition of the virus-induced RLH (RIG-like helicase)-MAVS interaction (PubMed:18200010). Has no inhibitory function on NF-Kappa-B and type 1 interferon signaling pathways, but enhances NF-Kappa-B and JUN N-terminal kinase dependent signaling through the production of reactive oxygen species (PubMed:18219313).

Tissue specificity

Ubiquitously expressed. Strongest expression in mammary gland, heart and muscle. Detected in HELA, 293T, THP-1, HL60, RAJI, and JURKAT cell lines (at protein level).

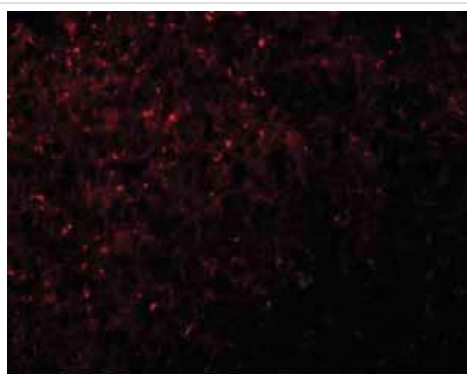
Sequence similarities

Belongs to the NLRP family.
Contains 7 LRR (leucine-rich) repeats.
Contains 1 NACHT domain.

Cellular localization

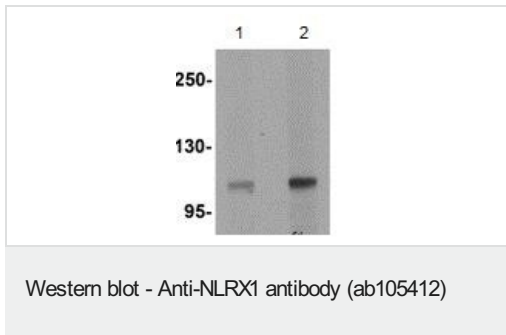
Mitochondrion outer membrane.

Images



Immunofluorescence of NLRX1 in rat spleen tissue with ab105412 at 20 µg/mL.

Immunocytochemistry/ Immunofluorescence - Anti-NLRX1 antibody (ab105412)

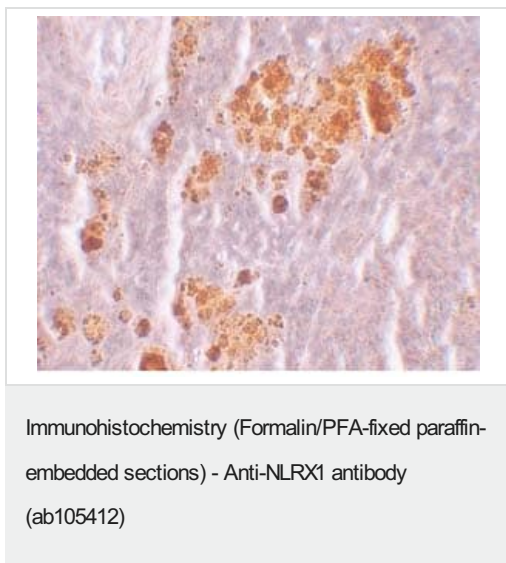


Lane 1 : Anti-NLRX1 antibody (ab105412) at 1 µg/ml

Lane 2 : Anti-NLRX1 antibody (ab105412) at 2 µg/ml

All lanes : rat spleen tissue cell lysate

Predicted band size: 108 kDa



Immunohistochemistry of NLRX1 in rat spleen tissue with ab105412 at 10 µg/ml.

Please note: All products are "FOR RESEARCH USE ONLY. NOT FOR USE IN DIAGNOSTIC PROCEDURES"

Our Abpromise to you: Quality guaranteed and expert technical support

- Replacement or refund for products not performing as stated on the datasheet
- Valid for 12 months from date of delivery
- Response to your inquiry within 24 hours
- We provide support in Chinese, English, French, German, Japanese and Spanish
- Extensive multi-media technical resources to help you
- We investigate all quality concerns to ensure our products perform to the highest standards

If the product does not perform as described on this datasheet, we will offer a refund or replacement. For full details of the Abpromise, please visit <https://www.abcam.com/abpromise> or contact our technical team.

Terms and conditions

- Guarantee only valid for products bought direct from Abcam or one of our authorized distributors