


Product datasheet

Anti-NOLC1 antibody [EPR14896] ab184550

Recombinant RabMAb

[5 References](#) [5 Images](#)

Overview

Product name	Anti-NOLC1 antibody [EPR14896]
Description	Rabbit monoclonal [EPR14896] to NOLC1
Host species	Rabbit
Tested applications	Suitable for: Flow Cyt (Intra), WB, IHC-P, ICC/IF
Species reactivity	Reacts with: Human Predicted to work with: Mouse 
Immunogen	Synthetic peptide. This information is proprietary to Abcam and/or its suppliers.
Positive control	K562 and HeLa cell lysates, Human prostate tissue, K562 and HeLa cells.
General notes	<p>This product is a recombinant monoclonal antibody, which offers several advantages including:</p> <ul style="list-style-type: none">- High batch-to-batch consistency and reproducibility- Improved sensitivity and specificity- Long-term security of supply- Animal-free production <p>For more information see here.</p> <p>Our RabMAb[®] technology is a patented hybridoma-based technology for making rabbit monoclonal antibodies. For details on our patents, please refer to RabMAb[®] patents.</p>

Properties

Form	Liquid
Storage instructions	Shipped at 4°C. Store at +4°C short term (1-2 weeks). Upon delivery aliquot. Store at -20°C long term. Avoid freeze / thaw cycle.
Storage buffer	pH: 7.2 Preservative: 0.01% Sodium azide Constituents: 40% Glycerol (glycerin, glycerine), 0.05% BSA, 59% PBS
Purity	Protein A purified
Clonality	Monoclonal
Clone number	EPR14896
Isotype	IgG

Applications

The Abpromise guarantee

Our **Abpromise guarantee** covers the use of ab184550 in the following tested applications.

The application notes include recommended starting dilutions; optimal dilutions/concentrations should be determined by the end user.

Application	Abreviews	Notes
Flow Cyt (Intra)		1/300. ab172730 - Rabbit monoclonal IgG, is suitable for use as an isotype control with this antibody.
WB		1/10000 - 1/50000. Detects a band of approximately 110 kDa (predicted molecular weight: 74 kDa).
IHC-P		1/50 - 1/100.
ICC/IF		1/500.

Target

Function

Related to nucleogenesis, may play a role in the maintenance of the fundamental structure of the fibrillar center and dense fibrillar component in the nucleolus. It has intrinsic GTPase and ATPase activities. May play an important role in transcription catalyzed by RNA polymerase I.

Sequence similarities

Contains 1 LisH domain.

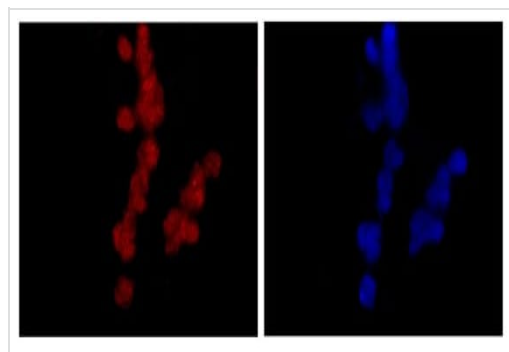
Post-translational modifications

Undergoes rapid and massive phosphorylation/dephosphorylation cycles on CK2 and PKC sites. There is evidence suggesting that CDK1 kinase phosphorylates p130 at the M-phase.

Cellular localization

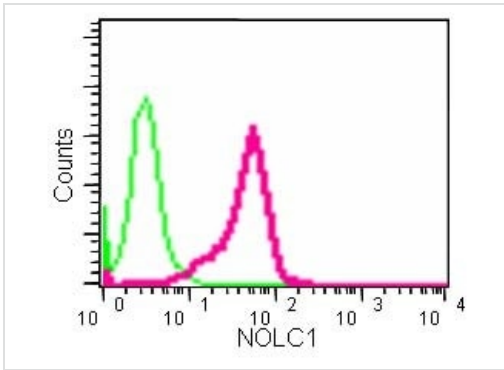
Nucleus > nucleolus. Cytoplasm. Shuttles between the nucleolus and the cytoplasm. At telophase it begins to assemble into granular-like pre-nucleolar bodies which are subsequently relocated to nucleoli at the early G1-phase.

Images



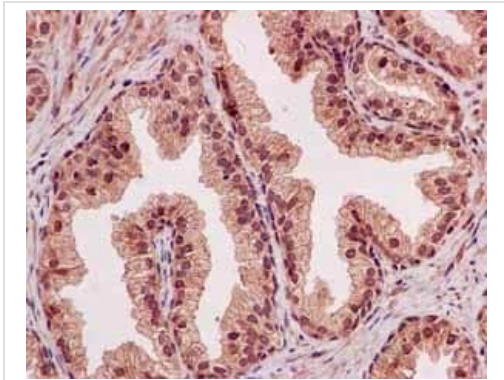
Immunofluorescence staining of -20 μ m Acetone fixed K562 cells labeling NOLC1 using ab184550 at a 1/500 dilution (Red). Goat anti rabbit IgG (Alexa Fluor® 555) secondary at a 1/200 dilution. Counterstained with Dapi (blue).

Immunocytochemistry/ Immunofluorescence - Anti-NOLC1 antibody [EPR14896] (ab184550)



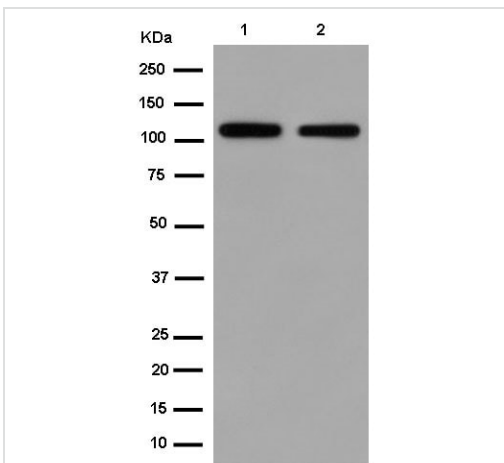
Flow Cytometry (Intracellular) - Anti-NOLC1 antibody [EPR14896] (ab184550)

Intracellular flow cytometric analysis of 2% paraformaldehyde fixed HeLa cells labeling NOLC1 with ab184550 at a 1/300 dilution (red) or a rabbit IgG isotype control (green), followed by secondary Goat anti rabbit IgG (FITC) at 1/150 dilution.



Immunohistochemistry (Formalin/PFA-fixed paraffin-embedded sections) - Anti-NOLC1 antibody [EPR14896] (ab184550)

Immunohistochemical analysis of paraffin-embedded Human prostate tissue labeling NOLC1 at a 1/100 dilution, counterstained with Hematoxylin.



Western blot - Anti-NOLC1 antibody [EPR14896] (ab184550)

All lanes : Anti-NOLC1 antibody [EPR14896] (ab184550) at 1/50000 dilution

Lane 1 : K562 cell lysate

Lane 2 : HeLa cell lysate

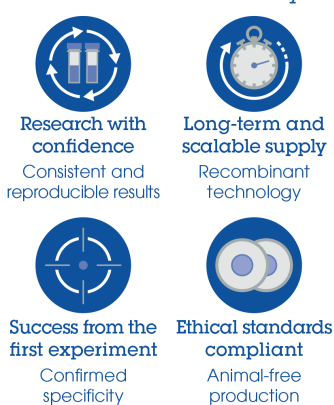
Lysates/proteins at 20 µg per lane.

Secondary

All lanes : Goat Anti-Rabbit IgG, (H+L), Peroxidase conjugated at 1/1000 dilution

Predicted band size: 74 kDa

Why choose a recombinant antibody?



- Research with confidence**
Consistent and reproducible results
- Long-term and scalable supply**
Recombinant technology
- Success from the first experiment**
Confirmed specificity
- Ethical standards compliant**
Animal-free production

Anti-NOLC1 antibody [EPR14896] (ab184550)

Please note: All products are "FOR RESEARCH USE ONLY. NOT FOR USE IN DIAGNOSTIC PROCEDURES"

Our Abpromise to you: Quality guaranteed and expert technical support

- Replacement or refund for products not performing as stated on the datasheet
- Valid for 12 months from date of delivery
- Response to your inquiry within 24 hours
- We provide support in Chinese, English, French, German, Japanese and Spanish
- Extensive multi-media technical resources to help you
- We investigate all quality concerns to ensure our products perform to the highest standards

If the product does not perform as described on this datasheet, we will offer a refund or replacement. For full details of the Abpromise, please visit <https://www.abcam.com/abpromise> or contact our technical team.

Terms and conditions

- Guarantee only valid for products bought direct from Abcam or one of our authorized distributors