

Product datasheet

Anti-Noradrenaline transporter antibody ab41559

[1 Abreviews](#) [4 References](#) [2 Images](#)

Overview

Product name	Anti-Noradrenaline transporter antibody
Description	Rabbit polyclonal to Noradrenaline transporter
Host species	Rabbit
Specificity	Ab41559 does not cross react with dopamine and serotonin transporters.
Tested applications	Suitable for: WB, ICC/IF
Species reactivity	Reacts with: Rat, Human
Immunogen	The noradrenaline transporter antibodies were generated against unique N-terminal peptides that are unique to the noradrenaline transporter protein. The antibodies are raised utilizing linear, multiple antigenic peptides or cyclic peptide methodology.

General notes

The Life Science industry has been in the grips of a reproducibility crisis for a number of years. Abcam is leading the way in addressing this with our range of recombinant monoclonal antibodies and knockout edited cell lines for gold-standard validation. Please check that this product meets your needs before purchasing.

If you have any questions, special requirements or concerns, please send us an inquiry and/or contact our Support team ahead of purchase. Recommended alternatives for this product can be found below, along with publications, customer reviews and Q&As

Properties

Form	Liquid
Storage instructions	Shipped at 4°C. Upon delivery aliquot and store at -20°C or -80°C. Avoid repeated freeze / thaw cycles.
Storage buffer	pH: 7.80 Preservative: 0.02% Sodium azide Constituents: 0.5% BSA, Tris glycine, 30% Glycerol
Purity	Immunogen affinity purified
Clonality	Polyclonal
Isotype	IgG

Applications

The Abpromise guarantee

Our **Abpromise guarantee** covers the use of ab41559 in the following tested applications.

The application notes include recommended starting dilutions; optimal dilutions/concentrations should be determined by the end user.

Application	Abreviews	Notes
WB		1/500 - 1/1000. Detects a band of approximately 80 kDa (predicted molecular weight: 70 kDa).
ICC/IF		Use a concentration of 5 µg/ml.

Target

Function

Amine transporter. Terminates the action of noradrenaline by its high affinity sodium-dependent reuptake into presynaptic terminals.

Involvement in disease

Orthostatic intolerance

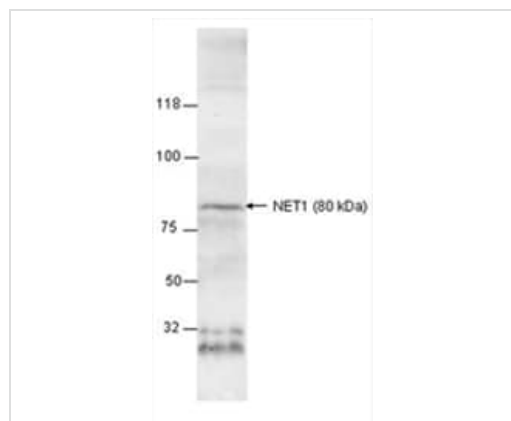
Sequence similarities

Belongs to the sodium:neurotransmitter symporter (SNF) (TC 2.A.22) family. SLC6A2 subfamily.

Cellular localization

Membrane.

Images



Western blot - Anti-Noradrenaline transporter antibody (ab41559)

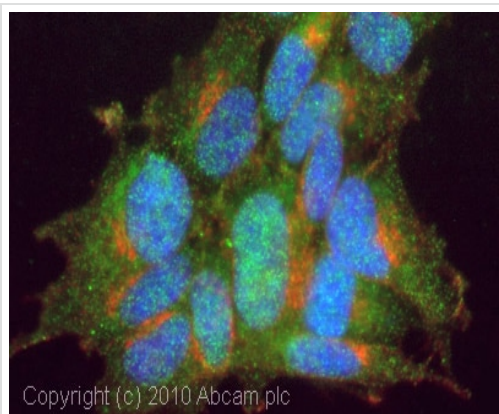
Anti-Noradrenaline transporter antibody (ab41559) at 1/250 dilution + rat brain cortical membrane cell lysate at 70 µg

Predicted band size: 70 kDa

Observed band size: 80 kDa

Additional bands at: 28 kDa, 32 kDa. We are unsure as to the identity of these extra bands.

Western Blot with rat brain cortical membranes



Immunocytochemistry/ Immunofluorescence - Anti-Noradrenaline transporter antibody (ab41559)

ICC/IF image of ab41559 stained SHSY5Y cells. The cells were 4% formaldehyde fixed (10 min) and then incubated in 1%BSA / 10% normal goat serum / 0.3M glycine in 0.1% PBS-Tween for 1h to permeabilise the cells and block non-specific protein-protein interactions. The cells were then incubated with the antibody (ab41559, 5µg/ml) overnight at +4°C. The secondary antibody (green) was Alexa Fluor® 488 goat anti-rabbit IgG (H+L) used at a 1/1000 dilution for 1h. Alexa Fluor® 594 WGA was used to label plasma membranes (red) at a 1/200 dilution for 1h. DAPI was used to stain the cell nuclei (blue) at a concentration of 1.43µM.

Please note: All products are "FOR RESEARCH USE ONLY. NOT FOR USE IN DIAGNOSTIC PROCEDURES"

Our Abpromise to you: Quality guaranteed and expert technical support

- Replacement or refund for products not performing as stated on the datasheet
- Valid for 12 months from date of delivery
- Response to your inquiry within 24 hours
- We provide support in Chinese, English, French, German, Japanese and Spanish
- Extensive multi-media technical resources to help you
- We investigate all quality concerns to ensure our products perform to the highest standards

If the product does not perform as described on this datasheet, we will offer a refund or replacement. For full details of the Abpromise, please visit <https://www.abcam.com/abpromise> or contact our technical team.

Terms and conditions

- Guarantee only valid for products bought direct from Abcam or one of our authorized distributors