




## Product datasheet

### Anti-NPEPPS antibody ab77643

1 Image

#### Overview

<b>Product name</b>	Anti-NPEPPS antibody
<b>Description</b>	Goat polyclonal to NPEPPS
<b>Host species</b>	Goat
<b>Tested applications</b>	<b>Suitable for:</b> WB
<b>Species reactivity</b>	<b>Reacts with:</b> Human <b>Predicted to work with:</b> Mouse, Rat, Horse, Cow, Dog, Xenopus laevis, Chimpanzee, Macaque monkey 
<b>Immunogen</b>	Synthetic peptide: C-KRDAESIHQYLLQRK , corresponding to C terminal amino acids 899-913 of Human NPEPPS (NP_006301.3)  <a href="#">Run BLAST with</a>  <a href="#">Run BLAST with</a>
<b>Positive control</b>	Human Brain (Cerebral Cortex) lysate.
<b>General notes</b>	<p>The Life Science industry has been in the grips of a reproducibility crisis for a number of years. Abcam is leading the way in addressing this with our range of recombinant monoclonal antibodies and knockout edited cell lines for gold-standard validation. Please check that this product meets your needs before purchasing.</p> <p>If you have any questions, special requirements or concerns, please send us an inquiry and/or contact our Support team ahead of purchase. Recommended alternatives for this product can be found below, along with publications, customer reviews and Q&amp;As</p>

#### Properties

<b>Form</b>	Liquid
<b>Storage instructions</b>	Shipped at 4°C. Upon delivery aliquot and store at -20°C or -80°C. Avoid repeated freeze / thaw cycles.
<b>Storage buffer</b>	pH: 7.30 Preservative: 0.02% Sodium azide Constituents: 0.5% BSA, Tris buffered saline
<b>Purity</b>	Immunogen affinity purified
<b>Purification notes</b>	Purified from goat serum by ammonium sulphate precipitation followed by antigen affinity chromatography using the immunizing peptide.

Clonality	Polyclonal
Isotype	IgG

## Applications

**The Abpromise guarantee** Our **Abpromise guarantee** covers the use of ab77643 in the following tested applications. The application notes include recommended starting dilutions; optimal dilutions/concentrations should be determined by the end user.

Application	Abreviews	Notes
WB		

**Application notes** peptide ELISA: Use at an assay dependent dilution. Detection limit dilution: 1/4000  
WB: Use at a concentration of 0.2 - 0.5 µg/ml. Detects a band of approximately 110 kDa (predicted molecular weight: 103 kDa).

Not yet tested in other applications.  
Optimal dilutions/concentrations should be determined by the end user.

## Target

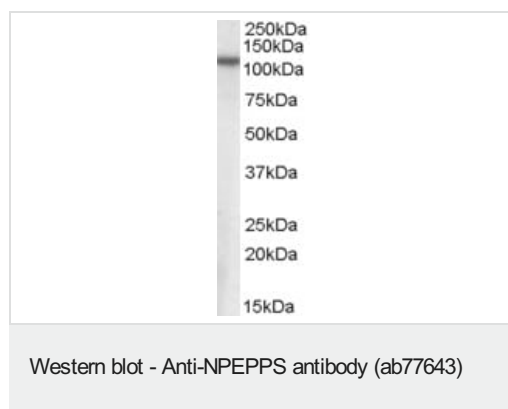
**Function** Aminopeptidase with broad substrate specificity for several peptides. Involved in proteolytic events essential for cell growth and viability. May act as regulator of neuropeptide activity. Plays a role in the antigen-processing pathway for MHC class I molecules. Involved in the N-terminal trimming of cytotoxic T-cell epitope precursors. Digests the poly-Q peptides found in many cellular proteins. Digests tau from normal brain more efficiently than tau from Alzheimer disease brain.

**Tissue specificity** Detected in liver, epithelium of renal tubules, epithelium of small and large intestine, gastric epithelial cells, and alveoli of the lung (at protein level).

**Sequence similarities** Belongs to the peptidase M1 family.

**Cellular localization** Cytoplasm > cytosol. Nucleus.

## Images



Anti-NPEPPS antibody (ab77643) at 0.3 µg/ml + Human cerebral cortex lysate in RIPA buffer at 35 µg

**Predicted band size:** 103 kDa

**Observed band size:** 110 kDa

### **Our Abpromise to you: Quality guaranteed and expert technical support**

---

- Replacement or refund for products not performing as stated on the datasheet
- Valid for 12 months from date of delivery
- Response to your inquiry within 24 hours
  
- We provide support in Chinese, English, French, German, Japanese and Spanish
- Extensive multi-media technical resources to help you
- We investigate all quality concerns to ensure our products perform to the highest standards

If the product does not perform as described on this datasheet, we will offer a refund or replacement. For full details of the Abpromise, please visit <https://www.abcam.com/abpromise> or contact our technical team.

### **Terms and conditions**

---

- Guarantee only valid for products bought direct from Abcam or one of our authorized distributors