

Product datasheet

Anti-NPTX2 antibody ab69858

[9 References](#) [4 Images](#)

Overview

Product name	Anti-NPTX2 antibody
Description	Rabbit polyclonal to NPTX2
Host species	Rabbit
Tested applications	Suitable for: ICC/IF, WB, IHC-P
Species reactivity	Reacts with: Mouse, Human
Immunogen	A 16 amino acid peptide near the center of the human NPTX2
General notes	<p>The Life Science industry has been in the grips of a reproducibility crisis for a number of years. Abcam is leading the way in addressing this with our range of recombinant monoclonal antibodies and knockout edited cell lines for gold-standard validation. Please check that this product meets your needs before purchasing.</p> <p>If you have any questions, special requirements or concerns, please send us an inquiry and/or contact our Support team ahead of purchase. Recommended alternatives for this product can be found below, along with publications, customer reviews and Q&As</p>

Properties

Form	Liquid
Storage instructions	Shipped at 4°C. Store at +4°C short term (1-2 weeks). Store at +4°C.
Storage buffer	pH: 7.2 Preservative: 0.02% Sodium azide Constituent: PBS
Purity	Immunogen affinity purified
Clonality	Polyclonal
Isotype	IgG

Applications

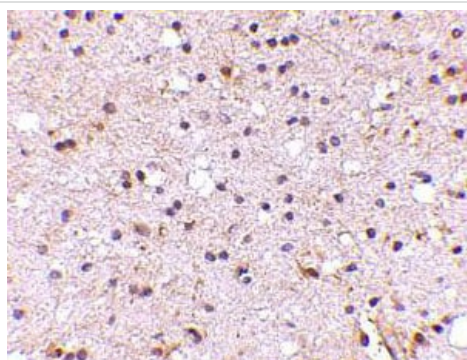
The Abpromise guarantee Our **Abpromise guarantee** covers the use of ab69858 in the following tested applications. The application notes include recommended starting dilutions; optimal dilutions/concentrations should be determined by the end user.

Application	Abreviews	Notes
ICC/IF		Use a concentration of 20 µg/ml.
WB		Use a concentration of 0.5 - 4 µg/ml. Detects a band of approximately 47 kDa (predicted molecular weight: 47 kDa).
IHC-P		Use a concentration of 5 µg/ml.

Target

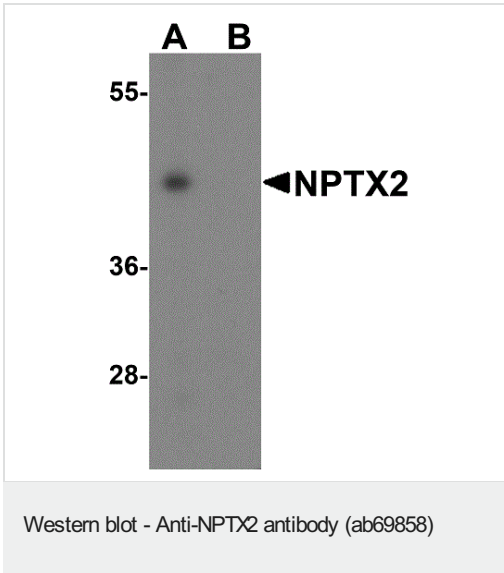
Function	Likely to play role in the modification of cellular properties that underlie long-term plasticity. Binds to agar matrix in a calcium-dependent manner.
Tissue specificity	Brain, pancreas, liver, heart and skeletal muscle. Highest levels are seen in the testis.
Sequence similarities	Contains 1 pentaxin domain.
Cellular localization	Secreted.

Images



Immunohistochemical analysis of paraffin-embedded human brain using ab69858 at 5 µg/ml. Tissue was fixed with formaldehyde and blocked with 10% serum for 1 h at RT; antigen retrieval was by heat mediation with a citrate buffer (pH6). Samples were incubated with primary antibody overnight at 4°C. A goat anti-rabbit IgG H&L (HRP) at 1/250 was used as secondary. Counter stained with Hematoxylin.

Immunohistochemistry (Formalin/PFA-fixed paraffin-embedded sections) - Anti-NPTX2 antibody (ab69858)



All lanes : Anti-NPTX2 antibody (ab69858) at 1 µg/ml

Lane 1 : Mouse Brain tissue lysate

Lane 2 : Mouse Brain tissue lysate with Blocking peptide

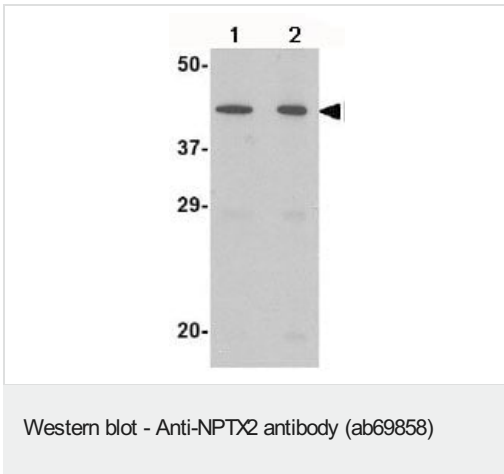
Lysates/proteins at 15 µg per lane.

Secondary

All lanes : Goat anti-rabbit IgG (HRP) at 1/10000 dilution

Predicted band size: 47 kDa

Diluting buffer: 5% NFDM/TBST.



Lane 1 : Anti-NPTX2 antibody (ab69858) at 0.5 µg

Lane 2 : Anti-NPTX2 antibody (ab69858) at 1 µg/ml

All lanes : Mouse brain tissue lysate

Lysates/proteins at 15 µg per lane.

Predicted band size: 47 kDa

Diluting buffer: 5% NFDM/TBST.

Immunocytochemistry/ Immunofluorescence - Anti-NPTX2 antibody (ab69858)

Immunofluorescent analysis of 4% paraformaldehyde fixed human brain tissue labeling NPTX2 with ab69858 at 20 µg/mL, followed by goat anti-rabbit IgG secondary antibody at 1/500 dilution (red).

Please note: All products are "FOR RESEARCH USE ONLY. NOT FOR USE IN DIAGNOSTIC PROCEDURES"

Our Abpromise to you: Quality guaranteed and expert technical support

- Replacement or refund for products not performing as stated on the datasheet
- Valid for 12 months from date of delivery
- Response to your inquiry within 24 hours
- We provide support in Chinese, English, French, German, Japanese and Spanish
- Extensive multi-media technical resources to help you

- We investigate all quality concerns to ensure our products perform to the highest standards

If the product does not perform as described on this datasheet, we will offer a refund or replacement. For full details of the Abpromise, please visit <https://www.abcam.com/abpromise> or contact our technical team.

Terms and conditions

- Guarantee only valid for products bought direct from Abcam or one of our authorized distributors