


Product datasheet

Anti-NR2E1/Tailless/TLX antibody [EPR4491] α b109179

Recombinant RabMAb

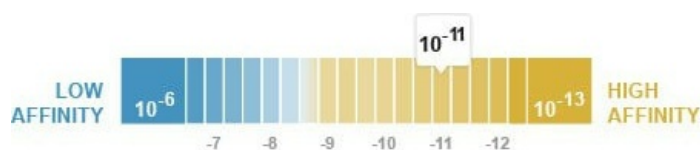
[2 References](#) [3 Images](#)

Overview

Product name	Anti-NR2E1/Tailless/TLX antibody [EPR4491]
Description	Rabbit monoclonal [EPR4491] to NR2E1/Tailless/TLX
Host species	Rabbit
Tested applications	Suitable for: WB Unsuitable for: Flow Cyt, ICC/IF, IHC-P or IP
Species reactivity	Reacts with: Human Predicted to work with: Mouse, Rat 
Immunogen	Synthetic peptide. This information is proprietary to Abcam and/or its suppliers.
Positive control	Fetal brain, Human hippocampus, SH-SY5Y and Jurkat lysates
General notes	This product is a recombinant monoclonal antibody, which offers several advantages including: <ul style="list-style-type: none"> - High batch-to-batch consistency and reproducibility - Improved sensitivity and specificity - Long-term security of supply - Animal-free production For more information see here . Our RabMAb [®] technology is a patented hybridoma-based technology for making rabbit monoclonal antibodies. For details on our patents, please refer to RabMAb[®] patents .

Properties

Form	Liquid
Storage instructions	Shipped at 4°C. Store at -20°C. Stable for 12 months at -20°C.
Dissociation constant (K_D)	$K_D = 9.30 \times 10^{-11}$ M



[Learn more about \$K_D\$](#)

Storage buffer	pH: 7.20
----------------	----------

	Preservative: 0.05% Sodium azide
	Constituents: 0.1% BSA, 40% Glycerol (glycerin, glycerine), 9.85% Tris glycine, 50% Tissue culture supernatant
Purity	Protein A purified
Clonality	Monoclonal
Clone number	EPR4491
Isotype	IgG

Applications

The Abpromise guarantee Our **Abpromise guarantee** covers the use of ab109179 in the following tested applications. The application notes include recommended starting dilutions; optimal dilutions/concentrations should be determined by the end user.

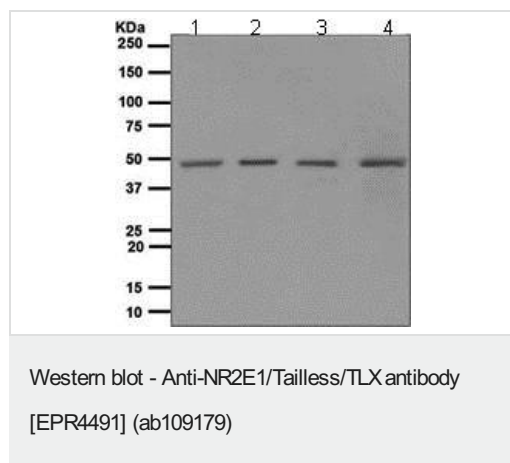
Application	Abreviews	Notes
WB		1/1000 - 1/10000. Predicted molecular weight: 43 kDa.

Application notes Is unsuitable for Flow Cyt, ICC/IF, IHC-P or IP.

Target

Function	Orphan receptor that binds DNA as a monomer to hormone response elements (HRE) containing an extended core motif half-site sequence 5'-AAGGTCA-3' in which the 5' flanking nucleotides participate in determining receptor specificity. May be required for brain development. May be involved in the regulation of retinal development.
Tissue specificity	Brain specific. Present in all brain sections tested, highest levels in the caudate nucleus and hippocampus, weakest levels in the thalamus.
Sequence similarities	Belongs to the nuclear hormone receptor family. NR2 subfamily. Contains 1 nuclear receptor DNA-binding domain.
Cellular localization	Nucleus.

Images



All lanes : Anti-NR2E1/Tailless/TLX antibody [EPR4491] (ab109179) at 1/1000 dilution

Lane 1 : Fetal brain lysate

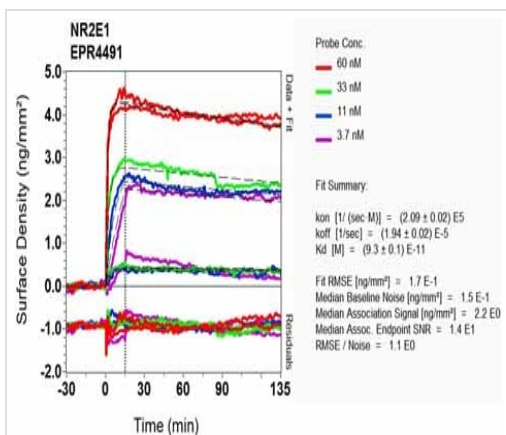
Lane 2 : Human hippocampus lysate

Lane 3 : SH-SY5Y lysate

Lane 4 : Jurkat lysate

Lysates/proteins at 10 µg per lane.

Predicted band size: 43 kDa



SPR Scanning - Anti-NR2E1/Tailless/TLX antibody
[EPR4491] (ab109179)

Equilibrium dissociation constant (K_D)

Learn more about K_D

[Click here to learn more about \$K_D\$](#)

Why choose a recombinant antibody?

Research with confidence
Consistent and reproducible results

Long-term and scalable supply
Recombinant technology

Success from the first experiment
Confirmed specificity

Ethical standards compliant
Animal-free production

Anti-NR2E1/Tailless/TLX antibody [EPR4491]
(ab109179)

Please note: All products are "FOR RESEARCH USE ONLY. NOT FOR USE IN DIAGNOSTIC PROCEDURES"

Our Abpromise to you: Quality guaranteed and expert technical support

- Replacement or refund for products not performing as stated on the datasheet
- Valid for 12 months from date of delivery
- Response to your inquiry within 24 hours
- We provide support in Chinese, English, French, German, Japanese and Spanish
- Extensive multi-media technical resources to help you
- We investigate all quality concerns to ensure our products perform to the highest standards

If the product does not perform as described on this datasheet, we will offer a refund or replacement. For full details of the Abpromise, please visit <https://www.abcam.com/abpromise> or contact our technical team.

Terms and conditions

- Guarantee only valid for products bought direct from Abcam or one of our authorized distributors