




Product datasheet

Anti-NS21 antibody ab235416

2 Images

Overview

Product name	Anti-NS21 antibody
Description	Rabbit polyclonal to NS21
Host species	Rabbit
Tested applications	Suitable for: IHC-P, WB
Species reactivity	Reacts with: Human Predicted to work with: Mouse, Rat, Cow, Orangutan 
Immunogen	Recombinant fragment corresponding to Human NS21 aa 400-700. Database link: Q7Z3E5  Run BLAST with  Run BLAST with
Positive control	WB: Jurkat, CEM and A549 whole cell lysates. IHC-P: Human tonsil tissue.
General notes	<p>The Life Science industry has been in the grips of a reproducibility crisis for a number of years. Abcam is leading the way in addressing this with our range of recombinant monoclonal antibodies and knockout edited cell lines for gold-standard validation. Please check that this product meets your needs before purchasing.</p> <p>If you have any questions, special requirements or concerns, please send us an inquiry and/or contact our Support team ahead of purchase. Recommended alternatives for this product can be found below, along with publications, customer reviews and Q&As</p>

Properties

Form	Liquid
Storage instructions	Shipped at 4°C. Store at +4°C short term (1-2 weeks). Upon delivery aliquot. Store at -20°C long term. Avoid freeze / thaw cycle.
Storage buffer	pH: 7.40 Preservative: 0.03% Proclin 300 Constituents: PBS, 50% Glycerol (glycerin, glycerine)
Purity	Protein G purified
Purification notes	Purity >95%.
Clonality	Polyclonal
Isotype	IgG

Applications

The Abpromise guarantee

Our **Abpromise guarantee** covers the use of ab235416 in the following tested applications.

The application notes include recommended starting dilutions; optimal dilutions/concentrations should be determined by the end user.

Application	Abreviews	Notes
IHC-P		1/20 - 1/200.
WB		1/500 - 1/2000. Predicted molecular weight: 92 kDa.

Target

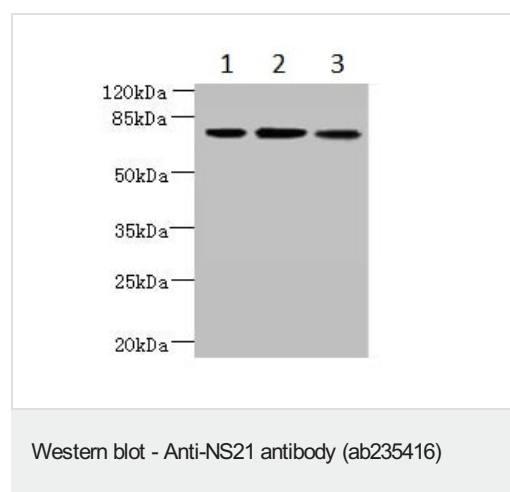
Tissue specificity

Strongly expressed in most melanomas and melanocytes. Weakly expressed in the testis.

Sequence similarities

Contains 1 LisH domain.

Images



All lanes : Anti-NS21 antibody (ab235416) at 1/500 dilution

Lane 1 : Jurkat (human T cell leukemia cell line from peripheral blood) whole cell lysate

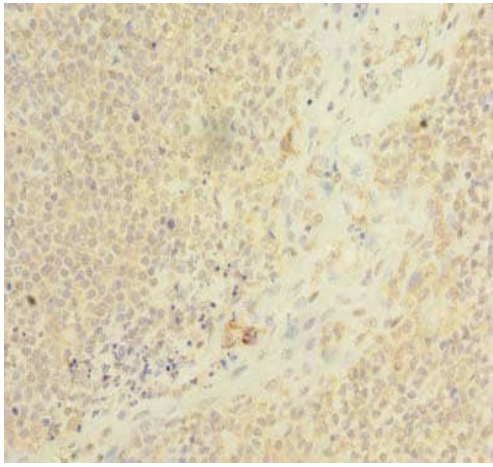
Lane 2 : CEM whole cell lysate

Lane 3 : A549 (human lung carcinoma cell line) whole cell lysate

Secondary

All lanes : Goat polyclonal to Rabbit IgG at 1/10000 dilution

Predicted band size: 92 kDa



Paraffin-embedded human tonsil tissue stained for NS21 using ab235416 at 1/100 dilution in immunohistochemical analysis.

Immunohistochemistry (Formalin/PFA-fixed paraffin-embedded sections) - Anti-NS21 antibody (ab235416)

Please note: All products are "FOR RESEARCH USE ONLY. NOT FOR USE IN DIAGNOSTIC PROCEDURES"

Our Abpromise to you: Quality guaranteed and expert technical support

- Replacement or refund for products not performing as stated on the datasheet
- Valid for 12 months from date of delivery
- Response to your inquiry within 24 hours
- We provide support in Chinese, English, French, German, Japanese and Spanish
- Extensive multi-media technical resources to help you
- We investigate all quality concerns to ensure our products perform to the highest standards

If the product does not perform as described on this datasheet, we will offer a refund or replacement. For full details of the Abpromise, please visit <https://www.abcam.com/abpromise> or contact our technical team.

Terms and conditions

- Guarantee only valid for products bought direct from Abcam or one of our authorized distributors