

Anti-NSE antibody ab134015

[2 Images](#)

Overview

Product name	Anti-NSE antibody
Description	Chicken polyclonal to NSE
Host species	Chicken
Tested applications	Suitable for: IHC-P, WB
Species reactivity	Reacts with: Mouse
Immunogen	Two synthetic peptides, conjugated to KLH, corresponding to different regions of the NSE gene product, but shared between the Human (NP_001966, NCBI) and Rat (AAA41119, NCBI) sequences.
General notes	<p>The Life Science industry has been in the grips of a reproducibility crisis for a number of years. Abcam is leading the way in addressing this with our range of recombinant monoclonal antibodies and knockout edited cell lines for gold-standard validation. Please check that this product meets your needs before purchasing.</p> <p>If you have any questions, special requirements or concerns, please send us an inquiry and/or contact our Support team ahead of purchase. Recommended alternatives for this product can be found below, along with publications, customer reviews and Q&As</p>

Properties

Form	Liquid
Storage instructions	Shipped at 4°C. Store at -20°C or -80°C. Avoid freeze / thaw cycle. Store undiluted.
Storage buffer	pH: 7 Preservative: 0.02% Sodium azide Constituent: 99% PBS
Purity	Immunogen affinity purified
Purification notes	Immune eggs were collected, and the IgY fractions were purified from the yolks. These IgY fractions were then affinity-purified using a peptide column, and the concentrations of the eluates adjusted to 200 µg/ml. Finally, equal volumes of each of the two affinity-purified anti-peptide antibodies were mixed, and the preparation was filter-sterilized.
Clonality	Polyclonal
Isotype	IgY

Applications

The Abpromise guarantee

Our **Abpromise guarantee** covers the use of ab134015 in the following tested applications.

The application notes include recommended starting dilutions; optimal dilutions/concentrations should be determined by the end user.

Application	Abreviews	Notes
IHC-P		1/2000 - 1/5000.
WB		1/5000 - 1/10000. Predicted molecular weight: 47 kDa.

Target

Function

Has neurotrophic and neuroprotective properties on a broad spectrum of central nervous system (CNS) neurons. Binds, in a calcium-dependent manner, to cultured neocortical neurons and promotes cell survival.

Tissue specificity

The alpha/alpha homodimer is expressed in embryo and in most adult tissues. The alpha/beta heterodimer and the beta/beta homodimer are found in striated muscle, and the alpha/gamma heterodimer and the gamma/gamma homodimer in neurons.

Pathway

Carbohydrate degradation; glycolysis; pyruvate from D-glyceraldehyde 3-phosphate: step 4/5.

Sequence similarities

Belongs to the enolase family.

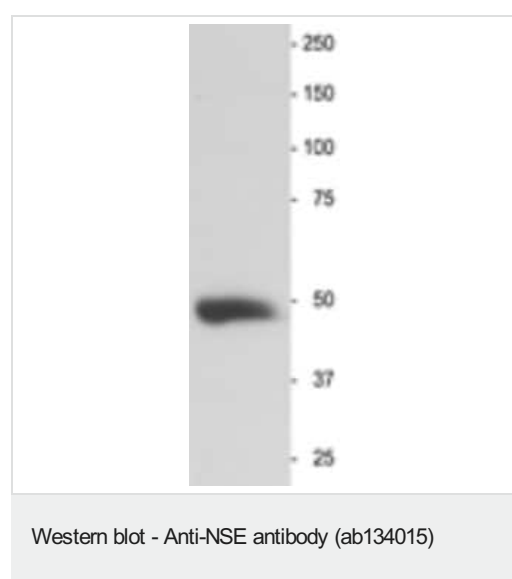
Developmental stage

During ontogenesis, there is a transition from the alpha/alpha homodimer to the alpha/beta heterodimer in striated muscle cells, and to the alpha/gamma heterodimer in nerve cells.

Cellular localization

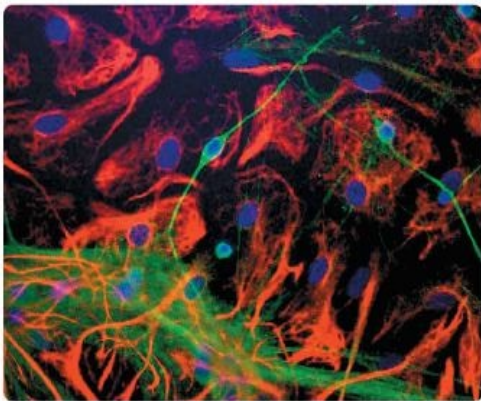
Cytoplasm. Cell membrane. Can translocate to the plasma membrane in either the homodimeric (alpha/alpha) or heterodimeric (alpha/gamma) form.

Images



Anti-NSE antibody (ab134015) at 1/5000 dilution + Adult mouse brain solubilized with Lamelli cracking buffer

Predicted band size: 47 kDa



Immunohistochemical analysis of dissociated cell cultures of neonatal mouse brains, labelling NSE-2 (green staining) in neurons using ab134015 at 1/2000 dilution. Cultures were counter-stained with a rabbit anti-GFAP to localize astrocytes, as well as with DAPI (blue staining) to localize nuclei.

Immunohistochemistry (Formalin/PFA-fixed paraffin-embedded sections) - Anti-NSE antibody (ab134015)

Please note: All products are "FOR RESEARCH USE ONLY. NOT FOR USE IN DIAGNOSTIC PROCEDURES"

Our Abpromise to you: Quality guaranteed and expert technical support

- Replacement or refund for products not performing as stated on the datasheet
- Valid for 12 months from date of delivery
- Response to your inquiry within 24 hours
- We provide support in Chinese, English, French, German, Japanese and Spanish
- Extensive multi-media technical resources to help you
- We investigate all quality concerns to ensure our products perform to the highest standards

If the product does not perform as described on this datasheet, we will offer a refund or replacement. For full details of the Abpromise, please visit <https://www.abcam.com/abpromise> or contact our technical team.

Terms and conditions

- Guarantee only valid for products bought direct from Abcam or one of our authorized distributors