

Product datasheet

Anti-NSMAF antibody ab81260

[1 References](#) [1 Image](#)

Overview

Product name	Anti-NSMAF antibody
Description	Rabbit polyclonal to NSMAF
Host species	Rabbit
Tested applications	Suitable for: WB
Species reactivity	Reacts with: Human
Immunogen	Synthetic peptide derived from human NSMAF protein.
Positive control	Human brain lysate, RMS-13 rhabdosarcoma cell lysate.
General notes	<p>The Life Science industry has been in the grips of a reproducibility crisis for a number of years. Abcam is leading the way in addressing this with our range of recombinant monoclonal antibodies and knockout edited cell lines for gold-standard validation. Please check that this product meets your needs before purchasing.</p> <p>If you have any questions, special requirements or concerns, please send us an inquiry and/or contact our Support team ahead of purchase. Recommended alternatives for this product can be found below, along with publications, customer reviews and Q&As</p>

Properties

Form	Liquid
Storage instructions	Shipped at 4°C. Upon delivery aliquot and store at -20°C or -80°C. Avoid repeated freeze / thaw cycles.
Storage buffer	Preservative: 0.08% Sodium azide Constituent: PBS
Purity	Ammonium Sulphate Precipitation
Clonality	Polyclonal
Isotype	IgG

Applications

The Abpromise guarantee Our **Abpromise guarantee** covers the use of ab81260 in the following tested applications. The application notes include recommended starting dilutions; optimal dilutions/concentrations should be determined by the end user.

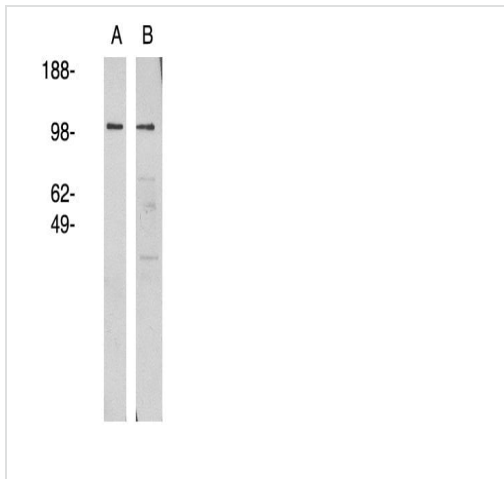
Application	Abreviews	Notes
WB		Use a concentration of 1 - 5 µg/ml. Predicted molecular weight: 104 kDa.

Target

Relevance

NSMAF is a novel adaptor protein which mediates the activation of sphingomyelinase by receptors such as tumor necrosis factor receptor type 1 and CD40 and subsequent apoptosis in cardiomyocytes. Inhibition of this factor may provide a novel intervention point for reducing ischemia/reperfusion injury.

Images



Western blot - Anti-NSMAF antibody (ab81260)

All lanes : Anti-NSMAF antibody (ab81260) at 1/400 dilution

Lane 1 : human

brain lysate

Lane 2 : RMS-13

rhabdosarcoma cell lysate

Lysates/proteins at 15 µg per lane.

Secondary

All lanes : mouse anti-rabbit HRP at 1/50000 dilution

Predicted band size: 104 kDa

Observed band size: 104 kDa

Exposure time: 5 minutes

Visualized using Pierce West Femto substrate system.

Please note: All products are "FOR RESEARCH USE ONLY. NOT FOR USE IN DIAGNOSTIC PROCEDURES"

Our Abpromise to you: Quality guaranteed and expert technical support

- Replacement or refund for products not performing as stated on the datasheet
- Valid for 12 months from date of delivery
- Response to your inquiry within 24 hours

- We provide support in Chinese, English, French, German, Japanese and Spanish
- Extensive multi-media technical resources to help you
- We investigate all quality concerns to ensure our products perform to the highest standards

If the product does not perform as described on this datasheet, we will offer a refund or replacement. For full details of the Abpromise, please visit <https://www.abcam.com/abpromise> or contact our technical team.

Terms and conditions

- Guarantee only valid for products bought direct from Abcam or one of our authorized distributors