




Product datasheet

Anti-Nucleoside-diphosphate kinase antibody ab225940

[1 References](#) [2 Images](#)

Overview

Product name	Anti-Nucleoside-diphosphate kinase antibody
Description	Rabbit polyclonal to Nucleoside-diphosphate kinase
Host species	Rabbit
Tested applications	Suitable for: IHC-P, WB
Species reactivity	Reacts with: Human Predicted to work with: Mouse, Rat, Cow, Pig 
Immunogen	Recombinant fragment corresponding to Human Nucleoside-diphosphate kinase aa 1 to the C-terminus. Database link: P30085-1  Run BLAST with  Run BLAST with
Positive control	WB: HEK-293T and HeLa whole cell lysates. IHC-P: Human colon cancer tissue.
General notes	<p>The Life Science industry has been in the grips of a reproducibility crisis for a number of years. Abcam is leading the way in addressing this with our range of recombinant monoclonal antibodies and knockout edited cell lines for gold-standard validation. Please check that this product meets your needs before purchasing.</p> <p>If you have any questions, special requirements or concerns, please send us an inquiry and/or contact our Support team ahead of purchase. Recommended alternatives for this product can be found below, along with publications, customer reviews and Q&As</p>

Properties

Form	Liquid
Storage instructions	Shipped at 4°C. Store at +4°C short term (1-2 weeks). Upon delivery aliquot. Store at -20°C long term. Avoid freeze / thaw cycle.
Storage buffer	pH: 7.30 Preservative: 0.02% Sodium azide Constituents: 50% Glycerol (glycerin, glycerine), PBS
Purity	Immunogen affinity purified
Clonality	Polyclonal

Isotype

IgG

Applications

The Abpromise guarantee

Our **Abpromise guarantee** covers the use of ab225940 in the following tested applications.

The application notes include recommended starting dilutions; optimal dilutions/concentrations should be determined by the end user.

Application	Abreviews	Notes
IHC-P		1/20 - 1/200.
WB		1/1000 - 1/5000. Predicted molecular weight: 22 kDa.

Target

Function

Catalyzes specific phosphoryl transfer from ATP to UMP and CMP.

Tissue specificity

Ubiquitously expressed.

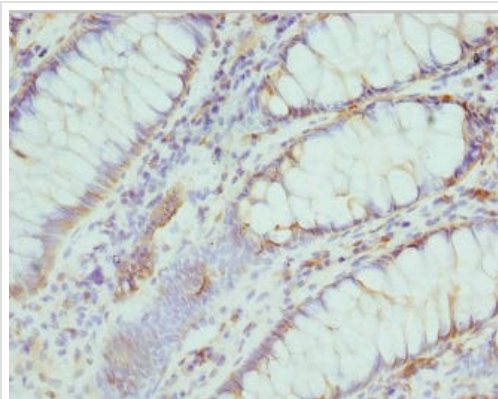
Sequence similarities

Belongs to the adenylate kinase family.

Cellular localization

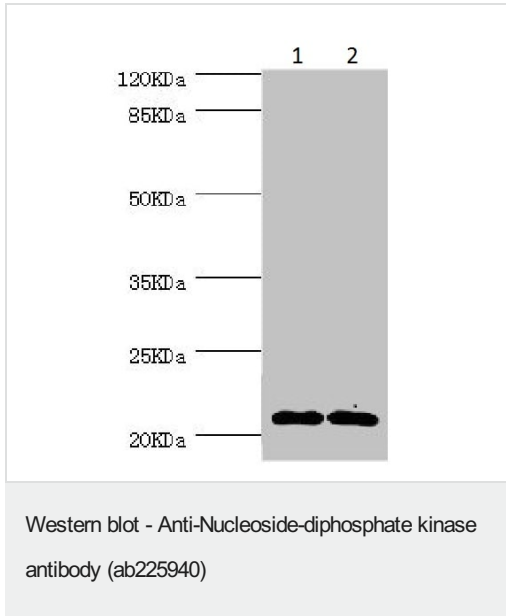
Nucleus. Cytoplasm. Mainly nuclear.

Images



Paraffin-embedded human colon cancer tissue stained for Nucleoside-diphosphate kinase using ab225940 at 1/100 dilution in immunohistochemical analysis.

Immunohistochemistry (Formalin/PFA-fixed paraffin-embedded sections) - Anti-Nucleoside-diphosphate kinase antibody (ab225940)



All lanes : Anti-Nucleoside-diphosphate kinase antibody (ab225940) at 1/1000 dilution

Lane 1 : HEK-293T (human epithelial cell line from embryonic kidney transformed with large T antigen) whole cell lysate

Lane 2 : HeLa (human epithelial cell line from cervix adenocarcinoma) whole cell lysate

Secondary

All lanes : Goat polyclonal to rabbit at 1/10000 dilution

Predicted band size: 22 kDa

Observed band size: 22 kDa

Please note: All products are "FOR RESEARCH USE ONLY. NOT FOR USE IN DIAGNOSTIC PROCEDURES"

Our Abpromise to you: Quality guaranteed and expert technical support

- Replacement or refund for products not performing as stated on the datasheet
- Valid for 12 months from date of delivery
- Response to your inquiry within 24 hours
- We provide support in Chinese, English, French, German, Japanese and Spanish
- Extensive multi-media technical resources to help you
- We investigate all quality concerns to ensure our products perform to the highest standards

If the product does not perform as described on this datasheet, we will offer a refund or replacement. For full details of the Abpromise, please visit <https://www.abcam.com/abpromise> or contact our technical team.

Terms and conditions

- Guarantee only valid for products bought direct from Abcam or one of our authorized distributors