




Product datasheet

Anti-Nuf2 antibody ab122962

★★★★★ [1 Abreviews](#) [8 References](#) [2 Images](#)

Overview

Product name	Anti-Nuf2 antibody
Description	Rabbit polyclonal to Nuf2
Host species	Rabbit
Tested applications	Suitable for: WB, ICC/IF
Species reactivity	Reacts with: Human Predicted to work with: Rhesus monkey, Gorilla 
Immunogen	Synthetic peptide: CGGDSYAKIDEKTAELKRKMFKMS , corresponding to C terminal amino acids 443-463 of Human Nuf2.  Run BLAST with  Run BLAST with
Positive control	HeLa cells and cell lysate.
General notes	<p>The Life Science industry has been in the grips of a reproducibility crisis for a number of years. Abcam is leading the way in addressing this with our range of recombinant monoclonal antibodies and knockout edited cell lines for gold-standard validation. Please check that this product meets your needs before purchasing.</p> <p>If you have any questions, special requirements or concerns, please send us an inquiry and/or contact our Support team ahead of purchase. Recommended alternatives for this product can be found below, along with publications, customer reviews and Q&As</p>

Properties

Form	Liquid
Storage instructions	Shipped at 4°C. Upon delivery aliquot and store at -20°C. Avoid freeze / thaw cycles.
Storage buffer	pH: 6 Preservative: 0.05% Sodium azide Constituent: 99% Whole serum
Purity	Whole antiserum
Clonality	Polyclonal
Isotype	IgG

Applications

The Abpromise guarantee

Our **Abpromise guarantee** covers the use of ab122962 in the following tested applications.

The application notes include recommended starting dilutions; optimal dilutions/concentrations should be determined by the end user.

Application	Abreviews	Notes
WB		1/500 - 1/5000. Detects a band of approximately 50 kDa (predicted molecular weight: 54 kDa).
ICC/IF	★★★★★ (1)	1/200 - 1/1000. Methanol fixation is recommended for immunofluorescence staining.

Target

Function

Acts as a component of the essential kinetochore-associated NDC80 complex, which is required for chromosome segregation and spindle checkpoint activity. Required for kinetochore integrity and the organization of stable microtubule binding sites in the outer plate of the kinetochore.

Sequence similarities

Belongs to the NUF2 family.

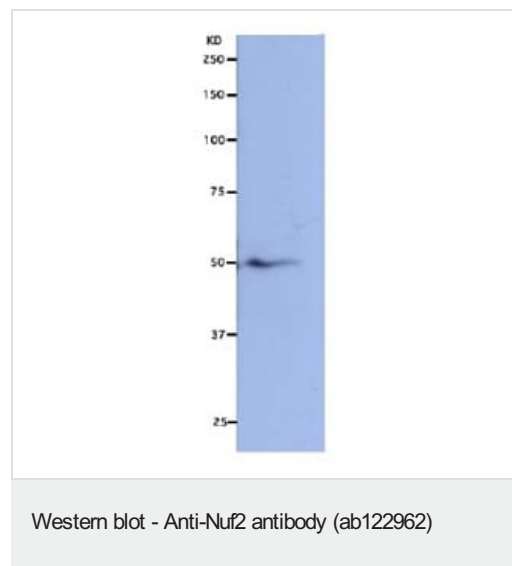
Post-translational modifications

Can be phosphorylated by AURKA and AURKB.

Cellular localization

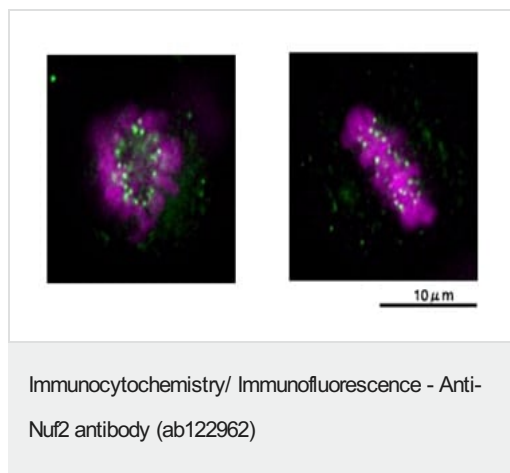
Nucleus. Chromosome > centromere > kinetochore. Localizes to kinetochores from late prophase to anaphase. Localizes specifically to the outer plate of the kinetochore.

Images



Anti-Nuf2 antibody (ab122962) at 1/5000 dilution + HeLa cell lysate

Predicted band size: 54 kDa



ab122962 at 1/500 dilution staining Nuf2 in Methanol-fixed HeLa cells by Immunofluorescence (green) showing localization to kinetochores at the stages of prometaphase to anaphase. Chromosomes were stained by DAPI (violet).

Please note: All products are "FOR RESEARCH USE ONLY. NOT FOR USE IN DIAGNOSTIC PROCEDURES"

Our Abpromise to you: Quality guaranteed and expert technical support

- Replacement or refund for products not performing as stated on the datasheet
- Valid for 12 months from date of delivery
- Response to your inquiry within 24 hours
- We provide support in Chinese, English, French, German, Japanese and Spanish
- Extensive multi-media technical resources to help you
- We investigate all quality concerns to ensure our products perform to the highest standards

If the product does not perform as described on this datasheet, we will offer a refund or replacement. For full details of the Abpromise, please visit <https://www.abcam.com/abpromise> or contact our technical team.

Terms and conditions

- Guarantee only valid for products bought direct from Abcam or one of our authorized distributors