

Product datasheet

Anti-NUFIP1 antibody [2662C1α] ab59770

1 Image

Overview

Product name	Anti-NUFIP1 antibody [2662C1α]
Description	Mouse monoclonal [2662C1α] to NUFIP1
Host species	Mouse
Tested applications	Suitable for: WB
Immunogen	Recombinant fragment (Human)
General notes	<p>The Life Science industry has been in the grips of a reproducibility crisis for a number of years. Abcam is leading the way in addressing this with our range of recombinant monoclonal antibodies and knockout edited cell lines for gold-standard validation. Please check that this product meets your needs before purchasing.</p> <p>If you have any questions, special requirements or concerns, please send us an inquiry and/or contact our Support team ahead of purchase. Recommended alternatives for this product can be found below, along with publications, customer reviews and Q&As</p>

Properties

Form	Liquid
Storage instructions	Shipped at 4°C. Store at +4°C short term (1-2 weeks). Upon delivery aliquot. Store at -20°C long term.
Storage buffer	<p>pH: 7.40</p> <p>Preservative: 0.05% Sodium azide</p> <p>Constituents: PBS, 1% BSA</p>
Purity	Protein G purified
Purification notes	Filtered through a 0.22 µm membrane.
Clonality	Monoclonal
Clone number	2662C1a
Isotype	IgG1

Applications

The Abpromise guarantee Our **Abpromise guarantee** covers the use of ab59770 in the following tested applications.

The application notes include recommended starting dilutions; optimal dilutions/concentrations should be determined by the end user.

Application	Abreviews	Notes
WB		

Application notes

Dot: Use at an assay dependent dilution.

WB: Use at an assay dependent dilution. Detects a band of approximately 40 kDa for the recombinant protein fragment (predicted molecular weight for the full length protein: 56 kDa).

Not yet tested in other applications.

Optimal dilutions/concentrations should be determined by the end user.

Target

Function

Binds RNA.

Tissue specificity

Expressed in spleen, thymus, prostate, testis, ovary, small intestine, colon, peripheral blood leukocyte, heart, brain, placenta, lung, liver, skeletal muscle, kidney, and pancreas.

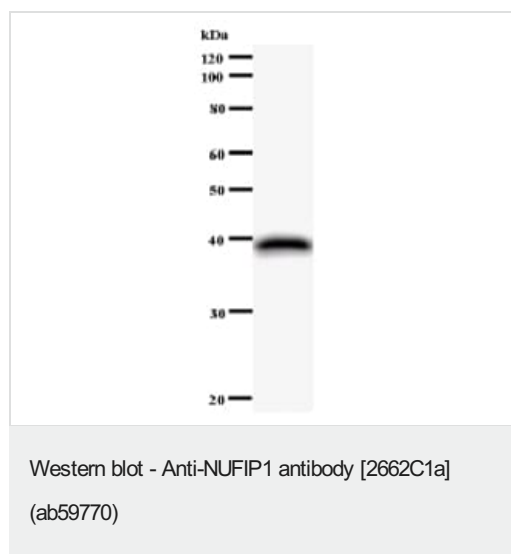
Sequence similarities

Contains 1 C2H2-type zinc finger.

Cellular localization

Nucleus. Distributed in the nucleus in a dot-like pattern.

Images



Anti-NUFIP1 antibody [2662C1a] (ab59770) + immunizing peptide

Predicted band size: 56 kDa

Observed band size: 40 kDa

Please note: All products are "FOR RESEARCH USE ONLY. NOT FOR USE IN DIAGNOSTIC PROCEDURES"

Our Abpromise to you: Quality guaranteed and expert technical support

- Replacement or refund for products not performing as stated on the datasheet
- Valid for 12 months from date of delivery
- Response to your inquiry within 24 hours

- We provide support in Chinese, English, French, German, Japanese and Spanish
- Extensive multi-media technical resources to help you
- We investigate all quality concerns to ensure our products perform to the highest standards

If the product does not perform as described on this datasheet, we will offer a refund or replacement. For full details of the Abpromise, please visit <https://www.abcam.com/abpromise> or contact our technical team.

Terms and conditions

- Guarantee only valid for products bought direct from Abcam or one of our authorized distributors