


Product datasheet

Anti-NuMA antibody ab84680

★★★★★ [1 Abreviews](#) [10 References](#) [5 Images](#)

Overview

Product name	Anti-NuMA antibody
Description	Rabbit polyclonal to NuMA
Host species	Rabbit
Tested applications	Suitable for: IHC-P
Species reactivity	Reacts with: Human, Common marmoset Predicted to work with: Chimpanzee, Gorilla 
Immunogen	Synthetic peptide corresponding to a region between residue 900 and 950 of Human NuMA (NP_006176.2).
Positive control	IHC-P: Human breast carcinoma, seminoma and ovarian tumor tissue. Common marmoset testis tissue.
General notes	Concentration is optimized for IHC and not determined The Life Science industry has been in the grips of a reproducibility crisis for a number of years. Abcam is leading the way in addressing this with our range of recombinant monoclonal antibodies and knockout edited cell lines for gold-standard validation. Please check that this product meets your needs before purchasing. If you have any questions, special requirements or concerns, please send us an inquiry and/or contact our Support team ahead of purchase. Recommended alternatives for this product can be found below, along with publications, customer reviews and Q&As

Properties

Form	Liquid
Storage instructions	Shipped at 4°C. Upon delivery aliquot and store at -20°C. Avoid freeze / thaw cycles.
Storage buffer	pH: 6.8 Preservative: 0.09% Sodium azide Constituents: 0.1% BSA, Tris buffered saline
Purity	Immunogen affinity purified
Clonality	Polyclonal
Isotype	IgG

Applications

The Abpromise guarantee

Our **Abpromise guarantee** covers the use of ab84680 in the following tested applications.

The application notes include recommended starting dilutions; optimal dilutions/concentrations should be determined by the end user.

Application	Abreviews	Notes
IHC-P	★★★★★ (1)	1/100 - 1/500.

Target

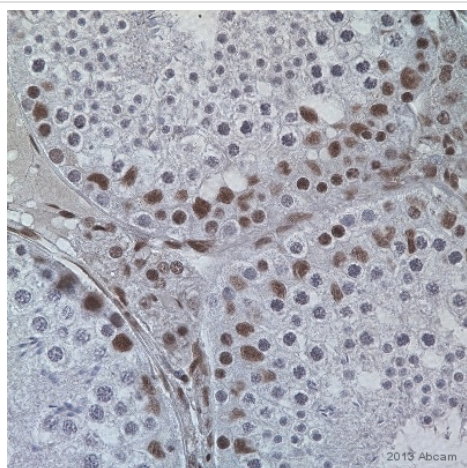
Function

May be a structural component of the nucleus.

Cellular localization

Nucleus. Chromosome. Dissociates from condensing chromosomes during early prophase, before the complete disintegration of the nuclear lamina. As mitosis progresses it reassociates with telophase chromosomes very early during nuclear reformation, before substantial accumulation of lamins on chromosomal surfaces is evident.

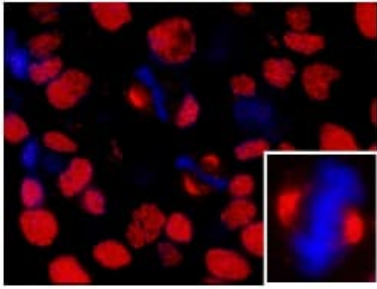
Images



ab84680 staining NuMA in Marmoset (common) testis tissue sections by Immunohistochemistry (IHC-P - paraformaldehyde-fixed, paraffin-embedded sections). Tissue was fixed with Bouin's fixative, permeabilized in Triton X-100 (1/100 in PBS) and blocked with 25% serum for 30 minutes; antigen retrieval was by heat mediation in a citrate buffer, pH 6.0. Samples were incubated with primary antibody (1/100 in PBS + 0.5% BSA) for 17 hours at 4°C. A Biotin-conjugated Chicken anti-rabbit IgG polyclonal (1/100) was used as the secondary antibody.

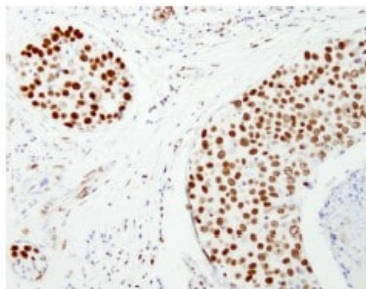
Immunohistochemistry (Formalin/PFA-fixed paraffin-embedded sections) - Anti-NuMA antibody (ab84680)

This image is courtesy of an anonymous Abreview



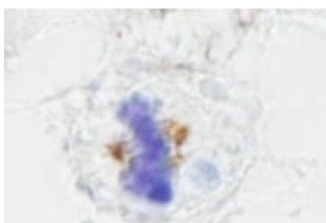
ab84680, at 1/100 dilution, staining NuMA in formalin-fixed, paraffin-embedded human breast carcinoma by Immunohistochemistry using a Red-fluorescent goat anti-rabbit IgG highly cross-adsorbed Hilyte Plus™ 555 secondary antibody at a dilution of 1/100.

Immunohistochemistry (Formalin/PFA-fixed paraffin-embedded sections) - Anti-NuMA antibody (ab84680)



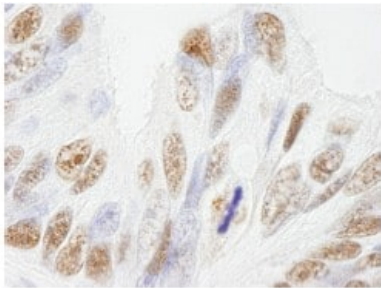
ab84680, at 1/250 dilution, staining NuMA in formalin-fixed, paraffin-embedded human breast carcinoma by Immunohistochemistry using DAB staining.

Immunohistochemistry (Formalin/PFA-fixed paraffin-embedded sections) - Anti-NuMA antibody (ab84680)



ab84680, at 1/250 dilution, staining NuMA in formalin-fixed, paraffin-embedded human seminoma by Immunohistochemistry using DAB staining.

Immunohistochemistry (Formalin/PFA-fixed paraffin-embedded sections) - Anti-NuMA antibody (ab84680)



ab84680, at 1/250 dilution, staining NuMA in formalin-fixed, paraffin-embedded human ovarian tumor by Immunohistochemistry using DAB staining.

Immunohistochemistry (Formalin/PFA-fixed paraffin-embedded sections) - Anti-NuMA antibody (ab84680)

Please note: All products are "FOR RESEARCH USE ONLY. NOT FOR USE IN DIAGNOSTIC PROCEDURES"

Our Abpromise to you: Quality guaranteed and expert technical support

- Replacement or refund for products not performing as stated on the datasheet
- Valid for 12 months from date of delivery
- Response to your inquiry within 24 hours
- We provide support in Chinese, English, French, German, Japanese and Spanish
- Extensive multi-media technical resources to help you
- We investigate all quality concerns to ensure our products perform to the highest standards

If the product does not perform as described on this datasheet, we will offer a refund or replacement. For full details of the Abpromise, please visit <https://www.abcam.com/abpromise> or contact our technical team.

Terms and conditions

- Guarantee only valid for products bought direct from Abcam or one of our authorized distributors