


Product datasheet

Anti-NUP214 antibody ab70497

★★★★☆ [4 Abreviews](#) [18 References](#) [4 Images](#)

Overview

Product name	Anti-NUP214 antibody
Description	Rabbit polyclonal to NUP214
Host species	Rabbit
Specificity	We have data to indicate that this antibody may not cross react with Mouse. However, this has not been conclusively tested and expression levels may vary in certain cell lines/tissues.
Tested applications	Suitable for: ICC, ICC/IF, IHC-P, WB, IP
Species reactivity	Reacts with: Mouse, Human Predicted to work with: Chimpanzee, Rhesus monkey, Gorilla, Orangutan 
Immunogen	Synthetic peptide corresponding to a region between residues 1250 and 1300 of human NUP214. (NP_005076.3)
Positive control	WB: HeLa and KEK293T lysate; IP: HeLa lysate; IHC: ovarian carcinoma tissue
General notes	<p>The Life Science industry has been in the grips of a reproducibility crisis for a number of years. Abcam is leading the way in addressing this with our range of recombinant monoclonal antibodies and knockout edited cell lines for gold-standard validation. Please check that this product meets your needs before purchasing.</p> <p>If you have any questions, special requirements or concerns, please send us an inquiry and/or contact our Support team ahead of purchase. Recommended alternatives for this product can be found below, along with publications, customer reviews and Q&As</p>

Properties

Form	Liquid
Storage instructions	Shipped at 4°C. Upon delivery aliquot and store at -20°C. Avoid freeze / thaw cycles.
Storage buffer	pH: 6.8 Preservative: 0.09% Sodium azide Constituents: 0.1% BSA, Tris buffered saline
Purity	Immunogen affinity purified
Clonality	Polyclonal
Isotype	IgG

Applications

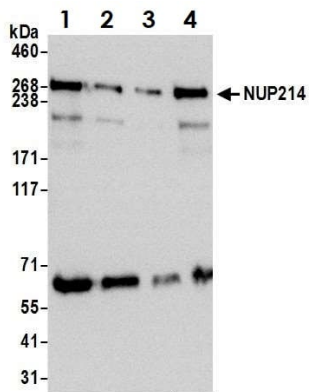
The Abpromise guarantee Our **Abpromise guarantee** covers the use of ab70497 in the following tested applications. The application notes include recommended starting dilutions; optimal dilutions/concentrations should be determined by the end user.

Application	Abreviews	Notes
ICC		Use at an assay dependent concentration.
ICC/IF	★★★★★ (1)	Use at an assay dependent concentration. PubMed: 19339552
IHC-P		1/100 - 1/500. Perform heat mediated antigen retrieval with citrate buffer pH 6 before commencing with IHC staining protocol.
WB	★★★★☆ (2)	1/2000 - 1/10000. Detects a band of approximately 280 kDa (predicted molecular weight: 214 kDa).
IP	★★★★☆ (1)	Use at 2-10 µg/mg of lysate.

Target

Function	May serve as a docking site in the receptor-mediated import of substrates across the nuclear pore complex.
Tissue specificity	Expressed in thymus, spleen, bone marrow, kidney, brain and testis, but hardly in all other tissues or in whole embryos during development.
Involvement in disease	Note=A chromosomal aberration involving NUP214 is found in a subset of acute myeloid leukemia (AML); also known as acute non-lymphocytic leukemia. Translocation t(6;9)(p23;q34) with DEK. It results in the formation of a DEK-CAN fusion gene. Note=A chromosomal aberration involving NUP214 is found in some cases of acute undifferentiated leukemia (AUL). Translocation t(6;9)(q21;q34.1) with SET.
Domain	Contains FG repeats.
Post-translational modifications	Probably glycosylated as it reacts with wheat germ agglutinin (WGA).
Cellular localization	Nucleus > nuclear pore complex. Cytoplasmic filaments.

Images



Western blot - Anti-NUP214 antibody (ab70497)

All lanes : Anti-NUP214 antibody (ab70497) at 0.1 µg/ml

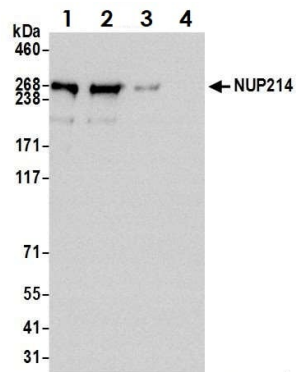
Lane 1 : HeLa whole cell lysate at 50 µg

Lane 2 : HeLa whole cell lysate at 15 µg

Lane 3 : HeLa whole cell lysate at 5 µg

Lane 4 : HEK293T whole cell lysate at 50 µg

Predicted band size: 214 kDa



Immunoprecipitation - Anti-NUP214 antibody (ab70497)

NUP214 was immunoprecipitated from HeLa whole cell lysate (0.1 mg per IP reaction, 20% loaded) with ab70497 at 6 µg per reaction. Western blot was performed on the immunoprecipitate using ab70497 at 0.04 µg/mL.

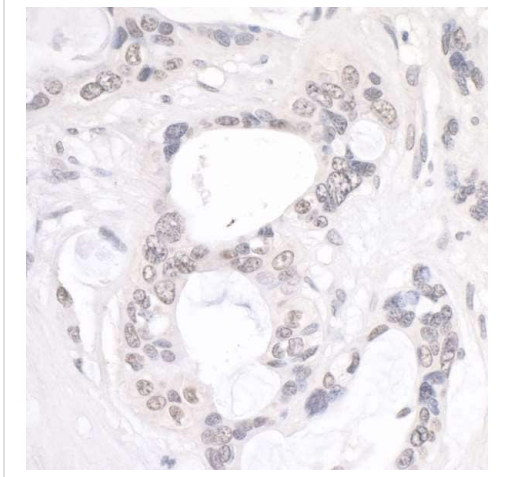
Lane 1: ab70497 IP in HeLa whole cell lysate.

Lane 2: ab70497 IP in HeLa whole cell lysate.

Lane 2: rabbit anti-NUP214 antibody IP in HeLa whole cell lysate.

Lane 4: Control IgG in HeLa whole cell lysate.

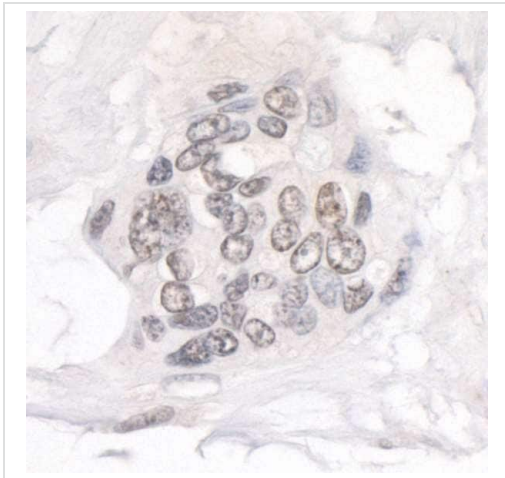
Detection: Chemiluminescence with an exposure time of 30 seconds.



Immunohistochemistry (Formalin/PFA-fixed paraffin-embedded sections) analysis of human ovarian carcinoma labeling NUP214 with ab70497 at 1/200 dilution.

Detection: DAB

Immunohistochemistry (Formalin/PFA-fixed paraffin-embedded sections) - Anti-NUP214 antibody (ab70497)



Immunohistochemistry (Formalin/PFA-fixed paraffin-embedded sections) analysis of human ovarian carcinoma labeling NUP214 with ab70497 at 1/200 dilution.

Detection: DAB

Immunohistochemistry (Formalin/PFA-fixed paraffin-embedded sections) - Anti-NUP214 antibody (ab70497)

Please note: All products are "FOR RESEARCH USE ONLY. NOT FOR USE IN DIAGNOSTIC PROCEDURES"

Our Abpromise to you: Quality guaranteed and expert technical support

- Replacement or refund for products not performing as stated on the datasheet
- Valid for 12 months from date of delivery

- Response to your inquiry within 24 hours
- We provide support in Chinese, English, French, German, Japanese and Spanish
- Extensive multi-media technical resources to help you
- We investigate all quality concerns to ensure our products perform to the highest standards

If the product does not perform as described on this datasheet, we will offer a refund or replacement. For full details of the Abpromise, please visit <https://www.abcam.com/abpromise> or contact our technical team.

Terms and conditions

- Guarantee only valid for products bought direct from Abcam or one of our authorized distributors