


# Anti-NUP50 antibody ab85915

[1 References](#) [3 Images](#)

### Overview

<b>Product name</b>	Anti-NUP50 antibody
<b>Description</b>	Rabbit polyclonal to NUP50
<b>Host species</b>	Rabbit
<b>Tested applications</b>	<b>Suitable for:</b> WB, IP, IHC-P
<b>Species reactivity</b>	<b>Reacts with:</b> Mouse, Human <b>Predicted to work with:</b> Cow, Chimpanzee, Rhesus monkey, Gorilla, Orangutan 
<b>Immunogen</b>	Synthetic peptide, corresponding to a region between residues 418 and 468 of Human NUP50 (NP_009103.2)
<b>Positive control</b>	HeLa whole cell lysate.
<b>General notes</b>	<p>The Life Science industry has been in the grips of a reproducibility crisis for a number of years. Abcam is leading the way in addressing this with our range of recombinant monoclonal antibodies and knockout edited cell lines for gold-standard validation. Please check that this product meets your needs before purchasing.</p> <p>If you have any questions, special requirements or concerns, please send us an inquiry and/or contact our Support team ahead of purchase. Recommended alternatives for this product can be found below, along with publications, customer reviews and Q&amp;As</p>

### Properties

<b>Form</b>	Liquid
<b>Storage instructions</b>	Shipped at 4°C. Upon delivery aliquot and store at -20°C. Avoid freeze / thaw cycles.
<b>Storage buffer</b>	pH: 6.8 Preservative: 0.09% Sodium azide Constituents: Tris buffered saline, 0.1% BSA
<b>Purity</b>	Immunogen affinity purified
<b>Purification notes</b>	ab85915 was affinity purified using an epitope specific to NUP50 immobilized on solid support.
<b>Clonality</b>	Polyclonal
<b>Isotype</b>	IgG

### Applications

## Applications

### The Abpromise guarantee

Our **Abpromise guarantee** covers the use of ab85915 in the following tested applications.

The application notes include recommended starting dilutions; optimal dilutions/concentrations should be determined by the end user.

Application	Abreviews	Notes
WB		1/2000 - 1/10000. Detects a band of approximately 50 kDa (predicted molecular weight: 50 kDa).
IP		Use at 2-5 µg/mg of lysate.
IHC-P		1/200 - 1/1000. Perform heat mediated antigen retrieval with citrate buffer pH 6 before commencing with IHC staining protocol.

## Target

### Function

Component of the nuclear pore complex that has a direct role in nuclear protein import. Actively displaces NLSs from importin-alpha, and facilitates disassembly of the importin-alpha:beta-cargo complex and importin recycling. Interacts with multiple transport receptor proteins including CDKN1B. This interaction is required for correct intracellular transport and degradation of CDKN1B.

### Tissue specificity

Ubiquitous. Highest levels in testis, peripheral blood leukocytes and fetal liver.

### Sequence similarities

Contains 1 RanBD1 domain.

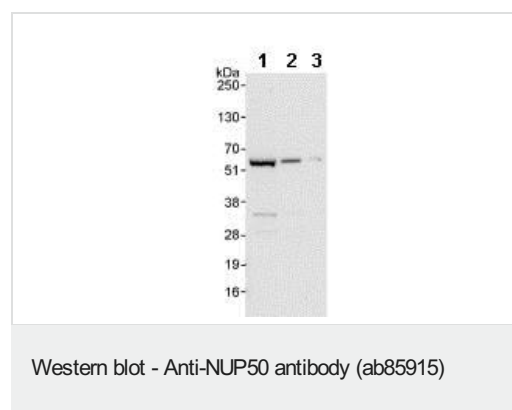
### Domain

Contains FG repeats.

### Cellular localization

Nucleus > nuclear pore complex. Nucleus membrane. Localizes to the nucleoplasmic fibrils of the nuclear pore complex.

## Images



**All lanes :** Anti-NUP50 antibody (ab85915) at 0.04 µg/ml

**Lane 1 :** HeLa whole cell lysate. at 50 µg

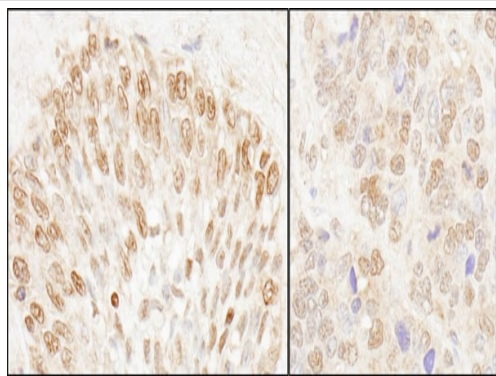
**Lane 2 :** HeLa whole cell lysate. at 15 µg

**Lane 3 :** HeLa whole cell lysate. at 5 µg

**Predicted band size:** 50 kDa

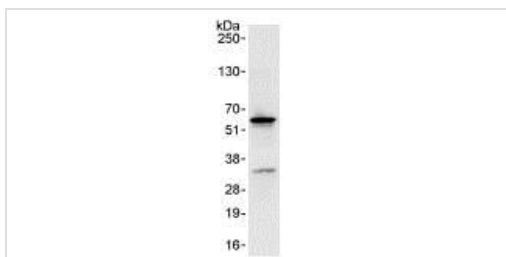
**Observed band size:** 50 kDa

**Exposure time:** 30 seconds



Immunohistochemistry (Formalin/PFA-fixed paraffin-embedded sections) - Anti-NUP50 antibody (ab85915)

Immunohistochemistry (Formalin/PFA-fixed paraffin-embedded sections) analysis of human prostate carcinoma (left) and mouse teratoma (right) tissues labelling NUP50 with ab85915 at 1/200 (1µg/ml). Detection: DAB.



Immunoprecipitation - Anti-NUP50 antibody (ab85915)

Detection of NUP50 by Western Blot of Immunoprecipitate. ab85915 at 1µg/ml staining NUP50 in HeLa whole cell lysate immunoprecipitated using ab85915 at 3µg/mg lysate (1 mg/IP; 20% of IP loaded/lane). Detection: Chemiluminescence with exposure time of 3 seconds.

**Please note:** All products are "FOR RESEARCH USE ONLY. NOT FOR USE IN DIAGNOSTIC PROCEDURES"

### Our Abpromise to you: Quality guaranteed and expert technical support

- Replacement or refund for products not performing as stated on the datasheet
- Valid for 12 months from date of delivery
- Response to your inquiry within 24 hours
- We provide support in Chinese, English, French, German, Japanese and Spanish
- Extensive multi-media technical resources to help you
- We investigate all quality concerns to ensure our products perform to the highest standards

If the product does not perform as described on this datasheet, we will offer a refund or replacement. For full details of the Abpromise, please visit <https://www.abcam.com/abpromise> or contact our technical team.

### Terms and conditions

- Guarantee only valid for products bought direct from Abcam or one of our authorized distributors