

Product datasheet

Anti-OBFC1 antibody ab89250

[5 References](#) [3 Images](#)

Overview

Product name	Anti-OBFC1 antibody
Description	Mouse polyclonal to OBFC1
Host species	Mouse
Tested applications	Suitable for: WB
Species reactivity	Reacts with: Human
Immunogen	Recombinant full length protein within Human OBFC1. The exact immunogen sequence used to generate this antibody is proprietary information. If additional detail on the immunogen is needed to determine the suitability of the antibody for your needs, please contact our Scientific Support team to discuss your requirements.
Positive control	Human spleen tissue lysate, HeLa cell lysate and OBFC1 transfected 293T cell lysate
General notes	<p>The Life Science industry has been in the grips of a reproducibility crisis for a number of years. Abcam is leading the way in addressing this with our range of recombinant monoclonal antibodies and knockout edited cell lines for gold-standard validation. Please check that this product meets your needs before purchasing.</p> <p>If you have any questions, special requirements or concerns, please send us an inquiry and/or contact our Support team ahead of purchase. Recommended alternatives for this product can be found below, along with publications, customer reviews and Q&As</p>

Properties

Form	Liquid
Storage instructions	Shipped at 4°C. Upon delivery aliquot and store at -20°C or -80°C. Avoid repeated freeze / thaw cycles.
Storage buffer	pH: 7.40 Constituent: 100% PBS
Purity	Protein A purified
Clonality	Polyclonal
Isotype	IgG

Applications

The Abpromise guarantee

Our **Abpromise guarantee** covers the use of ab89250 in the following tested applications.

The application notes include recommended starting dilutions; optimal dilutions/concentrations should be determined by the end user.

Application	Abreviews	Notes
WB		Use a concentration of 1 µg/ml. Predicted molecular weight: 42 kDa.

Target

Function

Component of the CST complex, a complex that binds to single-stranded DNA and is required to protect telomeres from DNA degradation. The CST complex binds single-stranded DNA with high affinity in a sequence-independent manner, while isolated subunits bind DNA with low affinity by themselves. In addition to telomere protection, the CST complex has probably a more general role in DNA metabolism at non-telomeric sites.

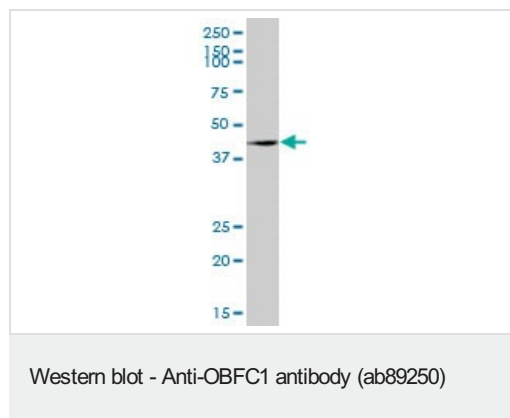
Sequence similarities

Belongs to the STN1 family.
Contains 1 OB DNA-binding domain.

Cellular localization

Nucleus. Chromosome > telomere.

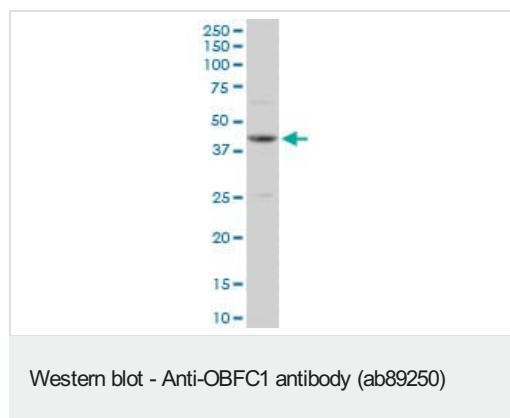
Images



Anti-OBFC1 antibody (ab89250) at 1 µg/ml + human spleen tissue lysate at 50 µg

Predicted band size: 42 kDa

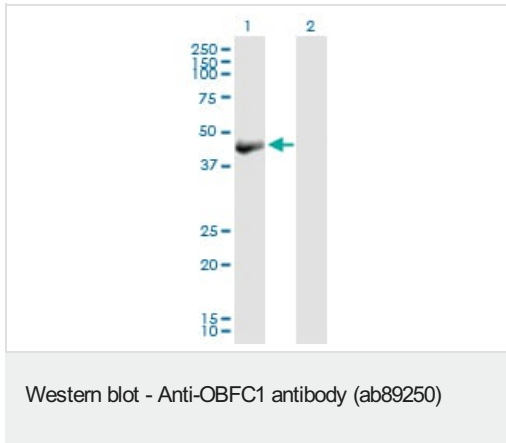
Observed band size: 42 kDa



Anti-OBFC1 antibody (ab89250) at 1 µg/ml + HeLa cell lysate at 50 µg

Predicted band size: 42 kDa

Observed band size: 42 kDa



All lanes : Anti-OBFC1 antibody (ab89250) at 1 µg/ml

Lane 1 : OBFC1 transfected 293T cell lysate

Lane 2 : Non transfected 293T cell lysate

Lysates/proteins at 25 µg per lane.

Predicted band size: 42 kDa

Observed band size: 42 kDa

Please note: All products are "FOR RESEARCH USE ONLY. NOT FOR USE IN DIAGNOSTIC PROCEDURES"

Our Abpromise to you: Quality guaranteed and expert technical support

- Replacement or refund for products not performing as stated on the datasheet
- Valid for 12 months from date of delivery
- Response to your inquiry within 24 hours
- We provide support in Chinese, English, French, German, Japanese and Spanish
- Extensive multi-media technical resources to help you
- We investigate all quality concerns to ensure our products perform to the highest standards

If the product does not perform as described on this datasheet, we will offer a refund or replacement. For full details of the Abpromise, please visit <https://www.abcam.com/abpromise> or contact our technical team.

Terms and conditions

- Guarantee only valid for products bought direct from Abcam or one of our authorized distributors