


Anti-Occludin antibody ab222691

★★★★★ [1 Abreviews](#) [15 References](#) [3 Images](#)

Overview

Product name	Anti-Occludin antibody
Description	Rabbit polyclonal to Occludin
Host species	Rabbit
Tested applications	Suitable for: Flow Cyt, WB
Species reactivity	Reacts with: Mouse, Human Predicted to work with: Rat, Pig 
Immunogen	Synthetic peptide within Mouse Occludin aa 480-520 conjugated to keyhole limpet haemocyanin. The exact sequence is proprietary. Database link: Q61146
Positive control	WB: A549 cell lysate and Mouse kidney lysates. Flow Cyt: 293T cells.
General notes	<p>The Life Science industry has been in the grips of a reproducibility crisis for a number of years. Abcam is leading the way in addressing this with our range of recombinant monoclonal antibodies and knockout edited cell lines for gold-standard validation. Please check that this product meets your needs before purchasing.</p> <p>If you have any questions, special requirements or concerns, please send us an inquiry and/or contact our Support team ahead of purchase. Recommended alternatives for this product can be found below, along with publications, customer reviews and Q&As</p>

Properties

Form	Liquid
Storage instructions	Shipped at 4°C. Store at +4°C short term (1-2 weeks). Upon delivery aliquot. Store at -20°C long term. Avoid freeze / thaw cycle.
Storage buffer	pH: 7.40 Preservative: 0.02% Proclin 300 Constituents: 50% Glycerol (glycerin, glycerine), 1% BSA, 48.98% TBS, 1X
Purity	Protein A purified
Clonality	Polyclonal
Isotype	IgG

Applications

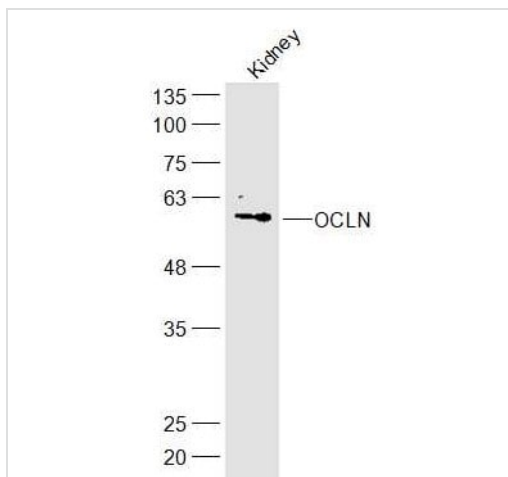
The Abpromise guarantee Our **Abpromise guarantee** covers the use of ab222691 in the following tested applications. The application notes include recommended starting dilutions; optimal dilutions/concentrations should be determined by the end user.

Application	Abreviews	Notes
Flow Cyt		1/100.
WB		1/100 - 1/1000. Predicted molecular weight: 59 kDa.

Target

Function	May play a role in the formation and regulation of the tight junction (TJ) paracellular permeability barrier. It is able to induce adhesion when expressed in cells lacking tight junctions.
Tissue specificity	Localized at tight junctions of both epithelial and endothelial cells. Highly expressed in kidney. Not detected in testis.
Involvement in disease	Defects in OCLN are the cause of band-like calcification with simplified gyration and polymicrogyria (BLCPMG) [MIM:251290]; also known as pseudo-TORCH syndrome. BLCPMG is a neurologic disorder with characteristic clinical and neuroradiologic features that mimic intrauterine TORCH infection in the absence of evidence of infection. Affected individuals have congenital microcephaly, intracranial calcifications, and severe developmental delay.
Sequence similarities	Belongs to the ELL/occludin family. Contains 1 MARVEL domain.
Domain	The C-terminal is cytoplasmic and is important for interaction with ZO-1. Sufficient for the tight junction localization. Involved in the regulation of the permeability barrier function of the tight junction (By similarity). The first extracellular loop participates in an adhesive interaction.
Post-translational modifications	Phosphorylated upon DNA damage, probably by ATM or ATR. Dephosphorylated by PTPRJ. The tyrosine phosphorylation on Tyr-398 and Tyr-402 reduces its ability to interact with TJP1.
Cellular localization	Membrane. Cell junction > tight junction.

Images



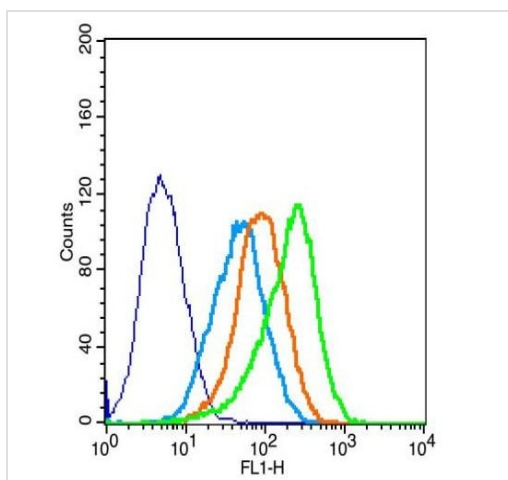
Western blot - Anti-Occludin antibody (ab222691)

Anti-Occludin antibody (ab222691) at 1/300 dilution + Mouse kidney tissue lysate

Secondary

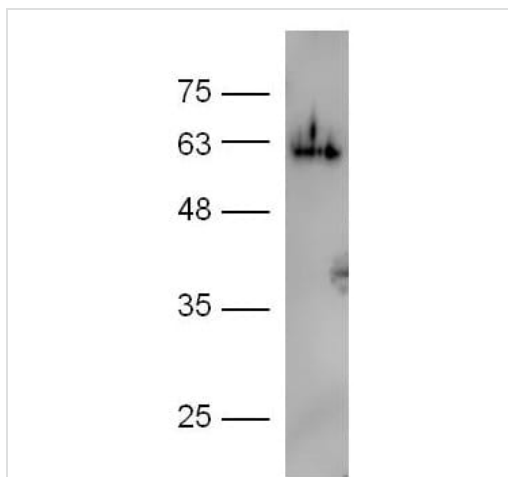
A conjugated secondary antibody at 1/5000 dilution

Predicted band size: 59 kDa



Flow Cytometry - Anti-Occludin antibody (ab222691)

Flow Cytometry analysis of 293T cells labelling Occludin with ab222691 at 1/100 for 30 minutes compared to control cells (dark blue), secondary only (light blue) and isotype control (orange)



Western blot - Anti-Occludin antibody (ab222691)

Anti-Occludin antibody (ab222691) at 1/300 dilution + A549 cell lysate

Secondary

Goat Anti-Goat Anti-Rabbit IgG Antibody (H+L), HRP Conjugated at 1/5000 dilution

Predicted band size: 59 kDa

Our Abpromise to you: Quality guaranteed and expert technical support

- Replacement or refund for products not performing as stated on the datasheet
- Valid for 12 months from date of delivery
- Response to your inquiry within 24 hours

- We provide support in Chinese, English, French, German, Japanese and Spanish
- Extensive multi-media technical resources to help you
- We investigate all quality concerns to ensure our products perform to the highest standards

If the product does not perform as described on this datasheet, we will offer a refund or replacement. For full details of the Abpromise, please visit <https://www.abcam.com/abpromise> or contact our technical team.

Terms and conditions

- Guarantee only valid for products bought direct from Abcam or one of our authorized distributors