



Anti-OFD1 antibody ab222837

[4 References](#) [4 Images](#)

Overview

Product name	Anti-OFD1 antibody
Description	Rabbit polyclonal to OFD1
Host species	Rabbit
Tested applications	Suitable for: IHC-P, ICC/IF, WB
Species reactivity	Reacts with: Human
Immunogen	Recombinant fragment corresponding to Human OFD1 aa 550-800. Database link: O75665
	 Run BLAST with  Run BLAST with
Positive control	WB: Hela whole cell lysate, SH-SY5Y whole cell lysate, K562 whole cell lysate. IHC-P: Human adrenal gland and skeletal muscle tissues. ICC/IF: HepG2 cells.
General notes	<p>The Life Science industry has been in the grips of a reproducibility crisis for a number of years. Abcam is leading the way in addressing this with our range of recombinant monoclonal antibodies and knockout edited cell lines for gold-standard validation. Please check that this product meets your needs before purchasing.</p> <p>If you have any questions, special requirements or concerns, please send us an inquiry and/or contact our Support team ahead of purchase. Recommended alternatives for this product can be found below, along with publications, customer reviews and Q&As</p>

Properties

Form	Liquid
Storage instructions	Shipped at 4°C. Store at +4°C short term (1-2 weeks). Upon delivery aliquot. Store at -20°C long term. Avoid freeze / thaw cycle.
Storage buffer	pH: 7.40 Preservative: 0.03% Proclin 300 Constituents: 50% Glycerol (glycerin, glycerine), PBS
Purity	Protein G purified
Purification notes	>95%
Clonality	Polyclonal
Isotype	IgG

Applications

The Abpromise guarantee

Our **Abpromise guarantee** covers the use of ab222837 in the following tested applications.

The application notes include recommended starting dilutions; optimal dilutions/concentrations should be determined by the end user.

Application	Abreviews	Notes
IHC-P		1/20 - 1/200.
ICC/IF		1/50 - 1/200.
WB		1/500 - 1/5000. Detects a band of approximately 117 kDa (predicted molecular weight: 43,112,117 kDa).

Target

Function

Component of the centrioles controlling mother and daughter centrioles length. Recruits to the centriole IFT88 and centriole distal appendage-specific proteins including CEP164. Involved in the biogenesis of the cilium, a centriole-associated function. The cilium is a cell surface projection found in many vertebrate cells required to transduce signals important for development and tissue homeostasis. Plays an important role in development by regulating Wnt signaling and the specification of the left-right axis. Only OFD1 localized at the centriolar satellites is removed by autophagy, which is an important step in the ciliogenesis regulation.

Tissue specificity

Widely expressed. Expressed in 9 and 14 weeks old embryos in metanephric mesenchyme, oral mucosa, lung, heart, nasal and cranial cartilage, and brain. Expressed in metanephros, brain, tongue, and limb.

Involvement in disease

Orofaciodigital syndrome 1
Simpson-Golabi-Behmel syndrome 2
Joubert syndrome 10
Retinitis pigmentosa 23

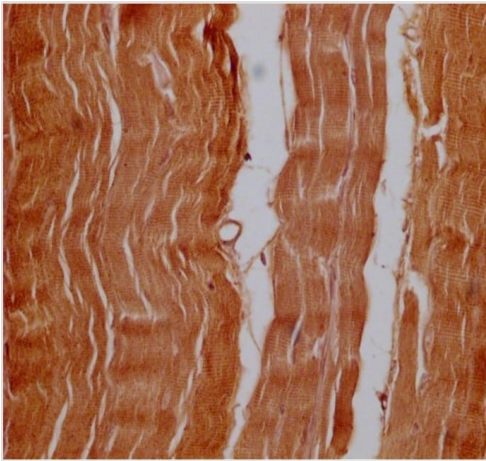
Sequence similarities

Belongs to the OFD1 family.
Contains 1 LisH domain.

Cellular localization

Cytoplasm, cytoskeleton, microtubule organizing center, centrosome, centriole. Cytoplasm, cytoskeleton, cilium basal body. Nucleus. Cytoplasm, cytoskeleton, microtubule organizing center, centrosome, centriolar satellite. Localizes to centriole distal ends and to centriolar satellites (PubMed:20230748, PubMed:24121310).

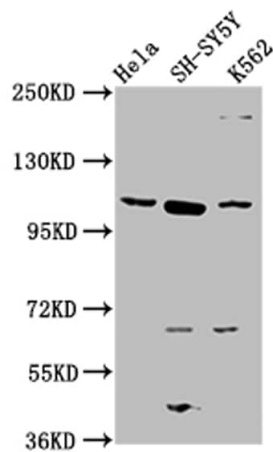
Images



Immunohistochemistry (Formalin/PFA-fixed paraffin-embedded sections) - Anti-OFD1 antibody (ab222837)

Immunohistochemical analysis of paraffin-embedded human skeletal muscle tissue labelling OFD1 with ab222837 at 1/100 dilution, followed by a Goat anti-Mouse IgG antibody labelled by HRP and visualised using 0.05% DAB.

Antigen retrieval was performed using high pressure in a citrate buffer, pH 6.0. Section was blocked with 10% normal goat serum for 30 minutes at 37°C, before being incubated with the primary antibody at 4°C overnight.



Western blot - Anti-OFD1 antibody (ab222837)

Lane 1: HeLa whole cell lysate.

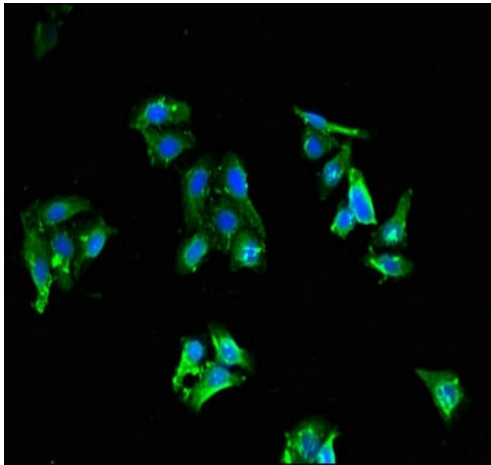
Lane 2: SH-SY5Y whole cell lysate.

Lane 3: K562 whole cell lysate.

All lanes: ab222837 antibody at 1:2000 dilution.

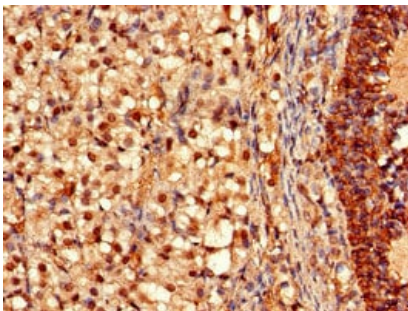
Secondary Goat polyclonal to rabbit IgG at 1/50000 dilution.

Predicted band size: 117, 43, 112 kDa Observed band size: 117 kDa.



Immunocytochemistry/ Immunofluorescence - Anti-OFD1 antibody (ab222837)

HepG2 (human liver hepatocellular carcinoma cell line) cells stained for OFD1 (green) using ab222837 at 1/100 dilution in ICC/IF. Alexa Fluor 488-conjugated Goat Anti-Rabbit IgG(H+L) was used as secondary antibody.



Immunohistochemistry (Formalin/PFA-fixed paraffin-embedded sections) - Anti-OFD1 antibody (ab222837)

Paraffin-embedded human adrenal gland tissue stained for OFD1 using ab222837 at 1/100 dilution in immunohistochemical analysis.

Please note: All products are "FOR RESEARCH USE ONLY. NOT FOR USE IN DIAGNOSTIC PROCEDURES"

Our Abpromise to you: Quality guaranteed and expert technical support

- Replacement or refund for products not performing as stated on the datasheet
- Valid for 12 months from date of delivery
- Response to your inquiry within 24 hours
- We provide support in Chinese, English, French, German, Japanese and Spanish
- Extensive multi-media technical resources to help you

- We investigate all quality concerns to ensure our products perform to the highest standards

If the product does not perform as described on this datasheet, we will offer a refund or replacement. For full details of the Abpromise, please visit <https://www.abcam.com/abpromise> or contact our technical team.

Terms and conditions

- Guarantee only valid for products bought direct from Abcam or one of our authorized distributors