


Product datasheet

Anti-OLFM4 antibody ab105861

★☆☆☆☆ [2 Abreviews](#) [1 References](#) [2 Images](#)

Overview

Product name	Anti-OLFM4 antibody
Description	Rabbit polyclonal to OLFM4
Host species	Rabbit
Tested applications	Suitable for: IHC-P, WB
Species reactivity	Reacts with: Human Predicted to work with: Mouse, Rat, Cow, Dog, Chimpanzee, Monkey 
Immunogen	Synthetic peptide corresponding to a region within internal sequence amino acids 400-450 (ASTGNMVISK LNDTTLQVLN TWYTKQYKPS ASNAFMVCGV LYATRTMNTR T) of Human OLFM4, conjugated to KLH. Run BLAST with ExPASy Run BLAST with NCBI
Positive control	Human liver lysate
General notes	<p>The Life Science industry has been in the grips of a reproducibility crisis for a number of years. Abcam is leading the way in addressing this with our range of recombinant monoclonal antibodies and knockout edited cell lines for gold-standard validation. Please check that this product meets your needs before purchasing.</p> <p>If you have any questions, special requirements or concerns, please send us an inquiry and/or contact our Support team ahead of purchase. Recommended alternatives for this product can be found below, along with publications, customer reviews and Q&As</p>

Properties

Form	Liquid
Storage instructions	Shipped at 4°C. Store at +4°C short term (1-2 weeks). Upon delivery aliquot. Store at -20°C long term.
Storage buffer	Preservative: 0.05% Sodium azide Constituents: 0.05% BSA, PBS
Purity	Immunogen affinity purified
Clonality	Polyclonal
Isotype	IgG

Applications

The Abpromise guarantee

Our **Abpromise guarantee** covers the use of ab105861 in the following tested applications.

The application notes include recommended starting dilutions; optimal dilutions/concentrations should be determined by the end user.

Application	Abreviews	Notes
IHC-P		Use a concentration of 5 µg/ml. Perform heat mediated antigen retrieval with citrate buffer pH 6 before commencing with IHC staining protocol.
WB		Use a concentration of 0.5 - 2 µg/ml. Predicted molecular weight: 57 kDa.

Target

Function

An antiapoptotic factor that promotes tumor growth. Promotes proliferation of pancreatic cancer cells by favoring the transition from the S to G2/M phase. Facilitates cell adhesion.

Tissue specificity

Expressed during myeloid lineage development. Strongly expressed in the prostate, small intestine and colon and moderately expressed in the bone marrow and stomach. Highly expressed in pancreatic cancer tissues and shows an elevated expression level during the early S phase of the cell cycle. Also expressed at high levels in stomach cancer and colon cancer tissues.

Sequence similarities

Contains 1 olfactomedin-like domain.

Domain

The olfactomedin-like domain is involved in the interaction with cadherin.

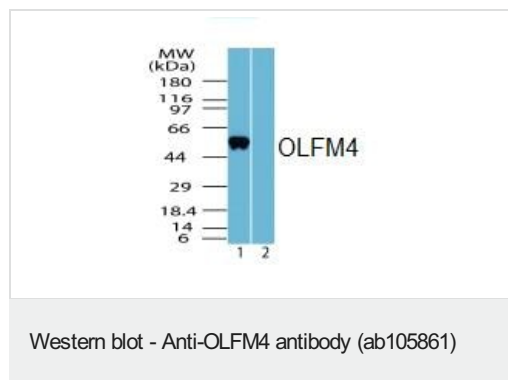
Post-translational modifications

N-glycosylated.

Cellular localization

Secreted > extracellular space. According to PubMed:15059901, found in mitochondrion and nucleus.

Images

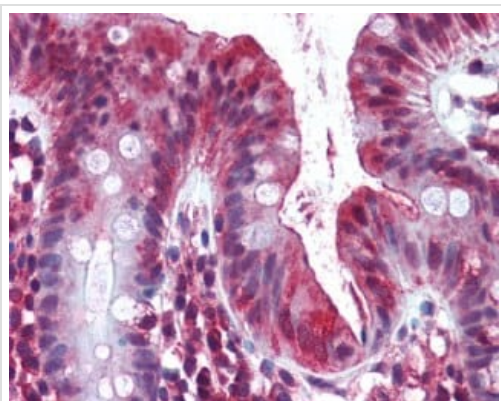


All lanes : Anti-OLF4 antibody (ab105861) at 2 µg/ml

Lane 1 : Human liver lysate with no immunizing peptide

Lane 2 : Human liver lysate with immunizing peptide

Predicted band size: 57 kDa



Immunohistochemistry (Formalin/PFA-fixed paraffin-embedded sections) - Anti-OLFM4 antibody (ab105861)

ab105861, at 5 µg/ml, staining OLFM4 in formalin fixed, paraffin embedded colon tissue by Immunohistochemistry. After incubation with the primary antibody, slides were incubated with biotinylated secondary antibody followed by alkaline phosphatase-streptavidin and chromogen.

Please note: All products are "FOR RESEARCH USE ONLY. NOT FOR USE IN DIAGNOSTIC PROCEDURES"

Our Abpromise to you: Quality guaranteed and expert technical support

- Replacement or refund for products not performing as stated on the datasheet
- Valid for 12 months from date of delivery
- Response to your inquiry within 24 hours
- We provide support in Chinese, English, French, German, Japanese and Spanish
- Extensive multi-media technical resources to help you
- We investigate all quality concerns to ensure our products perform to the highest standards

If the product does not perform as described on this datasheet, we will offer a refund or replacement. For full details of the Abpromise, please visit <https://www.abcam.com/abpromise> or contact our technical team.

Terms and conditions

- Guarantee only valid for products bought direct from Abcam or one of our authorized distributors