




## Product datasheet

# Anti-Oligodendrocyte myelin glycoprotein antibody ab224254

5 Images

### Overview

<b>Product name</b>	Anti-Oligodendrocyte myelin glycoprotein antibody
<b>Description</b>	Rabbit polyclonal to Oligodendrocyte myelin glycoprotein
<b>Host species</b>	Rabbit
<b>Tested applications</b>	<b>Suitable for:</b> WB, IHC-P
<b>Species reactivity</b>	<b>Reacts with:</b> Human <b>Predicted to work with:</b> Mouse 
<b>Immunogen</b>	Recombinant fragment corresponding to Human Oligodendrocyte myelin glycoprotein aa 1-200. Database link: <a href="#">P23515</a>  <a href="#">Run BLAST with</a>  <a href="#">Run BLAST with</a>
<b>Positive control</b>	IHC: Human cerebral cortex and caudate nucleus tissue. ICC: U-251 MG sp cells.
<b>General notes</b>	<p>The Life Science industry has been in the grips of a reproducibility crisis for a number of years. Abcam is leading the way in addressing this with our range of recombinant monoclonal antibodies and knockout edited cell lines for gold-standard validation. Please check that this product meets your needs before purchasing.</p> <p>If you have any questions, special requirements or concerns, please send us an inquiry and/or contact our Support team ahead of purchase. Recommended alternatives for this product can be found below, along with publications, customer reviews and Q&amp;As</p>

### Properties

<b>Form</b>	Liquid
<b>Storage instructions</b>	Shipped at 4°C. Store at +4°C short term (1-2 weeks). Upon delivery aliquot. Store at -20°C long term. Avoid freeze / thaw cycle.
<b>Storage buffer</b>	pH: 7.20 Preservative: 0.02% Sodium azide Constituents: 40% Glycerol (glycerin, glycerine), PBS
<b>Purity</b>	Immunogen affinity purified
<b>Clonality</b>	Polyclonal
<b>Isotype</b>	IgG

## Applications

### The Abpromise guarantee

Our **Abpromise guarantee** covers the use of ab224254 in the following tested applications.

The application notes include recommended starting dilutions; optimal dilutions/concentrations should be determined by the end user.

Application	Abreviews	Notes
WB		Use a concentration of 0.04 - 0.4 µg/ml. Predicted molecular weight: 50 kDa.
IHC-P		1/1000 - 1/2500. Perform heat mediated antigen retrieval with citrate buffer pH 6 before commencing with IHC staining protocol.

## Target

### Function

Cell adhesion molecule contributing to the interactive process required for myelination in the central nervous system.

### Tissue specificity

Oligodendrocytes and myelin of the central nervous system.

### Sequence similarities

Contains 8 LRR (leucine-rich) repeats.  
Contains 1 LRRNT domain.

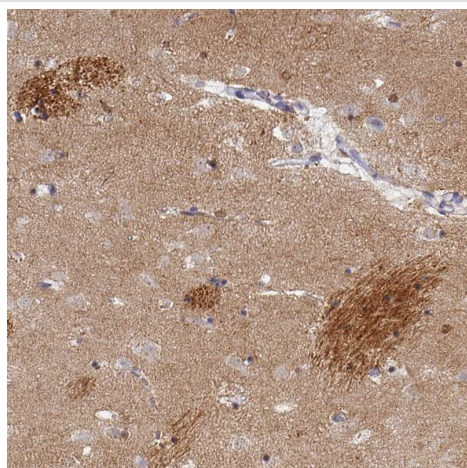
### Post-translational modifications

O-glycosylated in its Ser/Thr-rich repeat domain.

### Cellular localization

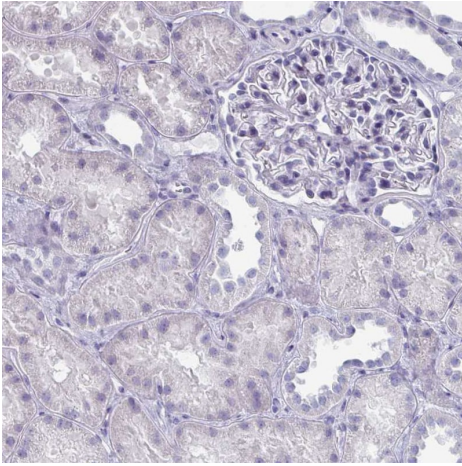
Cell membrane.

## Images



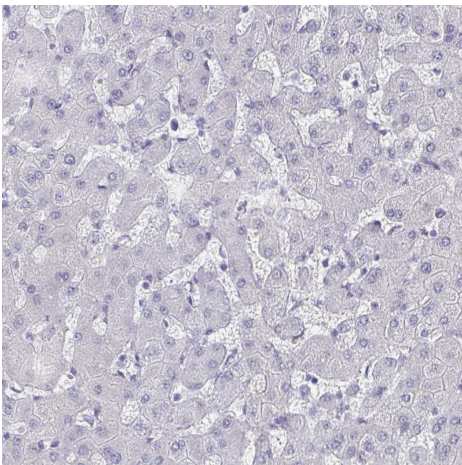
Paraffin-embedded human caudate nucleus stained for OMG using ab224254 at 1/1000 dilution in immunohistochemical analysis. Shows moderate to strong positivity in neuronal processes.

Immunohistochemistry (Formalin/PFA-fixed paraffin-embedded sections) - Anti-Oligodendrocyte myelin glycoprotein antibody (ab224254)



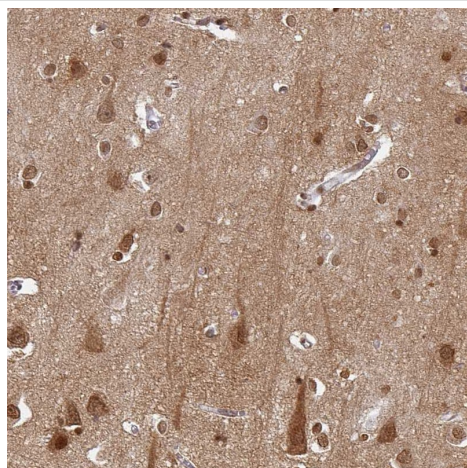
Paraffin-embedded human kidney stained for OMG using ab224254 at 1/1000 dilution in immunohistochemical analysis. Shows no positivity in cells in tubules as expected.

Immunohistochemistry (Formalin/PFA-fixed paraffin-embedded sections) - Anti-Oligodendrocyte myelin glycoprotein antibody (ab224254)



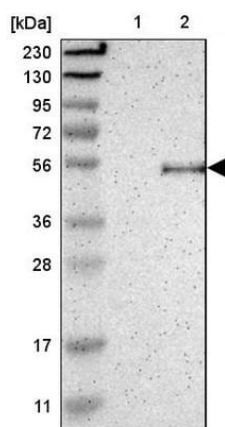
Paraffin-embedded human liver stained for OMG using ab224254 at 1/1000 dilution in immunohistochemical analysis. Shows no positivity in in hepatocytes as expected.

Immunohistochemistry (Formalin/PFA-fixed paraffin-embedded sections) - Anti-Oligodendrocyte myelin glycoprotein antibody (ab224254)



Immunohistochemistry (Formalin/PFA-fixed paraffin-embedded sections) - Anti-Oligodendrocyte myelin glycoprotein antibody (ab224254)

Paraffin-embedded human cerebral cortex stained for OMG using ab224254 at 1/1000 dilution in immunohistochemical analysis. Shows moderate positivity in neurophil, as well as glial cells.



Western blot - Anti-Oligodendrocyte myelin glycoprotein antibody (ab224254)

**All lanes :** Anti-Oligodendrocyte myelin glycoprotein antibody (ab224254) at 1/100 dilution

**Lane 1 :** RT4 (human urinary bladder cancer cell line) cell lysate

**Lane 2 :** U-251 MG sp (human brain glioma cell line) cell lysate

Developed using the ECL technique.

**Predicted band size:** 50 kDa

**Please note:** All products are "FOR RESEARCH USE ONLY. NOT FOR USE IN DIAGNOSTIC PROCEDURES"

### Our Abpromise to you: Quality guaranteed and expert technical support

- Replacement or refund for products not performing as stated on the datasheet
- Valid for 12 months from date of delivery
- Response to your inquiry within 24 hours
- We provide support in Chinese, English, French, German, Japanese and Spanish
- Extensive multi-media technical resources to help you
- We investigate all quality concerns to ensure our products perform to the highest standards

If the product does not perform as described on this datasheet, we will offer a refund or replacement. For full details of the Abpromise, please visit <https://www.abcam.com/abpromise> or contact our technical team.

## Terms and conditions

---

- Guarantee only valid for products bought direct from Abcam or one of our authorized distributors