


Product datasheet

Anti-OMD antibody ab154249

[1 References](#) [3 Images](#)

Overview

Product name	Anti-OMD antibody
Description	Rabbit polyclonal to OMD
Host species	Rabbit
Tested applications	Suitable for: WB, IHC-P
Species reactivity	Reacts with: Mouse, Human Predicted to work with: Rat, Cow 
Immunogen	Recombinant fragment, corresponding to a region within amino acids 174-402 of Human OMD.
Positive control	A549 and MCF-7 whole cell lysates; Human colon cancer tissue; Mouse muscle tissue.
General notes	<p>The Life Science industry has been in the grips of a reproducibility crisis for a number of years. Abcam is leading the way in addressing this with our range of recombinant monoclonal antibodies and knockout edited cell lines for gold-standard validation. Please check that this product meets your needs before purchasing.</p> <p>If you have any questions, special requirements or concerns, please send us an inquiry and/or contact our Support team ahead of purchase. Recommended alternatives for this product can be found below, along with publications, customer reviews and Q&As</p>

Properties

Form	Liquid
Storage instructions	Shipped at 4°C. Upon delivery aliquot. Store at -20°C or -80°C. Avoid freeze / thaw cycle.
Storage buffer	pH: 7.00 Preservative: 0.01% Thimerosal (merthiolate) Constituents: 78.99% PBS, 1% BSA, 20% Glycerol (glycerin, glycerine)
Purity	Immunogen affinity purified
Clonality	Polyclonal
Isotype	IgG

Applications

The Abpromise guarantee Our **Abpromise guarantee** covers the use of ab154249 in the following tested applications.

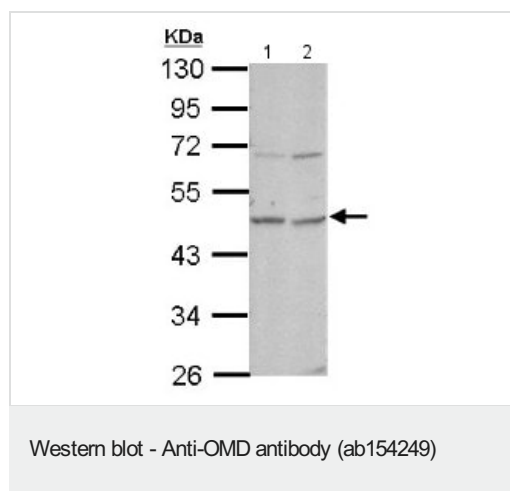
The application notes include recommended starting dilutions; optimal dilutions/concentrations should be determined by the end user.

Application	Abreviews	Notes
WB		1/500 - 1/3000. Predicted molecular weight: 49 kDa.
IHC-P		1/100 - 1/1000.

Target

Function	May be implicated in biomineralization processes. Has a function in binding of osteoblasts via the alpha(V)beta(3)-integrin.
Tissue specificity	Bone specific.
Sequence similarities	Belongs to the small leucine-rich proteoglycan (SLRP) family. SLRP class II subfamily. Contains 11 LRR (leucine-rich) repeats. Contains 1 LRRNT domain.
Post-translational modifications	Binds keratan sulfate chains.
Cellular localization	Secreted, extracellular space, extracellular matrix.

Images



All lanes : Anti-OMD antibody (ab154249) at 1/500 dilution

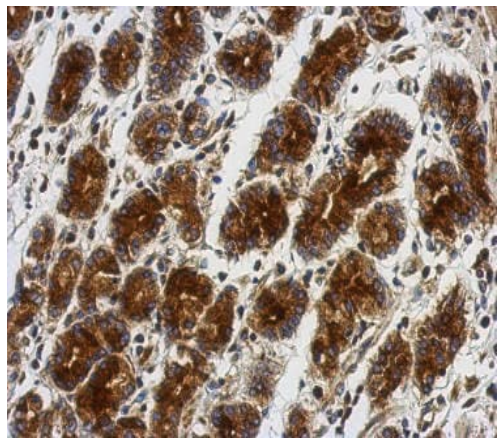
Lane 1 : A549 whole cell lysate

Lane 2 : MCF7 whole cell lysate

Lysates/proteins at 30 µg per lane.

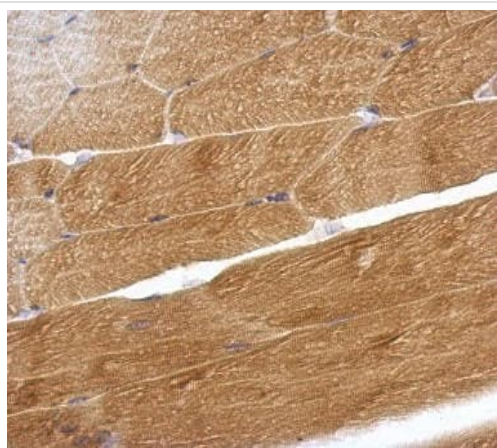
Predicted band size: 49 kDa

10% SDS PAGE



Immunohistochemical analysis of paraffin-embedded Human colon cancer tissue labeling OMD with ab154249 at 1/500 dilution.

Immunohistochemistry (Formalin/PFA-fixed paraffin-embedded sections) - Anti-OMD antibody (ab154249)



Immunohistochemical analysis of paraffin-embedded mouse muscle tissue labeling OMD with ab154249 at 1/500 dilution.

Immunohistochemistry (Formalin/PFA-fixed paraffin-embedded sections) - Anti-OMD antibody (ab154249)

Please note: All products are "FOR RESEARCH USE ONLY. NOT FOR USE IN DIAGNOSTIC PROCEDURES"

Our Abpromise to you: Quality guaranteed and expert technical support

- Replacement or refund for products not performing as stated on the datasheet
- Valid for 12 months from date of delivery
- Response to your inquiry within 24 hours

- We provide support in Chinese, English, French, German, Japanese and Spanish
- Extensive multi-media technical resources to help you
- We investigate all quality concerns to ensure our products perform to the highest standards

If the product does not perform as described on this datasheet, we will offer a refund or replacement. For full details of the Abpromise, please visit <https://www.abcam.com/abpromise> or contact our technical team.

Terms and conditions

- Guarantee only valid for products bought direct from Abcam or one of our authorized distributors