


Product datasheet

Anti-ORP8 antibody [mAbcam 60110] ab60110

★★★★★ [1 Abreviews](#) [3 Images](#)

Overview

| | |
|----------------------------|---|
| Product name | Anti-ORP8 antibody [mAbcam 60110] |
| Description | Mouse monoclonal [mAbcam 60110] to ORP8 |
| Host species | Mouse |
| Tested applications | Suitable for: Flow Cyt (Intra), WB |
| Species reactivity | Reacts with: Human Predicted to work with: Mouse, Horse, Dog, Chimpanzee  |
| Immunogen | Synthetic peptide corresponding to Human ORP8 aa 1-100 (N terminal) conjugated to keyhole limpet haemocyanin. (Peptide available as ab75267) |
| Positive control | This antibody gave a positive signal in human kidney tissue lysate and in the following whole cell lysates: HEK293; THP1. |
| General notes | <p>This antibody clone is manufactured by Abcam. If you require a custom buffer formulation or conjugation for your experiments, please contact orders@abcam.com.</p> <p>The Life Science industry has been in the grips of a reproducibility crisis for a number of years. Abcam is leading the way in addressing this with our range of recombinant monoclonal antibodies and knockout edited cell lines for gold-standard validation. Please check that this product meets your needs before purchasing.</p> <p>If you have any questions, special requirements or concerns, please send us an inquiry and/or contact our Support team ahead of purchase. Recommended alternatives for this product can be found below, along with publications, customer reviews and Q&As</p> |

Properties

| | |
|-----------------------------|---|
| Form | Liquid |
| Storage instructions | Shipped at 4°C. Upon delivery aliquot and store at -20°C or -80°C. Avoid repeated freeze / thaw cycles. |
| Storage buffer | pH: 7.40 Preservative: 0.02% Sodium azide Constituents: 1% BSA, 6.97% L-Arginine, PBS |
| Purity | Protein G purified |

| | |
|---------------------|--------------|
| Clonality | Monoclonal |
| Clone number | mAbcam 60110 |
| Myeloma | Sp2/0-Ag14 |
| Isotype | IgG1 |

Applications

The Abpromise guarantee Our **Abpromise guarantee** covers the use of ab60110 in the following tested applications.

The application notes include recommended starting dilutions; optimal dilutions/concentrations should be determined by the end user.

| Application | Abreviews | Notes |
|-------------------------|-----------|---|
| Flow Cyt (Intra) | | Use 1-2µg for 10 ⁶ cells. ab170190 - Mouse monoclonal IgG1, is suitable for use as an isotype control with this antibody. |
| WB | ★★★★★ (1) | Use a concentration of 5 µg/ml. Detects a band of approximately 101 kDa (predicted molecular weight: 101 kDa). We recommend using 3% milk as the blocking agent in Western Blot. |

Target

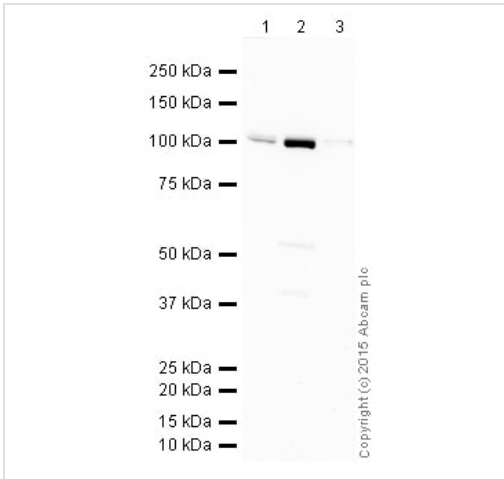
Relevance

ORP8 is a member of the oxysterol-binding protein related protein family. In humans, the gene family consists of 12 members, and extensive splice variation increases the number of encoded protein products substantially. The ORPs have been implicated as sterol sensors that regulate a number of cellular functions including sterol and neutral lipid metabolism, intracellular lipid transport, membrane trafficking and cell signaling. ORP8 has been recently shown to act as a sterol sensor that affects the reverse cholesterol transport process via modulation of ABCA1 expression and macrophage cholesterol efflux.

Cellular localization

Endoplasmic reticulum

Images



Western blot - Anti-ORP8 antibody [mAbcam 60110] (ab60110)

All lanes : Anti-ORP8 antibody [mAbcam 60110] (ab60110) at 5 $\mu\text{g/ml}$

Lane 1 : HEK293 (Human embryonic kidney cell line) Whole Cell Lysate

Lane 2 : THP1 (Human acute monocytic leukemia cell line) Whole Cell Lysate

Lane 3 : Human kidney tissue lysate - total protein (**ab30203**)

Lysates/proteins at 10 μg per lane.

Secondary

All lanes : Goat polyclonal to Mouse IgG - H&L - Pre-Adsorbed (HRP) at 1/10000 dilution

Developed using the ECL technique.

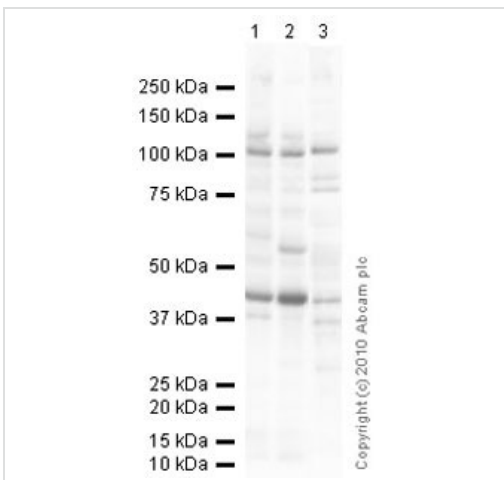
Performed under reducing conditions.

Predicted band size: 101 kDa

Observed band size: 101 kDa

Exposure time: 8 minutes

We recommend using 3% milk as the blocking agent in Western Blot.



Western blot - Anti-ORP8 antibody [mAbcam 60110] (ab60110)

All lanes : Anti-ORP8 antibody [mAbcam 60110] (ab60110) at 5 $\mu\text{g/ml}$

Lane 1 : HEK293 (Human embryonic kidney cell line) Whole Cell Lysate

Lane 2 : THP1 (Human acute monocytic leukemia cell line) Whole Cell Lysate

Lane 3 : Human kidney tissue lysate - total protein (**ab30203**)

Lysates/proteins at 10 μg per lane.

Secondary

All lanes : Goat polyclonal to Mouse IgG - H&L - Pre-Adsorbed (HRP) at 1/3000 dilution

Developed using the ECL technique.

Performed under reducing conditions.

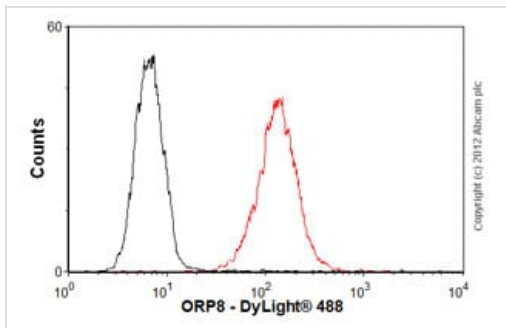
Predicted band size: 101 kDa

Observed band size: 101 kDa

Additional bands at: 44 kDa, 55 kDa, 80 kDa, 85 kDa. We are unsure as to the identity of these extra bands.

Exposure time: 30 seconds

1% BSA was used as a blocking agent.



Flow Cytometry (Intracellular) - Anti-ORP8 antibody
[mAbcam 60110] (ab60110)

Overlay histogram showing HEK293 cells stained with ab60110 (red line). The cells were fixed with 80% methanol (5 min) and then permeabilized with 0.1% PBS-Tween for 20 min. The cells were then incubated in 1x PBS / 10% normal goat serum / 0.3M glycine to block non-specific protein-protein interactions followed by the antibody (ab60110, 1 μ g/1x10⁶ cells) for 30 min at 22°C. The secondary antibody used was DyLight® 488 goat anti-mouse IgG (H+L) ([ab96879](#)) at 1/500 dilution for 30 min at 22°C. Isotype control antibody (black line) was mouse IgG1 [ICIGG1] ([ab91353](#), 2 μ g/1x10⁶ cells) used under the same conditions. Acquisition of >5,000 events was performed. This antibody gave a positive signal in HEK293 cells fixed with 4% paraformaldehyde (10 min)/permeabilized with 0.1% PBS-Tween for 20 min used under the same conditions.

Please note: All products are "FOR RESEARCH USE ONLY. NOT FOR USE IN DIAGNOSTIC PROCEDURES"

Our Abpromise to you: Quality guaranteed and expert technical support

- Replacement or refund for products not performing as stated on the datasheet
- Valid for 12 months from date of delivery
- Response to your inquiry within 24 hours
- We provide support in Chinese, English, French, German, Japanese and Spanish
- Extensive multi-media technical resources to help you
- We investigate all quality concerns to ensure our products perform to the highest standards

If the product does not perform as described on this datasheet, we will offer a refund or replacement. For full details of the Abpromise, please visit <https://www.abcam.com/abpromise> or contact our technical team.

Terms and conditions

- Guarantee only valid for products bought direct from Abcam or one of our authorized distributors