

Anti-OSGEPL1 antibody ab122125

3 Images

Overview

Product name	Anti-OSGEPL1 antibody
Description	Rabbit polyclonal to OSGEPL1
Host species	Rabbit
Tested applications	Suitable for: ICC, IHC-P, WB
Species reactivity	Reacts with: Human
Immunogen	Recombinant Protein Epitope Signature Tag, corresponding to amino acids 55 - 185 of Human OSGEPL1.
Positive control	IHC-P: Human kidney tissue; ICC: U-2 OS cells; WB: SK-MEL-30 whole cell lysate.
General notes	<p>The Life Science industry has been in the grips of a reproducibility crisis for a number of years. Abcam is leading the way in addressing this with our range of recombinant monoclonal antibodies and knockout edited cell lines for gold-standard validation. Please check that this product meets your needs before purchasing.</p> <p>If you have any questions, special requirements or concerns, please send us an inquiry and/or contact our Support team ahead of purchase. Recommended alternatives for this product can be found below, along with publications, customer reviews and Q&As</p>

Properties

Form	Liquid
Storage instructions	Shipped at 4°C. Upon delivery aliquot and store at -20°C. Avoid freeze / thaw cycles.
Storage buffer	<p>pH: 7.20</p> <p>Preservative: 0.02% Sodium azide</p> <p>Constituents: 40% Glycerol (glycerin, glycerine), 59% PBS</p>
Purity	Immunogen affinity purified
Clonality	Polyclonal
Isotype	IgG

Applications

The Abpromise guarantee Our **Abpromise guarantee** covers the use of ab122125 in the following tested applications.

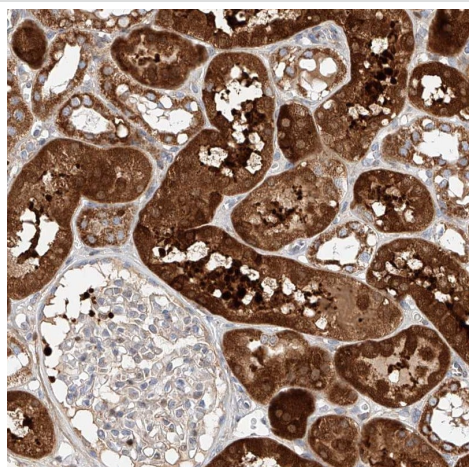
The application notes include recommended starting dilutions; optimal dilutions/concentrations should be determined by the end user.

Application	Abreviews	Notes
ICC		Use a concentration of 0.25 - 2 µg/ml.
IHC-P		1/20 - 1/50. Perform heat mediated antigen retrieval with citrate buffer pH 6 before commencing with IHC staining protocol.
WB		Use a concentration of 0.04 - 0.4 µg/ml.

Target

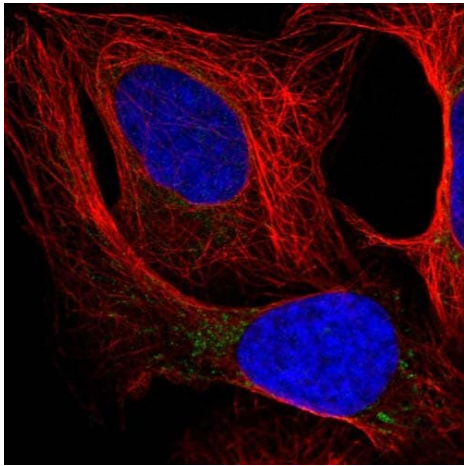
Function	Required for the formation of a threonylcarbamoyl group on adenosine at position 37 (t(6)A37) in tRNAs that read codons beginning with adenine.
Sequence similarities	Belongs to the KAE1 / YgjD family.

Images



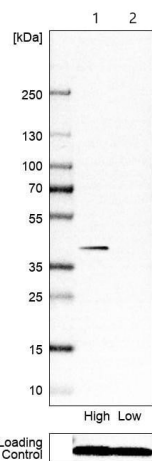
Immunohistochemistry (Formalin/PFA-fixed paraffin-embedded sections) analysis of human kidney tissue labelling OSGEPL1 with ab122125 at 1/20 dilution. Heat mediated antigen retrieval performed with citrate buffer pH 6 before commencing with IHC staining protocol.

Immunohistochemistry (Formalin/PFA-fixed paraffin-embedded sections) - Anti-OSGEPL1 antibody (ab122125)



Immunocytochemistry - Anti-OSGEPL1 antibody
(ab122125)

Immunofluorescent staining of Human cell line U-2 OS shows positivity in mitochondria. Recommended concentration of ab122125 1-4 µg/ml. Cells treated with PFA/Triton X-100.



Western blot - Anti-OSGEPL1 antibody (ab122125)

All lanes : Anti-OSGEPL1 antibody (ab122125) at 0.4 µg/ml

Lane 1 : SK-MEL-30 (human cutaneous melanoma cell line) whole cell lysate

Lane 2 : MCF7 (human breast adenocarcinoma cell line) whole cell lysate

Please note: All products are "FOR RESEARCH USE ONLY. NOT FOR USE IN DIAGNOSTIC PROCEDURES"

Our Abpromise to you: Quality guaranteed and expert technical support

- Replacement or refund for products not performing as stated on the datasheet

- Valid for 12 months from date of delivery
- Response to your inquiry within 24 hours
- We provide support in Chinese, English, French, German, Japanese and Spanish
- Extensive multi-media technical resources to help you
- We investigate all quality concerns to ensure our products perform to the highest standards

If the product does not perform as described on this datasheet, we will offer a refund or replacement. For full details of the Abpromise, please visit <https://www.abcam.com/abpromise> or contact our technical team.

Terms and conditions

- Guarantee only valid for products bought direct from Abcam or one of our authorized distributors