

## Product datasheet

### Anti-ospC antibody ab106083

1 Image

#### Overview

<b>Product name</b>	Anti-ospC antibody
<b>Description</b>	Rabbit polyclonal to ospC
<b>Host species</b>	Rabbit
<b>Specificity</b>	cross-reactivity with ospC from <i>Borrelia burgdorferi</i> , <i>afzelii</i> , and <i>valaisiana</i> sources based on 100% homology with the immunizing sequence. Partial reactivity is expected against <i>B. japonica</i> and <i>americana</i> sources based on 94% homology
<b>Tested applications</b>	<b>Suitable for:</b> WB
<b>Species reactivity</b>	<b>Reacts with:</b> <i>Borrelia burgdorferi</i>
<b>Immunogen</b>	Fusion protein corresponding to ospC. Database link: <a href="#">Q07337</a>
<b>Positive control</b>	<i>Borrelia burgdorferi</i> ospC protein.
<b>General notes</b>	<p>The Life Science industry has been in the grips of a reproducibility crisis for a number of years. Abcam is leading the way in addressing this with our range of recombinant monoclonal antibodies and knockout edited cell lines for gold-standard validation. Please check that this product meets your needs before purchasing.</p> <p>If you have any questions, special requirements or concerns, please send us an inquiry and/or contact our Support team ahead of purchase. Recommended alternatives for this product can be found below, along with publications, customer reviews and Q&amp;As</p>

#### Properties

<b>Form</b>	Liquid
<b>Storage instructions</b>	Shipped at 4°C. Upon delivery aliquot. Store at -20°C or -80°C. Avoid freeze / thaw cycle.
<b>Storage buffer</b>	Preservative: 0.01% Sodium azide Constituents: 0.42% Potassium phosphate, 0.88% Sodium chloride
<b>Purity</b>	Protein A purified
<b>Purification notes</b>	ab106083 is cross-adsorbed against MBP from monospecific antiserum by chromatography.
<b>Clonality</b>	Polyclonal
<b>Isotype</b>	IgG

## Applications

### The Abpromise guarantee

Our **Abpromise guarantee** covers the use of ab106083 in the following tested applications.

The application notes include recommended starting dilutions; optimal dilutions/concentrations should be determined by the end user.

Application	Abreviews	Notes
WB		1/1000. Predicted molecular weight: 22 kDa.

## Target

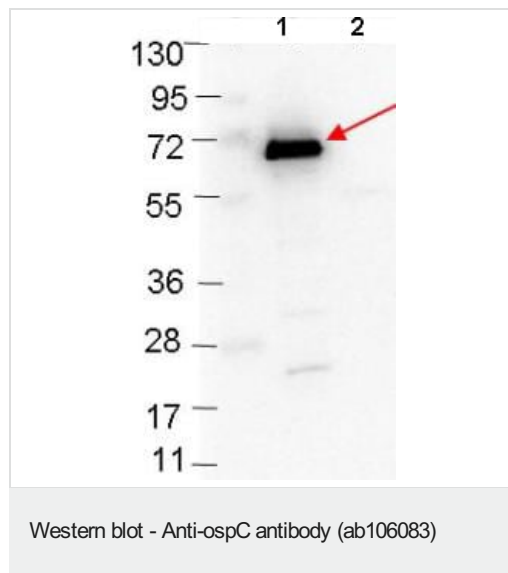
### Relevance

Outer Surface Protein C, or ospC, is a 20.7 kDa immunogenic protein on the outer surface of the spirochete *Borrelia burgdorferi*. Its function is not known, but it is located with lipid-anchoring sites on the outer cell membrane.

### Cellular localization

Cell outer membrane; Lipid-anchor.

## Images



**All lanes** : Anti-ospC antibody (ab106083) at 1/1000 dilution

**Lane 1** : MBP-ospC fusion protein

**Lane 2** : MBP alone

Lysates/proteins at 0.1 µg per lane.

### Secondary

**All lanes** : Goat-anti-Rabbit HRP at 1/40000 dilution

**Predicted band size:** 22 kDa

4-20% gel.

**Please note:** All products are "FOR RESEARCH USE ONLY. NOT FOR USE IN DIAGNOSTIC PROCEDURES"

## Our Abpromise to you: Quality guaranteed and expert technical support

- Replacement or refund for products not performing as stated on the datasheet
- Valid for 12 months from date of delivery
- Response to your inquiry within 24 hours
- We provide support in Chinese, English, French, German, Japanese and Spanish
- Extensive multi-media technical resources to help you

- We investigate all quality concerns to ensure our products perform to the highest standards

If the product does not perform as described on this datasheet, we will offer a refund or replacement. For full details of the Abpromise, please visit <https://www.abcam.com/abpromise> or contact our technical team.

#### **Terms and conditions**

---

- Guarantee only valid for products bought direct from Abcam or one of our authorized distributors